

This meeting will be held online. See Online Meeting Information section below for the meeting link. For more information, please see the last page of this notice.

DESIGN REVIEW - EARLY DESIGN GUIDANCE MEETING

Area: Downtown/Central **Address:** 2727 Boylston AVE E
Project: 3039736-EG **Zone:** MR (M1)
Applicant Contact: Scot Carr – (206) 218-8708
SDCI Planner: David Landry - (206) 684-5318

PROJECT DESCRIPTION

Design Review Early Design Guidance for an 8-story, 83-unit apartment building. Parking for 41 vehicles proposed. This project is participating in the Living Building Pilot Program.

ONLINE MEETING INFORMATION

Date: Wednesday, October 19, 2022 **Time:** 5:00 PM
Online Access: **Webex Meeting Link:** <https://bit.ly/Mtg3039736>
Listen Line: 206-207-1700 Meeting Access Code: 2481 152 5364
Public Comment Link: <https://bit.ly/Comment3039736>

Need assistance? View the virtual meeting at Seattle Municipal Tower, 700 5th Ave. All meeting facilities are ADA compliant. Translators/interpreters provided upon request. Contact the Public Resource Center at www.seattle.gov/project/comment or (206) 684-8467 at least five business days prior to the meeting to request this service.

OPPORTUNITY FOR COMMENT

During the early design guidance (EDG) phase of review, SDCI accepts written comments through **October 18, 2022** on the site planning and design issues of this project. Submit all comments and requests to be made party of record to www.seattle.gov/project/comment or City of Seattle – SDCI – PRC, 700 5th Avenue, Suite 2000, PO Box 34019, Seattle, WA 98124-4019.

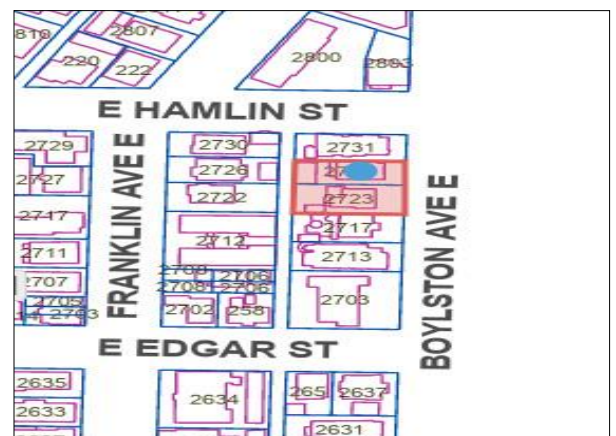
PROCESS

A Design Review application for future development of this site has been submitted to the Seattle Department of Construction and Inspections (SDCI). The first phase of Design Review includes the (EDG) meeting. The following occurs at the meeting:

1. Presentation by the applicant about the site, vicinity and early massing design concepts.
2. Comments by the public regarding the design of the new development.*
3. Deliberation by the Design Review Board providing design guidance and identifying significant Design Guidelines applicable to the design as it moves forward towards Master Use Permit (MUP) application.

***Please note that public comment at this meeting is limited to design considerations.** (If environmental review is triggered, comments related to environmental impacts, such as traffic, parking, noise, etc. may be sent to SDCI following notice of that review.)

MORE INFORMATION: For more information regarding this application or the Design Review process, please visit the Design Review Program website at [Design Review](http://www.seattle.gov/design-review), contact the Land Use Planner listed above, or the Public Resource Center at www.seattle.gov/sdci/questions.



The top of this image is north.
This map is for illustrative purposes only. In the event of omissions, errors or differences, the documents in Seattle DCI's files will control.

