

December 2000/January 2001

Serving the Eastlake Community

EASTLAKE

N E W S

Season's Greetings



**Visit our
web site**

<http://eastlake.oo.net>

Special thanks to
Daniel Solomons,
owner of oo.net for
graciously hosting
our site.

Next Main Public Meeting

Wednesday, January 17, 2001

TOPICS: 7 p.m. ECC reports 7:20 UW Master Plan 8:00 TransLake WA study

LOCATION: Library at TOPS Seward School, 2500 Franklin Ave. E.

ECC General Meeting to look at SR520 and UW Expansion Plans

The Eastlake Community Council invites you to a public meeting Wednesday, January 17, 2001 at the TOPS Seward School library to look at proposals to expand the University of Washington and State Route 520. The meeting begins at 7 PM with brief reports on neighborhood issues. Then at 7:20 we will hear about the UW master plan to add thousands of students and staff - see related story. At 8:00 PM we will hear a presentation from the Washington State Department of Transportation's consultants regarding SR520. Current proposals range from just replacing the existing bridge (plus safety improvements), to a six-lane, 250-foot wide bridge including HOV lanes. The related designs at I-5 have not been presented, so the impact on our neighborhood can only be imagined. However, in past years, WSDOT has examined a possible flyover ramp between SR520 and I-5 that could increase noise and even take some of Boylston Street; and a tunnel from the SR520 bridge whose noisy portal would be near the corner of Eastlake and Fairview avenues, displacing existing homes and businesses and a park and bringing a lot more traffic to the neighborhood. For more information, contact ECC board and TransLake advisory committee member Jim Reckers 323-8537, jhrecker@home.com.

Eastlakers encouraged to comment on UW plan

The January 17 ECC general meeting at TOPS Seward School will include a 7:30 p.m. discussion of the University of Washington's draft master plan. Under an agreement with the City, every ten years UW submits a physical development plan for City approval. Now out for public comment, the draft master plan and environmental impact statement (EIS) pose important issues for Eastlake. A possible positive is UW's proposal to connect the east-west Campus Parkway with a stop light to 11th Avenue NE. (just north of the University Bridge), replacing with a simple turn north or south the merge ramps now entering and leaving the bridge that are such a danger to bicyclists and pedestrians.

-Continued on Page Four

Eastlake News
is a bi-monthly
publication of
the Eastlake
Community
Council, to
inform the
community of
issues concerning
the Eastlake area

**Eastlake Community
Council
Board Members**

Owen Reese
President

Barb Deutsch
Vice President

Chris Leman
Secretary

Mary Lou Pederson
Treasurer

Anthony Vincent
Advertising

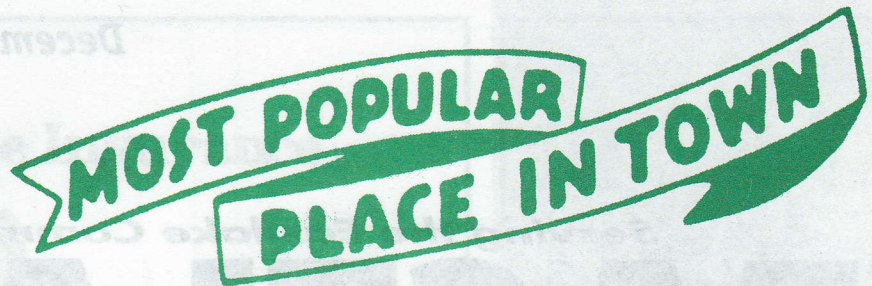
Connie Lind
Volunteer Coordinator

Jim Reckers

Send stories, letters
and ideas to the
**Eastlake News 117 E.
Louisa St. #1, Seattle
WA 98102**

Display Advertising?
Call Anthony
328 5409

Anthony Vincent
Desktop Publishing
Layout Production



Business Notes

The New Times, "your monthly resource for authentic living," has expanded greatly to a circulation of 25,000 in four years under owner and publisher Deverick Martin (320-7788). Available free at 500 northwest locations (including Pazzo's, 2307 Eastlake Ave.), the Eastlake-based newspaper also has paid subscribers throughout North America. Its extensive web site, www.newtimes.org, offers articles, and reviews, events listings, speaker and location ideas for events, writers' guidelines, links, and the monthly's advertising rates and subscription form...Another distinguished local publishing effort is by **Joanne Bailey** and **Carl Nyberg** who, from their home on Portage Bay Place E. write, publish, and market best-selling boating guides. Delightfully written from firsthand experience, and beautifully illustrated, the books are fascinating for boaters and landlubbers alike. A unique panorama of boating in our area--where to go, what to see, where to have fun, what history and explorers went before, what moorages, facilities and services are available, and cruising ideas and tips for everything from the smallest kayak to larger sail or power boats. **Gunkholing in South Puget Sound** (1997) & **Gunkholing in the San Juan Islands** (2000) can be ordered at 323-1315 or gunkholing@earthlink.net...A recent Seattle Times review says the new **Motion Lounge** (2245 Eastlake Ave., 860-0284) has "a swankier decor and a dinner menu that specializes in casual bar food but also includes lovely fresh salads, pasta, pan-seared salmon and a 9-ounce ribeye steak. It's questionable, however, whether the hip, young crowd that hangs there has noticed these changes yet, or even cares." ...**Ross Laboratories** (3138 Fairview Ave. E., 324-3950) recently delivered

to the St. Paul district of the Army Corps of Engineers a 24-foot survey vessel for use on the upper Mississippi River. The funky-looking vessel sports ten-foot arms that extend over the water, allowing it to map a 30-foot path...In August, longtime Eastlake hair designer Annie Rambaud opened **Annie's Hair Shop** at 2608 Eastlake Avenue (720-4558). Hours are Wed.-Fri. 10-7, Sat. 10-5..Congratulations to **Zymogenetics** (1201 Eastlake, 442-6600), which again is a locally controlled company with a recent decision by Novo Nordisk, its Danish parent (which still owns 51%) to relinquish a majority of voting shares...In a recent feature on Seattle's French Connection, the Microsoft Network web site recommended the croissants at **Le Fournil** (3230 Eastlake Ave., 328-6523): "artful pastries you almost feel guilty about destroying, until that first heavenly bite."...**CruiseMasters Boating Instruction** program (726-9761, or <http://www.cruisemasters.org>) serves new boaters, as well as boaters moving up to larger boats. Founder/lead instructor Mike Jackson and his wife and co-owner, June, live and work aboard their classic 46' Richardson at 2925 Fairview Avenue East...**14 Carrot Café** (2305 Eastlake Avenue, 324-1442) is hosting the first exhibit of photos of Seattle musicians by Tom Mehren, who uses a digital camera that uniquely captures multiple angles and expressions of the artists' faces as they move during the shot. Continues through November...Cris Javidando and Simon Fraser own **Espresso Splendido** (2946D Eastlake Ave., 325-8299; there is also a Stone Way sister store) which is open every day of the week. Hours are 6 a.m. to 1 p.m. Mon.-Fri.; 7 a.m. to 2 p.m. Saturdays and Sundays... Terry Esposito of **Travel Experts** (2825 Eastlake Avenue East 322-8334 terry.travelexperts@wspan.com) says it is not too early to begin planning your

Business Notes-Continued

Hawaii and Mexico and Europe in order to get the best places and deals. Travel Experts arranges tours, air, rail, and cruise tickets, and accommodations...**Tour International** (3105 Eastlake Ave. E., 498-3066) is offering to help American men find a Russian wife. This January a tour of historic Irkutsk near Lake Baikal promises an average of "three or four ladies for each gentleman." Assistance is available with translation and in obtaining a fiancée's visa...**Urban Design Co.** (2727 Fairview Ave. E.; 325-4834.) offers general contracting and project management for new and remodeled kitchens and baths, and also sells factory-direct cabinets and other kitchen and bath products. The company welcomes the special challenges of houseboats; in charge is Bill Wilcox, a houseboat resident at Hamlin Pier (offices are also at Hamlin Pier).

Send your business news to Chris Leman (cleman@oo.net), 85 E. Roanoke Street, Seattle 98102-3222.

How to prevent falls

At home, falls are the leading cause of death, with many elderly and young people taken from us. In falls, head injuries cause the most deaths, but up to one quarter of those who break a hip also die within three months of the surgery. Obviously something to be avoided! Here are some suggestions from the Evergreen Safety Council (401 Pontius Avenue N., Seattle 98109, 382-4090):

- Use nonskid mats or appliques in bath and shower, and consider install handrails.
- Repair or replace rugs that are ripped or lifting in the corners.
- Make sure all area rugs are skid proof.
- Do not lean or sit on railings of high porches or balconies or lean against screens or windows.
- Store frequently used items within arms reach.
- Maintain uncluttered and unobstructed traffic patterns in each room.
- Keep electric cords, toys, and pet beds and feeding bowls out of the traffic pattern.
- Keep floors clean of spilled water and other liquids.
- Place nightlights in the kitchen, bathroom, and hallways.
- And beware of steps, the single most dangerous part of your home; falls typically occur on the first or last step.

Condominium Specialist

**Questions about Condominiums?
I can help**

If you have questions regarding the market or the value of your condominium, please give me a call. I specialize in condominium sales and would be happy to help.

*Call me today for a **FREE** market evaluation of your home.*



Michael Bill
Direct 206-660-7488
Windermere Real Estate Company
Windermere



2366 Eastlake Ave. E.
324-3160

*Open seven nights a week for dinner
and late night dining
Newly remodeled • Free garage parking*

-Eastlakers encouraged to comment on UW plan - Continued from Page One

UW has not accepted ECC's proposal to extend the outer edge of the zone (now extending south only as far as Roanoke Street) in which there is a ceiling on its leasing of office space. The current outer boundary in Eastlake is closer to the center of campus than in any other neighborhood, thus encouraging leapfrog development south of Roanoke. (UW also has not accepted ECC's request that the leasing limit apply to such UW affiliates as University Physicians.) UW contributes to the cost of only those residential parking zones that are located within the zone; UW-generated parking on our streets is common now that students have a bus pass making it easy to use our neighborhood streets as a free "park and ride."

ECC board members Anthony Vincent (avincent@qwest.net, 328-5409) and Chris Leman (cleman@oo.net, 322-5463), have been sharing a seat on the City University Community Advisory Committee (CUCAC); Chris would like to step down from this assignment. They welcome volunteers to help, and solicit your reactions to the UW plan and EIS, c/o ECC, 117 E. Louisa St. #1, Seattle 98102.

Copies of the UW master plan and EIS are available for public review at the UW and City libraries, on the web at www.washington.edu/community/cmp.html, or by via 543-3773 or masterpl@u.washington.edu. This e-mail address may be used for comments on the master plan, which may also be U.S. mailed to Theresa Doherty, Master Plan Coordinator, 22 Gerberding Hall, Box 351279, Seattle 98195-2205. Comments on the EIS should be sent to Fred King, University Facilities Office, Box 352205, Seattle 98195-2205. Suggested deadline for comments is Nov. 30. Two public meetings on the master plan will be Dec. 6, one 12-2 in HUB room 200ABC, the other 6-8 at the University Heights Center, room 209. And be at TOPS/Seward library Jan. 17 when Eastlake hosts a UW presentation and discussion.

Shirts, posters benefit parks

There's still time to purchase the T-shirts and posters from the July 15 dedication of Fairview-Olmsted Park. Designed by local artist Robert Rudine, they depict the celebrated guerrilla-art "white board" that proposed the park where another white board proposed a gruesome office tower. The T-shirts are \$15 and the posters are \$10; all proceeds benefit parks in the Eastlake neighborhood. Make checks out to Olmsted-Fairview Park Commission, and mail c/o Robert Rudine, 3125 Eastlake Avenue E. #B, Seattle 98102-3875.

Louisa Arborway

Input from the July and September public meetings has produced proposals for subdued lighting, and installation of a metal trellis to support the overhead bushes. Drawings are on display at Lake Union Mail. Please submit comments to Louisa Arborway, c/o ECC, 117 E. Louisa St. #1, Seattle 98102, or to krallc@oo.net.

Free Trees!

Free trees delivered to your planting strip (between sidewalk and curb) or yard if someone (owner or renter) will agree to water them in the hot weather! For planting strips, volunteers will even plant them for you! The trees have got to be planted this winter, so reserve your favorite variety today. Contact Chris Leman, 322-5463, cleman@oo.net or Cheryl Thomas, 329-2696, thomaslane@msn.com. Sponsored by the Eastlake Community Council and Olmsted-Fairview Park Commission.

G&H PRINTING
The Corner for Fine Printing

2370
EASTLAKE AVE. E.
SEATTLE, WA 98102

E. LOUISA ST.

phone 329-9888
fax 324-3705

LAKE UNION MAIL

20196

19 329 1468 89

Franklin Avenue Turns Green, then Gold

The beginning of school this September also marked the long-awaited opening of the Franklin Avenue Green Street. Although we are still working to complete some parts of the Green Street and the formal dedication will not happen until sometime next year, we hope you are enjoying strolls through the golden fall leaves or a game of one-on-one at the basketball hoop.

The Franklin Avenue Green Street is a public right-of-way, designated by City Council as a Type IV green street (meaning no vehicles except for emergencies). It is open for shared community and school use at all times, and is being developed with funds and labor from the Eastlake community, TOPS, Seattle School District and Seattle Neighborhood Matching Fund Program. The southern part of the Green Street is intended for low-level active play, and the northern part under the tree canopy is a quiet space for passive recreation.

The two kiosks at the north and south ends of the Green Street were designed and built by architect Kevin Price, and are ready and waiting for your posted notices (staples work well and are easily removed). Five of the six metal benches designed and built by artist/architect Jennifer Weddermann are also installed and ready for use, and we'll be finishing the ground surface beneath them soon. We are still working with Jennifer on changes to the game table and on a sixth bench.

While you are enjoying the Green Street, please think about donating a small amount of time to help maintain it. As part of our grant, we need to develop a maintenance program, some of which must be done by the community. Things like periodically removing outdated notices and staples from the kiosks, raking leaves, weeding, summertime watering, picking up litter and spring/fall planting and pruning will be our responsibility. You could help at a community event, or adopt a small part of the Green Street to take care of at your own pace.

We especially need immediate help with weeding -- we promise it is much easier than the weeding we all did last spring! An hour now and then really helps to keep the weeds under control and avoids the use of chemicals for weed control.

If you can help now with weeding or maintaining the kiosks, would like to adopt a part of the Green Street or be on a list for other types of periodic maintenance, please call Carol Eychaner at 324-1716. Enjoy!

Congested Parking Alert Near Seward/TOPS School!

The following large events are scheduled for TOPS/Seward School during the next two months. Beware, if you return home and need to park your car on the streets near the School during these events, you will likely not find a space! If you move it (your car), you'll lose it (your parking space)! Thanks, TOPS, for providing the information.

12/8: Middle School Play, 6:30 - 9:00 p.m. 12/9: Middle School Play, 1:30 - 4:00 p.m. and 6:30 - 9:00 p.m.



Help Sylvia Scott, a long time Eastlake resident, in her fundraising efforts for the arthritis foundation. She is on the "Joints In Motion" team and walking a marathon October 30, 2000. She has until Nov. 30th to raise the final \$1700 in donations (already has raised \$2600 !!). The arthritis foundation is the only non-profit organization that supports research into the cure for and prevention of arthritis and related diseases such as lupus, crohn's disease, bursitis, gout, and others. Arthritis affects 1 in 3 households and is the leading cause of disability in the U.S. It's not just older adults. So if you are a business or an individual please help support this very worthy cause...remember All donations are tax deductible and all donators will be sent a receipt. Every dollar helps !!! Send donations to sylvia Scott, 2024 Franklin Ave e #3F, Seattle, WA 98102 or pledge by email to sscott@infree.com. Or by phone to 329-9305 and she will arrange to pick up your donation. Make your check out to "The Arthritis Foudation". Thank you all!

Rogers Playfield Moving Ahead

Fundraising efforts are underway for the new playground at Rogers Playfield, slated for completion in September 2001. The Friends of Rogers Playground just received word that the Department of Neighborhoods has recommended a matching grant award of \$115,000. In a highly competitive round, Rogers Playground received one of the highest awards in the city.

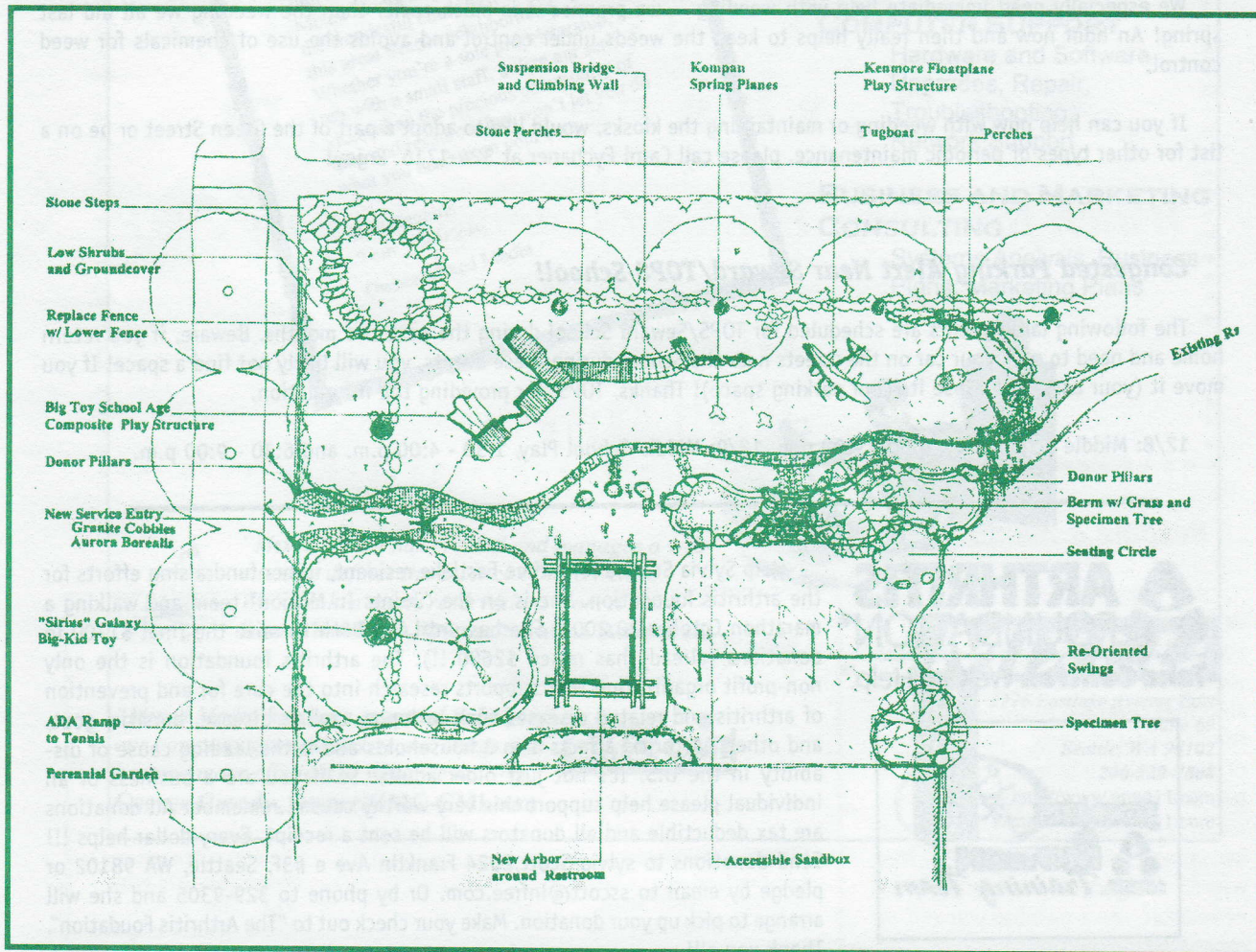
Both Eastlake and TOPS volunteers have been busy applying for additional dollars through private and corporate foundations to match the City grant. SAFECO, Kenmore Air, and The D.V. & Ida McEachern Trust have made generous contributions bringing the current total raised to \$160,000. The overall budget for construction, landscaping, and playground equipment is \$280,000.

Plans for the playground were developed and approved over the last year through a series of public design workshops. Barker Landscape Architects have worked closely with the Friends of Rogers Playground, representatives from the Department of Parks and Recreation, and all who attended the public workshops to create a unique vision of Lake Union. The playground offers many opportunities for play for kids of all ages, including a climb-on float plane.

As part of the fundraising efforts, personalized glass leaves will be imbedded in pillars to commemorate donations to the playground. Local glass artist Gerry Newcomb, who made the street names in Eastlake's popular Corner Stones project, is producing the leaves personalized with names – a unique twist to the more commonly seen bricks, tiles and pavers (think SAFECO field or Pike Place Market).

Brochures outlining details for the glass leaves are available in many Eastlake retail locations. Lake Union Mail has samples of the glass leaves on display, as well as the playground design. To get involved with the project and for more information, call Laurie at 323-4556.

Renovation Plan



Delicious Planet

Don't have time
to cook?



Want a
healthier diet?

fresh, organic, gourmet meals delivered weekly

Weekly rotating menu planned by a nutritionist with an emphasis on high-fiber & low-fat. Each delivery comes with a big, beautiful salad, 4 entrées and a veggie side dish. 4-5 complete meals. Yummy ethnic dishes (vegetarian menu available) made with fresh herbs & spices, a variety of organic, seasonal veggies, whole grains, fish and free-range poultry. Let us save you time - menu planning, shopping, cooking, clean-up & delivered to your door! Try us - we know that you will be hooked!



Check out the weekly menu at
www.delicious-planet.com
206.720.7017 info@delicious-planet.com

*Advertise in our newsletter
and reach even more poten-
tial customers in our area.*

*Call Anthony Vincent @
328-5409 for our reasonable
advertising rates and dead-
line information.*



Visit Your Credit Union at www.sharecu.com

Watch for Home Banking Coming January 2001

SHARE

CREDIT UNION

Become a member!

Our newsletter is published and delivered six times a year entirely by the efforts of some very dedicated volunteers in our community. Membership dues cover the entire cost of printing and related costs. Hand delivery of the newsletter to local business outlets is a courtesy. We encourage individual residents and local businesses in becoming a member as it goes a long way to defray costs in publishing our newsletter. As a member you will receive a mailed version.



**FEDERAL MORTGAGE
COMPANY, INC**

WE SPECIALIZE IN MORTGAGE LOANS FOR SELF EMPLOYED INDIVIDUALS

SPECIAL DISCOUNTS FOR EASTLAKE AREA RESIDENTS, BUSINESS OWNERS, AND EMPLOYEES

CONRAD WOUTERS
2371 EASTLAKE AVENUE EAST
SEATTLE, WA 98102
EMail: conrad@fedmtg.com

PAMELA WOUTERS
PHONE (206) 325-8400
FAX (206) 325-8482
EMail: pam@fedmtg.com

Serving Eastlake Businesses Since 1996

MIXED Media

Greetings,

Mixed Media has been working with entrepreneurs and small businesses in the Eastlake neighborhood since 1996. We've helped a lot of people grow their businesses and improve their image in a variety of ways. From upgrading computer hardware & software, designing print and online materials, to writing first rate marketing and business plans, Mixed Media has enjoyed working with the wonderful client base we've built in this great Seattle neighborhood. Whether you're a sole proprietorship, or run with a small staff, utilize our services when the precious commodity of time and resources just won't let you do what you need to on your own.

Best Regards
Tom Mehren
Owner/Mixed Media

AFFORDABLE BUSINESS SERVICES

GRAPHIC DESIGN

Brochures, Logos, Letterhead, Envelopes, Business Cards, Presentations, newsletters

WEBSITES

Design, Marketing, Management

SOFTWARE TRAINING

One on One, Groups

COMPUTER SUPPORT

Hardware and Software Upgrades, Repair, Troubleshooting, Network Support

BUSINESS AND MARKETING CONSULTING

Systems Analysis, Business Plans, Marketing Plans



"Mixed Media has created and manages a website that defines the essence of who we are. We've taken many reservations from it since" - Susan Kaufman, Owner/Serafina Restaurant

"Mixed Media has been essential in helping our company grow, improve our image and become more efficient at what we do" - George Casady, Owner/GMC-CMI.com



MIXED

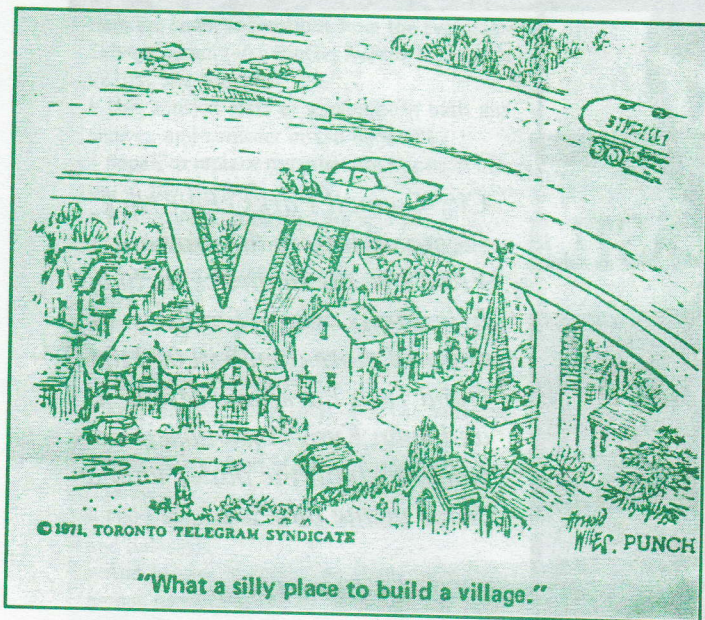
e
d
i
a

2226 Eastlake Avenue East
Suite 69
Seattle, WA 98102
206-329-7808
<http://www.mm411.com>
E-mail: info@mm411.com



Cory Preston gets his Park Ranger card from Chris Leman for all his help in building the park and keeping it clean.

Photo by John Barber



"What a silly place to build a village."

Now Open

*Gourmet Vegetarian Cuisine
on East Shore of Lake Union*

café
AMBROSIA
Elegant Organic Vegetarian Cuisine

Fall Dinner Selections

Salads

Fresh Red & Green Pear Salad
Ambrosia Caesar Salad
Warm Spinach Salad

Soup

Harvest Carrot Ginger Soup

Appetizers

California Sushi
Curried Vegetable Samosa
Autumn Rosti

Entrées

Wild Mushroom Surprise
Grilled Vegetable Kebabs
Mediterranean Napoleon
Grilled Polenta Safari

Hours

*Lunch: Tues. - Fri. 11:00 AM to 2:00 PM
Dinner: Tues. - Sun. 5:00 PM to 10:00 PM
Sunday Brunch: 10:00 AM to 2:00 PM*

*White Tablecloth Service
Smoke Free Environment
Reservations Recommended*

2501 Fairview Ave. East, Seattle, WA 98102

T: 206.325.7111 F: 206.325.2827

www.cafeambrosia.com

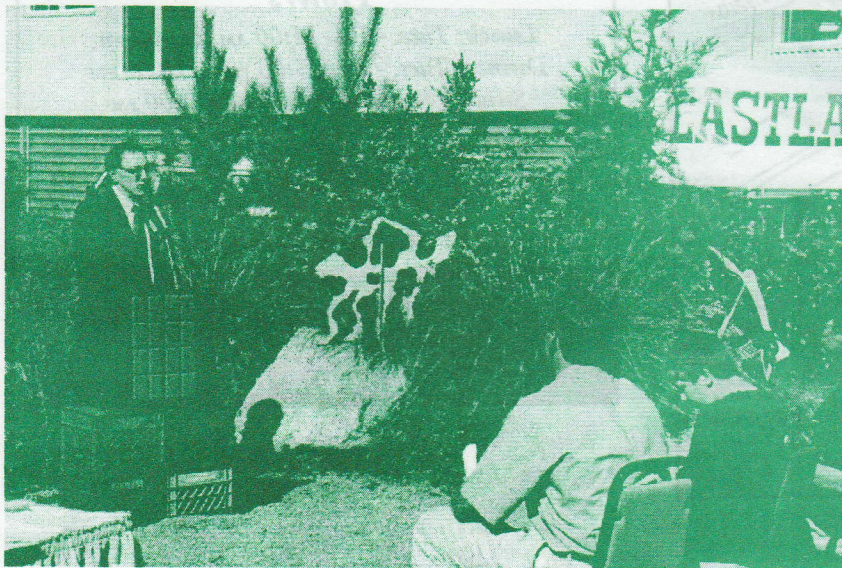


Mayor Schell tests the WSDOT "no trespassing" sign that would be removed by his Corridor Park Plan under I-5 between Capitol Hill and Lake Union. Also facing the camera: Jon McConnell of the Gates Foundation, and John Eskelin and Jim Diers of the Department of Neighborhoods.

Photo by Chris Leman

Mayor Paul Schell and ECC President, Owen Reese unveil the boulder inscribed "Good Turn Park". They used the "walking fish" flag handcrafted by Barbara Donnette.

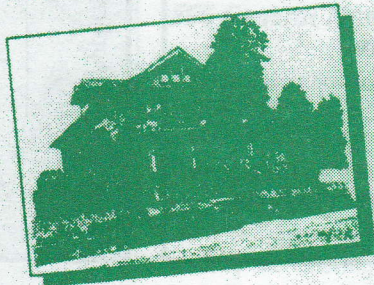
Photo by John Barber



City Council Parks chair Nick Licata addresses the crowd. From left, the audience includes Eric Jarvis, whose family donated more than \$30,000 to Good Turn Park; and Matthew and John Knowles, whose company built the park's unique cedar picnic table.

Photo by Chris Leman

For any housing or real estate investment needs you have in the greater Seattle area, call Windermere's most metropolitan real estate office. Nestled in the heart of the Eastlake Community, with 33 professional Realtor's and top of the line administrative support, we're here to assure you of a pleasant and successful real estate transaction.



Let us help you today.

206.448.6000

eastlake@windermere.com

www.windermere-northwest.com/eastlake/



Windermere Real Estate / Northwest, Inc.
 1100 Eastlake Avenue East, Suite 200
 Seattle Washington 98109-4451

**FIRST
 CLASS
 SERVICE...
 SERVING
 THE
 GREATER
 SEATTLE
 AREA**

You Have Nothing To Lose But Your Pain

FACT: Chiropractic offers

Proven Relief for:

- ▶ Auto Accidents
- ▶ Back Pain
- ▶ Headaches
- ▶ Neck Pain
- ▶ Sports Injuries

Acupuncture & Massage
 are also available

No Charge
 for Initial
 Consultation

Eastlake Chiropractic Center

206-324-8600

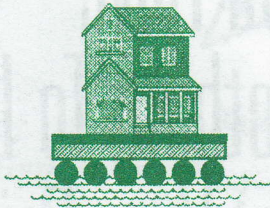
2722 Eastlake Avenue East
 Suite 360, Seattle WA 98102



*Dr. Lincoln
 Kamell*

*Preferred provider for: Regence, Blue Cross,
 Group Health, Virginia Mason and others.*

Floating Home Insurance



**FINALLY!
A BETTER FLOATING HOME INSURANCE POLICY.**

It has taken 22 years and the backing of the oldest marine insurance company in North America to get it right... and to get it *priced right too!*

1. Very competitive rates, far superior coverages
 2. Agreed value on total loss. No depreciation.
 3. Personal property covered ashore, or in storage units.
 4. Automatic coverage for adjoining floats, structures
 5. Freeze damage covered. Flooding covered.
 6. High liability limits available.
 7. Medical payments included.
 8. Salvage coverage included.
 9. Flexible deductibles to lower premium.
 10. Hired workers covered while at floating home.
-and more!

**CONTACT THE BOAT INSURANCE AGENCY AT
285-1350 FOR DETAILS AND A QUICK COMPARISON
(conveniently located at 1500 Westlake on Lk. Union)**

This exclusive program is brought to you by
Cigna Insurance and the Boat Insurance Agency, Inc.

ECC Membership Application Eastlake Community Council

Name

Address

Phone

- Household \$ 25
- Business \$ 50
- Senior Citizen/Student/Low Income \$ 10
- Donation \$ _____

Interests

- Parks and Open Spaces
- Traffic/Parking Issues
- Building Guidelines
- Newsletter Distribution
- Fundraising
- Work Parties
- Community Art Projects
- Community Meetings

Member Status

- New
- Renewal

Eastlake Community Council — 117 E. Louisa #1, Seattle, WA 98102

POSTAGE

Eastlake Community Council
117 E. Louisa St. #1
Seattle WA 98102