

Serving the Eastlake Community

# EASTLAKE

N E W S

## BOAT CRUISE WAS GREAT

by Daphne Lee-Larson

Light rain did not dampen spirits June 21 at ECC's summer solstice party cruise around Lake Union and Lake Washington. The three hours ended all too soon as 130 Eastlake residents, businesspeople, and property owners dined, chatted, and danced the night away.

Special thanks to local business Fantasy Cruises and Captain Jeff Behrens who donated the ship for this memorable event. The ISLAND SPIRIT, a spacious 125-foot vessel whose home port is Eastlake, offers bar & catering packages for 50 to 150 people. To reserve for special events or cruises up to the San Juans, call Jeff or Stacy at 324-0903.

TIM TURNER BAND, a top Blues band, gained a lot of fans that night. They also perform at Bridges Bar & Grill on Eastlake, Larry's Greenfront Cafe and RC's Billiards, and open for CoCo Montoya at The Ballard Firehouse. Upcoming dates include July 24 under I-5 (see related story page 8) and August 20, 6-9 p.m. at Bremerton's Concerts on the Boardwalk. For private events and information on other performances, call Michael Kahler at 301-9855.

It's time for board elections.

For information on becoming a board member for the Eastlake Community Council see David Huber's column and ECC nominations article on Page 4.



Daphne Lee-Larson, volunteer who organized the June 21 Eastlake Cruise (left), Jey Blanco of Pomodoro and Susan Kaufman of Serafina (right). For more pictures of this event see page 6.



## Business Notes

By Chris Leman

The Eastlake News is a bi-monthly publication of the Eastlake Community Council, to inform the community of issues concerning the Eastlake area.

### Board Members:

David Huber  
President

Marilyn de Guzman  
Michael de Guzman  
Vice President  
(shared position)

Gabriel Hajiani  
Treasurer

Owen Reese  
Secretary

Judy Smith  
Newsletter Editor

Leann Rayfuse  
Desktop Publishing  
& Layout Production

Send stories, letters and ideas to the Eastlake News at:  
117 E. Louisa St. #1  
Seattle 98102

Have an ad for the Eastlake News?  
Please contact  
Judy Smith at  
394-5259

Eastlake businesses played a key role in the June 21 neighborhood cruise. **Daphne Lee-Larson**, a local resident and businesswoman orchestrated the successful event, and the cruise ship *Island Spirit* was donated by **Fantasy Cruises**, an Eastlake business. More than a dozen local businesspeople were on board. ...

Recent listings of the largest corporations in the state included several that are Eastlake-based, including **Shurgard, Wards Cove Packing Company and National Frozen Food**. ...

Eastlake's Internet businesses continue to proliferate. Latest to reach our notice is the **OnLine Shoe Store**, headquartered at 1530 Eastlake Avenue E. #301 (860-5039, [www.onlineshoes.com](http://www.onlineshoes.com)) and offering a wide range of brands and styles. ...

**Erutech** (3123 Eastlake Ave., 324-3223, <http://www.erutech.com>) was cited in the June 3 New York Times as a "hot Seattle startup." The firm offers a revolutionary billing process allowing hospitals and doctors' offices to submit claims and monitor billing and financial status over the web, without extensive on-site hardware and software....

**SoftResources LLC** (2517 Eastlake Ave. E., 860-2400, [www.softresources.com](http://www.softresources.com)) is a management consulting firm that advises companies on software, including selection, negotiating contracts for purchase, and evaluating performance. ...

**WRF Venture Center**, located at 2815 Eastlake Ave., has opened an incubator for small high-technology startups, with preference for companies sponsored by WRF Capital, the venture capital arm of the Washington Research Foundation. ...

**Jonathan Quinn Barnett, Ltd.** (3201 Fairview Ave., 322-2152, [www.jqbltd.com](http://www.jqbltd.com)), formerly at Industrial Light and Magic and the international styling workshop at Chrysler, does exterior and interior ship design; among his efforts was refit of the M/V *Kirkland*, a 1924 ferry now operated as a cruise ship by Argosy. ...

Eastlake is a major base for the **National Oceanic and Atmospheric Administration**. In May, the U.S.Senate confirmed **Rear Admiral Evelyn Fields** to command NOAA's Commissioned Corps. Admiral Fields, who was stationed in Seattle 1988-1990, was the first woman to command a U.S. government ship and is now the first woman to head one of the nation's seven uniformed services. ...

The April 13 Seattle Post-Intelligencer featured a photo of construction of a floating home designed by Eastlake architect **Gene Morris** (789-7611). Built in British Columbia for a Lake Union location, the unique houseboat has a submerged den with a three-foot underwater porthole. ...

**Doran Patrick's Custom Upholstery** (323-5225) has relocated to 1807 Eastlake Avenue, where it will be adding a showroom for retail sales. ...

**Washington State Employees Credit Union** (1500 Fairview Avenue E.) has an impressive series of evening talks and workshops on home improvement, gardening, travel, and personal finance. For information: 720-6509 or [www.wastatecu.org](http://www.wastatecu.org). ...

Our previous column failed to accurately state that Gios bikes are made in Italy; for the correction, thanks to **Zen Bikes and Repair** (3103 Eastlake Avenue, 860-4922), which sells and services these Italian beauties.

...Please send business news to Chris Leman, 85 E. Roanoke Street, Seattle 98102 Phone/fax 322-5463, [clemam@oo.net](mailto:clemam@oo.net).



Letter to the Editor:

## What the Berger Partnership has and has not done.

Dear Editor

It has recently been brought to our attention that some of our neighbors believe that The Berger Partnership developed the duplex located at 2026 Fairview Avenue East which was recently given a poor design review by Mark Hinshaw in his Seattle Times article titled "Density That Fits".

The Berger Partnership did not develop the property nor do we own it. We have however shared our parking lot with neighbors over the last 15 years, slowed traffic on Fairview Street through our renovation designs and further designed Hamlin Street Park pro bono. We have also cleaned up Terry Pettus Park as an office on several occasions. Other contributions to the nearby neighborhood include landscape design for Zymogenetics, REI, Seattle Center and the Merrill building.

We would also like to remind our neighbors that there is a process in place for mitigating bad design before it is built called Neighborhood Design Review. We encourage people who are truly interested in speaking out for the design integrity of the community to participate in design review meetings.

Sincerely,

THE BERGER PARTNERSHIP, P.S.

## HIGHWAY BATTLES TO BE RECALLED JULY 25

Now-thriving Seattle residences, businesses, parks, and shoreline areas were once slated to be replaced by highways. Citizens successfully prevented proposals to demolish or shadow Roanoke Park and Seward School and wall off the south end of Lake Union. Could it happen again? The redoubtable Margaret Cary Tunks, who was in the thick of those struggles, tells the story in a new edition of her book, "Seattle Citizens Against Freeways: Fighting Fiercely and Winning Sometimes." Tunks will summarize her book and hand out free copies Monday, July 25, 7:30 p.m. at the Montlake Community Center, 1618 E. Calhoun St.



## The Wild Iris

Original Designs in Stained Glass

Mimi Iwami

3204 Harvard East  
Seattle, Washington 98102  
(206) 328-0888

My specialties include custom designs in stained glass, renovations of antique stained glass, & gifts for all occasions.

*For any housing or real estate*

*investment needs you*

*have in the greater*

*Seattle area, call*

*Windermere's most*

*metropolitan real*

*estate office. Nestled in*

*the heart of the*

*Eastlake Community,*

*with 33 professional*

*Realtor's and top*

*of the line*

*administrative support,*

*we're here to*

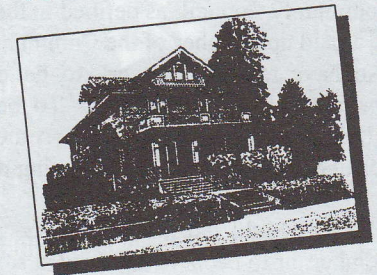
*assure you of a*

*pleasant and*

*successful real*

*estate transaction.*

**FIRST  
CLASS  
SERVICE...  
SERVING  
THE  
GREATER  
SEATTLE  
AREA**



*Let us help you today.*

**206.448.6000**

[eastlake@windermere.com](mailto:eastlake@windermere.com)

[www.windermerenorthwest.com/eastlake/](http://www.windermerenorthwest.com/eastlake/)

**Windermere**

Windermere Real Estate / Northwest, Inc.

1100 Eastlake Avenue East, Suite 200

Seattle Washington 98109-4451

## President's Column

Why would anyone want to be a member of the board of directors of the Eastlake Community Council? Obviously there is the Fame and Fortune of it all. But, in addition to those features, there are other things about voluntary community service in your own neighborhood that may well brighten up your life.

I first got involved as a board member of this council in 1990 when I moved here. It was a way for me to connect with neighbors who were working to preserve and enhance the quality of life in this very cool place. It was like a seat at one of the great participatory events of American Democracy. Here at the close of the second full American Century there are still a lot of bugs in the system and many opportunities to clean it up and make it better. Believe it or not, the Eastlake Community Council has a voice that is heard by the city in ways that result in Open Space, Community Art, Effective Long Range Planning and its implementation, and international modeling for what community participation can look like.

There are also the personal connections. I have had the privilege of working with some wonderful individuals, people with a lot of heart and dedication to something that is dear to us all, our homes and their environment. Some friendships have become deep and lasting. Some relationships have been friendly and cooperative. Some encounters have been "challenging." On balance, my experience with fellow Eastlake activists, and the people involved in projects, has been worthwhile and my life has been enriched.

The new century holds a slew of exciting projects that have evolved from our Neighborhood plan. There is the opportunity to make a substantial difference in how the plan manifests. This is going to be a major part of our work in the next year. It will be an exciting time. You may want to be a player.

This fall we will have our annual election of the Board of Directors of the Eastlake Community Council. To qualify as a candidate you must be a member of the Eastlake Community Council, as defined in the bylaws. It is not an onerous qualification. You must be a paid up member of the Community Council by a certain time before the election. You also have to want to work to better your community and cooperate with your fellow Eastlakers in that endeavor. To be sure, it must also be a source of satisfaction and self-expression that gives you some personal reward. Because, for all the Fame and Fortune, there's got to be something more to keep this thing interesting.

If you would like to explore the possibilities and opportunities of service as a board member, or to become involved at some other level, please feel free to contact me at home, 322-2499, or work, 621-8822.

David Huber

## NOMINATIONS SOUGHT FOR ECC ELECTION

The Eastlake Community Council is an all-volunteer neighborhood organization that will soon celebrate its thirtieth anniversary. Nominate your neighbor or yourself to join in its good work. Annual election in October selects board members and officers. Send a letter with biographical information to: ECC nominations, 117 E. Louisa St. #1, Seattle, WA 98102.

## FIBER DIG APPEALED

Friends of Lake Union and Jack Lemons have appealed to the state Shoreline Appeals Board the permit the City granted to Pacific Fiber Link for burial of a fiber optic line along Fairview Avenue E. and other streets abutting the shoreline between Fairview Ave. N. and the University Bridge. Issues include damage to the shoreline and water quality, and loss of parking to construction staging and employee automobiles (the City limited these impacts during the recent sewer expansion project). Pacific Fiber Link was in error in posting notices informing the neighborhood that the project has been approved; it cannot proceed until the appeal is resolved. For questions, contact Lemons (325-2068, jack@drizzle.com) or Dave Moore and Carol Anderson (325-5463, Dmoore9456@aol.com).

## SOUND MIND & BODY GYMS

- Aerobics- Indoor cycling Classes
- CYBEX/Free Weights
- Certified Personal Trainers
- Basketball/Volleyball/Squash\*
- Complete Cardio Floors
- Seniors Program\*
- Sauna/Steam\*/Tanning
- Free Parking

No Contracts or Initiation Fees

### Fitness for Every-body!

<b>Eastlake</b>	<b>1165 Eastlake Ave. E.</b>	<b>623-2939</b>
<b>Fremont*</b>	<b>437 N. 34th</b>	<b>547-2086</b>
<b>Madison Park</b>	<b>3130 E. Madison St.</b>	<b>329-9133</b>



## UNREASONABLE PROPERTY TAX ASSESSMENTS?

Eastlake property owners are beginning to receive their assessments, and the increases are big--too big. Jules James of Lake Union Mail (117 E. Louisa St., 329-0429, lakeunion-mail@juno.com) is researching the problem, and invites you to drop by and bring a copy of your assessment card and ideas on what to do. Your appeal must be filed within 60 days of when the notice is mailed to you. On how to appeal, call the County Board of Appeals at 296-3496.

## DONATIONS NEEDED TO SAVE THE VICTORIAN HOUSES

The City has issued a master use permit for an office building that will require the removal of the old houses at 1130 and 1134 Eastlake Avenue E. Your donation can help move the houses to a temporary site as they are considered for incorporation into the Maritime Heritage Park at South Lake Union. Donors receive a reproduction of a lovely watercolor of the houses by Pike Place Market artist Sarah Clementson. To volunteer funds or time, contact Chris Leman, 322-5463, cleman@oo.net.

## FUNDS GRANTED FOR EASTLAKE MEDIAN, NEWTON PROJECT

The City Council has approved City Neighborhood Matching Funds to install a median on Eastlake Avenue between Boston and Newton streets, a sidewalk and planting strip on the north side of Newton Street between Eastlake and Franklin avenues, stairs connecting Newton northward to the alley, and landscaping throughout.

Pledges of goods and services, cash, and volunteer time helped Eastlake qualify for these funds, which must be matched dollar-for-dollar by the community. We will need to make good on these pledges, and find more, to qualify for the full \$56,000 in City funds.

Public meetings and mailings will publicize proposed designs. For questions, or to get involved, contact coordinator Chris Leman, 322-5463, cleman@oo.net.

*Thank You!*

*Thank You!*

*Thank You!*

*Thank You!*

*Thank You!*

*Thank You!*

### FACT:

Chiropractic offers Proven Relief for:

Auto Accidents  
Back Pain  
Headaches  
Neck Pain  
Sports Injuries

No Charge for Initial Consultation  
Acupuncture & Massage are also available

## Eastlake Chiropractic Center

206-324-8600

2722 Eastlake Avenue East  
Suite 360, Seattle WA 98102

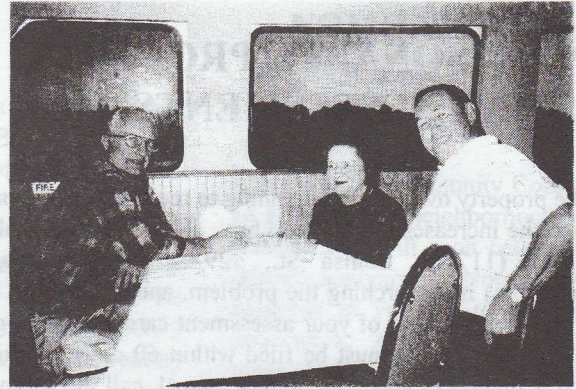


*Dr. Lincoln Kamell*

*Preferred provider for: Regence, Blue Cross, PacifiCare, First Choice, Aetna, Ethix*

## HISTORIC PHOTO OF FORMER EDITORS OF EASTLAKE NEWS HONORED

Volunteer editors have made the Eastlake News one of the most consistent and detailed neighborhood newsletters in the state. Many are in this picture, taken at the June 21 cruise. From left, with the years of their editorship: Robert af Sandeberg (1992-94), Lisa Farin (1986-88), Judy Smith (1998- ), her daughter (2030-32), Martin Cobb (1988-90), and Chris Leman (1990-91). Not pictured: Dan Reiss (1983-86), Milton Clifton (co-editor, 1992), Sally Hamaker and Chris Norred (1995-96), Karen Ziegler (1996-97), Kathy Tucker (1997-98), and several others (please identify yourselves or correct these dates while we search the back issues!).



## Lake Union Crew Permit Process Underway Environmental Impact Statement needed for Project

The City Department of Design, Construction and Land Use has determined that Lake Union Crew's proposed facility at 11 E. Allison St. will have probable significant impacts on the environment and has required the preparation of an environmental impact statement for the project.

An EIS is an impartial discussion of the significant environmental impacts of a project and contains reasonable alternatives, including mitigation measures, that would avoid or minimize adverse impacts or enhance environmental quality. There will be a draft EIS, a public comment period and hearing for the draft EIS, and a final EIS that responds to comments made on the draft. Based on its own review and on comments from the State Department of Fish and Wildlife and from the community, DCLU



Vera and Bill Coleman (owners of Odegard Upholstery), Tim Yerger (apartment owner in Eastlake)

**G&H PRINTING**  
The Corner for Fine Printing

2370  
**EASTLAKE AVE. E.**  
SEATTLE, WA 98102

**E. LOUISA ST.**

phone 329-9888  
fax 324-3705

### Why Pay Higher Rates at Other Financial Institutions?!

Mark your calendar—from **April 30, 1999** to **October 31, 1999** the members of SHARE CU can receive an incredible deal! For each \$5,000 borrowed to either purchase a new or used auto or, pay off an existing auto loan at another financial institution you will earn 500 miles.

With a 20% down payment your auto loan rate would be **6.25%** for 3 years! SHARE CU also offers 100% financing for up to 6 years at 7.50%. Call today to begin earning your miles tomorrow!



*Alaska Airlines Mileage Plan*  
**and SHARE CU**  
**206-568-8080**



All loans subject to the approval of credit.

identified several probable significant impacts, including those on plants and animals (particularly on Chinook salmon that the federal government recently listed as a threatened species) and on transportation and parking in the area. According to DCLU the EIS will also address other environmental issues including impacts on land use, consistency with the city's land use policies and views.

Comments on the LUC project have been submitted to DCLU by the ECC, Floating Homes Association and 3100 Condominium Owner's Association ( a joint comment letter), and by Eastlake residents and businesses. In addition to supporting DCLU's requirement for an EIS, the ECC commented in its joint letter that "the intensity of use and activities and the size of the structures proposed by LUC far exceed the capacity of this constrained site..."

More specific concerns stated in the letter include:

- ◆ The parking proposed by LUC (stacked, valet parking on the project site and off-site parking at Ward's Cove) does not comply with the City's Land Use Code standards for on-site or off-site parking, will not accommodate LUC's daily or special event parking demand and will exacerbate existing congested parking conditions;
- ◆ The traffic conditions resulting from LUC's daily operation and special events will adversely affect pedestrian safety and traffic circulation in an area that includes a new public park (Fairview-Olmsted Park) and a City Council-designated "green street" (Fairview Avenue);
- ◆ LUC's proposal to use ballast to sink the western structure about 2 feet into the water so that its roof is within the height limit allowed by Code will not work because the first floor of the structure, which has numerous door openings, will be submerged below water and flooded;
- ◆ The project does not provide the public access or the extraordinary shoreline amenity that is required by Code for the over-water, non-water-dependent uses proposed by LUC (these uses comprise more than half of LUC's buildings and according to the Code are not preferred uses for scarce submerged land along this part of Lake Union); and
- ◆ The project's effect on public and private views, and the relationship between the Code-required view corridor and the Code-required public access and extraordinary public amenity, needs to be evaluated.

Comments about the project can still be submitted to DCLU, but send them soon. They can be mailed, faxed or emailed to: Christine Bruno, Department of Design, Construction and Land Use, 710 Second Avenue, Suite 200, Seattle, WA 98104-1703; fax # 233-7901; email address christine.burno@ci.seattle.wa.us; phone # 684-5040. Be sure to reference Project No. 9902259.

If you would like a copy of ECC's joint comment letter or have any questions about the LUC project, call Eastlake resident Carol Eychaner at 324-1716.

## Rowing Club Article Correction and Clarifications

The article on the Lake Union Crew court ruling and settlement agreement that appeared in the May/June 1999 Eastlake News had an error regarding the deadline for the rowing club to submit its permit applications to the City. The correct deadline for submitting its applications was May 18, not June 18 as reported. The applications were submitted on May 11.

Other clarifications to the article regarding the settlement agreement are: LUC's structures cannot occupy the Allison Street-end public right-of-way after June 21 (LUC moved the structures to a temporary location on its own property and has requested City approval of the new location); LUC may use 2 toilets and 2 sinks on the upper floor of the western building in conjunction with the storage and use of rowing shells; and neighborhood inspection allowed by the settlement agreement is to be by a designated representative (a resident of the 3100 Fairview condominium is currently designated as the neighborhood inspector).

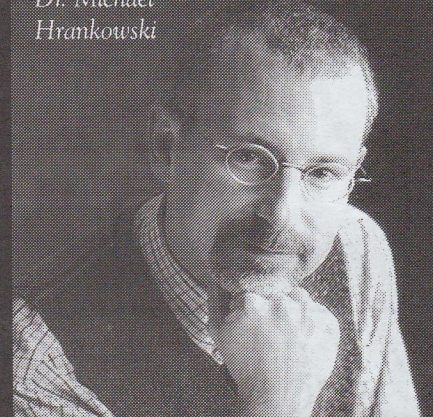
Several inspections of the LUC facility have been made by the City and neighborhood inspector since the agreement was signed and no violations were reported during these inspections.

The 16-page settlement agreement more completely describes the uses of the property that are allowed and prohibited during the permit review process as well as the monetary payments that were made by LUC, the schedule for the permit process and other terms of the agreement.

If you would like a copy of the agreement, want to report potential violations of its terms, or have any questions about the agreement, please call Eastlake resident Carol Eychaner (324-1716).

Dr. Michael Hrankowski

*"Dentistry For Adults Who Are Serious About Their Health"*



Welcome to Our Dental Practice...

- Where health, appearance and function merge.
- Where oral health becomes part of overall health
- Where every choice is your choice.

 **Eastlake**  
Dental Care

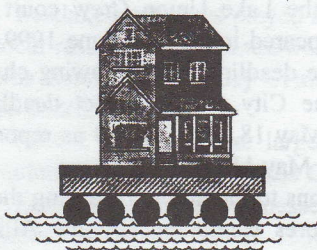
1500 Fairview Avenue East  
Suite 300 Seattle

*Call today for your initial examination!*

**206-325-7456**

For more information  
[www.eastlakedental.com](http://www.eastlakedental.com)

# Floating Home Insurance



**FINALLY!**

## A BETTER FLOATING HOME INSURANCE POLICY.

It has taken 22 years and the backing of the oldest marine insurance company in North America to get it right...  
and to get it *priced right too!*

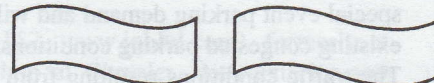
1. Very competitive rates, far superior coverages
  2. Agreed value on total loss. No depreciation.
  3. Personal property covered ashore, or in storage units.
  4. Automatic coverage for adjoining floats, structures
  5. Freeze damage covered. Flooding covered.
  6. High liability limits available.
  7. Medical payments included.
  8. Salvage coverage included.
  9. Flexible deductibles to lower premium.
  10. Hired workers covered while at floating home.
- ....and more!

**CONTACT THE BOAT INSURANCE AGENCY AT  
285-1350 FOR DETAILS AND A QUICK COMPARISON  
(conveniently located at 1500 Westlake on Lk. Union)**

This exclusive program is brought to you by  
Cigna Insurance and the Boat Insurance Agency, Inc.

## I-5 BLUES CONCERT JULY 24

Do you want a quieter neighborhood? Do you like the BLUES? Dance the night away to a free concert, the sounds and the rhythms of the blues at the coolest outdoor stage in the City. It's Saturday, July 24, 7:30 to 10 p.m., corner of Harvard Avenue and Eastlake Avenues, under I-5 just south of the University Bridge. Featured will be Tim Turner Band (nominated "best new blues band"). State and city officials will also report on the \$5 million-plus to be spent on quieting the freeway. Sponsored by Neighborhoods Opposed to Interstate Sound Exposure and the North Eastlake Business Association. For information, or to volunteer, call Wes or Daphne at 320-9847.



## AUTOMOTIVE ART

Restoring classic American cars is a passion for Fairview resident Tom Eggleston, whose master work is a 1934 Ford three-window chopped coupe which made the cover of Rod Action magazine. Resplendent in Deltron Purple Micaltallic and beautifully maintained, the all-steel car has its original fenders and a rumble seat. It is much in demand in car shows throughout the Northwest. Write to us about others who have turned their car into an art form: Auto Art, c/o ECC, 117 E. Louisa #1, Seattle 98102.

## ECC Membership Application Eastlake Community Council

Name \_\_\_\_\_

Address \_\_\_\_\_

Phone \_\_\_\_\_

- ▶ Household ..... \$ 25
- ▶ Business ..... \$ 50
- ▶ Senior Citizen/Student/Low Income ..... \$ 10
- ▶ Donation ..... \$ \_\_\_\_

### Interests

- Parks and Open Spaces
- Traffic/Parking Issues
- Building Guidelines
- Newsletter Distribution
- Fundraising
- Work Parties
- Community Art Projects
- Community Meetings

### Member Status

- New
- Renewal

Eastlake Community Council — 117 E. Louisa #1, Seattle, WA 98102