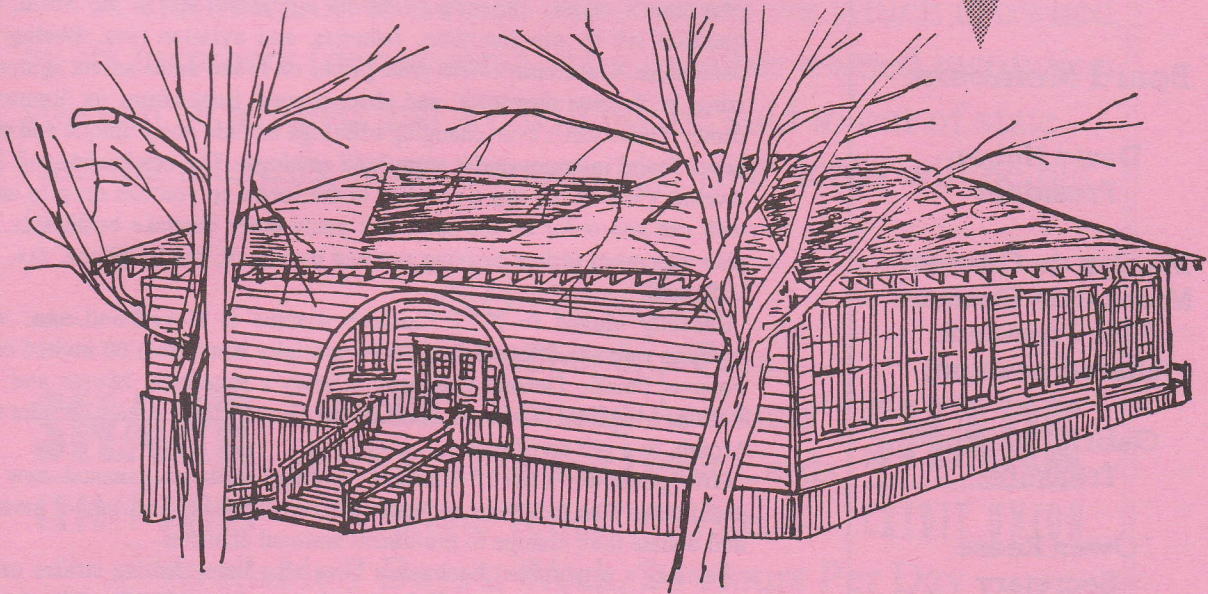


May/June 1999

Serving the Eastlake Community

EASTLAKE

N E W S



Franklin Green Street: Artists' presentations.
Their ideas for how the street might look
June 8, Tuesday, 6:30 to 8:30 p.m. at the Hydrodome.
See article Page 6

Special Lake union cruise to honor Eastlake volunteers.
June 21, Monday.
See article Page 10

Donations needed to save historic houses.
See article Page 6

Rowing Club's Vessel Argument Does Not Float with Judge; Ruling in Favor of City/Neighborhood Leads to Better Shoreline Protection and Settlement of Lawsuit
For story see Page 5

The Eastlake News is a bi-monthly publication of the Eastlake Community Council, to inform the community of issues concerning the Eastlake area.

Leann Rayfuse
Desktop Publishing &
Layout Production

Board Members:

David Huber
President

Marilyn de Guzman
Michael de Guzman
Vice President
(shared position)

Gabriel Hajiani
Treasurer

Owen Reese
Secretary

Judy Smith
Newsletter Editor

Send stories, letters
and ideas to the
Eastlake News at:
117 E. Louisa St. #1
Seattle 98102

Have an ad for the
Eastlake News? Please
contact Judy Smith at
394-5259

Business Notes

By Chris Leman

Eastlake's biggest business news in years was by a nonprofit: this fall, the renovated office building at 1551 Eastlake Avenue will become the home of **Gates Learning Foundation**. Established by Microsoft's Bill and Melinda Gates, the Gates Learning Foundation donates computers and software to libraries and provides free training to librarians. ...

Other nonprofit arrivals include the **Washington Research Foundation** (2815 Eastlake Avenue, 336-5600), leader in policy analysis, especially at the state and local level; and the **Western Land Exchange Project** (2366 Eastlake Avenue, 325-3503), the nation's only public interest organization focused solely on the issue of federal land exchanges, in which public land agencies trade land with private corporations.

Eastlake's rapidly expanding Internet businesses sell to the world, carrying on a tradition set by our maritime, fisheries, and aviation (yes, **Boeing** started here) companies. **Gear.com** offers great prices on brand-name sports equipment, specializing in factory overstock and discontinued items from its Renton distribution center; Gear.com's ever-changing offerings include many unique and small-lot items never found in larger outlet stores and catalogs. The headquarters at 3123 Eastlake Avenue (568-1110) has a monitor in the lobby so you can drop in and sample the web site and order on the spot; like many other Eastlake businesses, the company also welcomes orders arriving not just by e-mail, but by phone, fax, and good old U.S. mail. ...

Recently moved to 2727 Eastlake Avenue is **GreatFood.com**, whose award-winning web site offers thousands of specialty items from 60 invited companies like Famous Pacific Dessert Company, Chewy's Rugulach, Brown and Haley, Killer Pecans, Mo Hotta Mo Betta, and Lobster Gram. Can't decide? Order the Gift of the Month, or a gift certificate. ...

GiftSpot.com (2815 Eastlake Avenue) sells an unusual new kind of gift certificate. The recipients redeem their certificates at a variety of partner merchants and donate their change to prominent national charities. ...

Eastlake's established businesses have also been making strides on the Internet. **Seattle Caviar Company** can be found not only at 2833 Eastlake Avenue, but also at www.caviar.com. That unique web address is attracting caviar orders from all over the world. ...

Salon 1520 (formerly Nailbiz), 1520 Eastlake Avenue (328-8161) had a grand renaming party recently. The full-service salon offers skin, hair, and nail care, waxing, tanning, and massage. ...

SEVA (323-9920) is celebrating a grand reopening at 2312 Eastlake Avenue (in



the beautifully remodeled A.W. Larson building, whose owners Wes and Daphne Larson have also landscaped the parking lot). SEVA's expansion offers ever more of its unusual furniture and gifts, and now original vintage posters, and bath and beauty products. ...

Nearby, the **Flower Lady** (3230 Eastlake Avenue, 325-5751) has expanded to sell not only flowers and plants, but cards, candles, magnets, framed pictures, lamps, and Tibetan rugs. ...

G&H Printing (2370 Eastlake Avenue E., 329-9888) has two new copiers, including a color MITA that can print from computer disks. ...

Zen Couriers (3103 Eastlake Avenue E., 860-4922) is a delivery service that prides itself on being all-bicycle, and all by co-owners Dean and Lisa Lawson, husband and wife. They will deliver anywhere in Seattle, and as far away as Shoreline and Tukwila. The company also offers bicycle sales and repairs, specializing in the premium French-made Gios. ...

AADS Filing (2633 and 3101 Eastlake Avenue, 322-9394) is one of the city's biggest suppliers of dental and medical charts for hospitals and doctor's offices ...

Russian Radio (2714 Eastlake Avenue, 323-8828) not only offers real-time broadcasts from many stations in the old country, but also a lending library of books and videos, all in the Russian language. ...

Thanks to your letters of support, regulators now allow anyone who resides in the Lake Union area to open an account at **SHARE Credit Union** (1600 Fairview Avenue East; 568-8080). ...

One of the city's most popular Japanese restaurants, **Tommy's Sushi** (2501 Eastlake Avenue, 726-9893), recently opened an additional room of tables after **Video Quest** moved a block south. ...

An interesting new eatery, **Cafe Venus** (609 Eastlake Avenue, 624-4516) is now open M-F 8-6 and 10-3 on weekends. ...

Carina Bar and Grill, a refashioned restaurant at 2501 Fairview Avenue East (324-9396), got a nice write-up in the April 8 Seattle Weekly. It is open until 10 p.m. Mondays and Thursdays, and 11 Friday and Saturday. ...

Later hours are also proving successful for **Pomodoro Ristorante** (2366 Eastlake Avenue, 324-3160, which is open until midnight Sunday through Thursday, and 2 a.m. Friday and Saturday. ...

Red Robin, a national chain that started with at Eastlake and Fuhrman Avenues, recently relocated its Northwest Regional Office to 1100 Eastlake Avenue. In keeping with Red Robin's offbeat decor, the office has huge plane and boat models and even a gigantic golf ball. ...

Did we miss anything? Send business news to Chris Leman, 85 E. Roanoke Street, Seattle 98102. Phone/fax 322-5463, cleman@oo.net.



The Wild Iris

Original Designs in Stained Glass

Mimi Iwami

3204 Harvard East
Seattle, Washington 98102
(206) 328-0688

My specialties include custom designs in stained glass, renovations of antique stained glass, & gifts for all occasions.

For any housing or real estate

investment needs you

have in the greater

Seattle area, call

Windermere's most

metropolitan real

estate office. Nestled in

the heart of the

Eastlake Community,

with 33 professional

Realtor's and top

of the line

administrative support,

we're here to

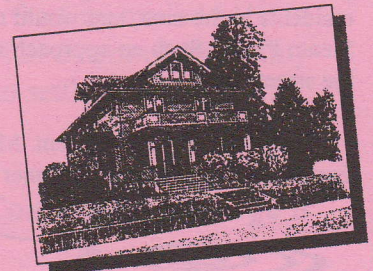
assure you of a

pleasant and

successful real

estate transaction.

**FIRST
CLASS
SERVICE...
SERVING
THE
GREATER
SEATTLE
AREA**



Let us help you today.

206.448.6000

eastlake@windermere.com

www.windermere-northwest.com/eastlake/

Windermere

Windermere Real Estate / Northwest, Inc.

1100 Eastlake Avenue East, Suite 200

Seattle Washington 98109-4451

Design Commission Recommends Denial of Zymogenetics Skybridge

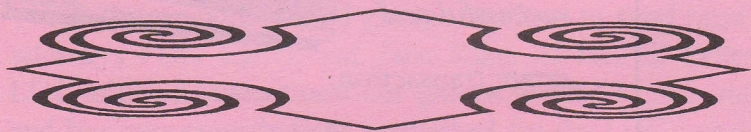
At its May 6 meeting, the Seattle Design Commission unanimously recommended denial of a skybridge proposed by Zymogenetics across Eastlake Avenue. The biomedical company pursued the skybridge to link its operations in the Steam Plant, a historic landmark, with the Nelson Building that it recently constructed across the street.

If Zymogenetics continues with the skybridge proposal, it will have to obtain approval from the Landmarks Preservation Board and the Seattle City Council. Although the Design Commission does not have decision-making authority on skybridges, its recommendation is a required part of the review process and will be considered by City Council. Meetings before the Preservation Board were scheduled for May 14 and 19.

The ECC Board wrote a letter in opposition to the skybridge. The Eastlake Neighborhood Plan includes a recommendation against skybridges and City Council has adopted an Eastlake-specific Comprehensive Plan policy that states skybridges should be avoided and that connections between buildings should be made at street level.

The Design Commission, ECC and other Eastlake residents who are following the skybridge issue all favor street-level pedestrian improvements along this part of Eastlake Avenue. A landscaped median, curb bulbs and/or a mid-clock crossing would benefit Zymogenetics, as well as the general public and all of the businesses and residents in the area, and would not adversely affect the landmarked Steam Plant. Such an approach would enhance rather than abandon the streetscape.

Call ECC Vice President Marilyn de Guzman (322-6611) or Eastlake resident Carol Eychaner (324-1716) for more information.



Correction

The Eastlake News incorrectly implied in the article about NOISE (March/April) that no work or money was slated for mitigation of noise around the I-5 bridge.

In fact, \$450,000 is in the Washington State Department of Transportation budget (part of the 5.2 million slated for I-5 noise mitigation in Eastlake). The \$450,000 is to be used for a study and design to retrofit the I-5 bridge and reduce its sound level

You Have Nothing To Lose But Your Pain

FACT: Chiropractic offers

Proven Relief for:

▶ Auto Accidents

▶ Back Pain

▶ Headaches

▶ Neck Pain

▶ Sports Injuries

Acupuncture & Massage
are also available

No Charge
for Initial
Consultation

Eastlake Chiropractic Center

206-324-8600

2722 Eastlake Avenue East
Suite 360, Seattle WA 98102



*Dr. Lincoln
Kamell*

*Preferred provider for: Regence, Blue Cross,
Group Health, Virginia Mason and others.*

Rowing Club's Vessel Argument Does Not Float with Judge.

Ruling in Favor of City/Neighborhood Leads to Better Shoreline Protection and Settlement of Lawsuit



The City and Eastlake neighborhood groups won a major, precedent-setting victory in the lawsuit filed by Lake Union Crew (LUC) over whether its rowing facility at the foot of Allison Street is exempt from the City's development regulations.

Under the City's development codes, vessels are exempt from the permit processes and development standards that apply to buildings and other land use activities. LUC installed its facility in January 1998 without any permits, claiming that the two buildings were exempt vessels.

However, U.S. District Court Judge Barbara Rothstein responded to pre-trial motions and ruled in March that the rowing facility was not "designed and used for navigation," and therefore "did not fall within the vessel exemption" in the City's Shoreline Master Program.

The ruling seriously undermined the lawsuit that had been filed by LUC in an attempt to overturn a Notice of Violation (NOV) issued by the City in February 1998. The NOV cited the rowing club for failing to obtain required permits and meet development standards. The ECC, Floating Homes Association and 3100 Fairview Condominium Owners' Association jointly intervened in the lawsuit to support the City's enforcement action.

The vessel versus structure issue had serious implications for all shorelines, and the ruling was a major victory for shoreline protection throughout the City and state.

The Court ruling also paved the way for a settlement between the City, the Eastlake neighborhood groups and LUC. After the pre-trial vessel ruling, the only issues left for trial were whether the City misled LUC to believe it could install its facility without permits and whether LUC disclosed the full extent of its facility and operation to the City. Rather than go to trial on these issues, the parties agreed to settle the lawsuit.

Continued on Page 8

SOUND MIND & BODY GYMS

- Aerobics- Indoor cycling Classes
- CYBEX/Free Weights
- Certified Personal Trainers
- Basketball/Volleyball/Squash*
- Complete Cardio Floors
- Seniors Program*
- Sauna/Steam*/Tanning
- Free Parking

No Contracts or Initiation Fees

Fitness for Every-body!



Eastlake	1165 Eastlake Ave. E.	623-2939
Fremont*	437 N. 34th	547-2086
Madison Park	3130 E. Madison St.	329-9133

FRANKLIN GREEN STREET ARTISTS

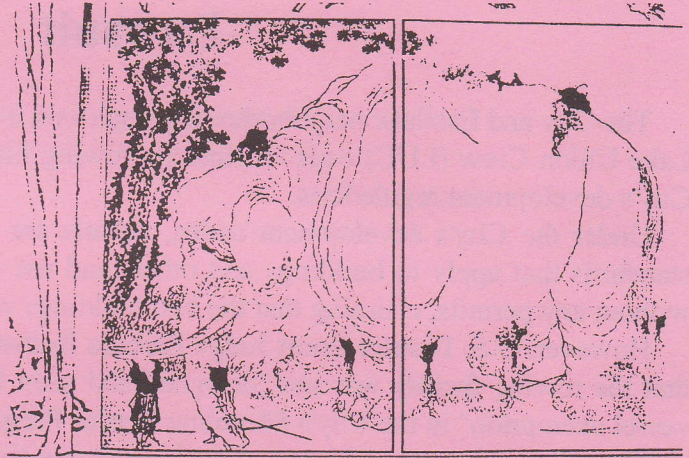
Five artists have been short listed to design proposals for benches, kiosks, and a game/chess table to be included in the Franklin Green Street project. People of the Eastlake community are invited to an open house to enjoy refreshments, meet the artists, and watch their presentations for proposed designs. The open house will be held at the Hydrohouse, south of the Zymogenetics steam plant, on Tuesday June 8, from 6:30 to 8:30 pm. The short listees are: Luc-Alain Fiedler, Stuart Nakamura, Virginia Paquette, Kevin Price, and Jenifer Wedderman.

The image to the right is one of Hokusai's woodcuts, which shows an elephant with a number of men touching various parts of its body, without being able to see the whole. One is touching the toe, believing that to be the extent of the elephant, another holds the tail in the understanding that the elephant is very thin and flexible, while the third touches the shin on the back, recognizing the animal as a hard, thick surface. Each recognition is correct, but an accurate image of the elephant as a whole is possible only when all of the separate perceptions are combined.

When the Chinese characters for "elephant" and "human" are combined, they give the word for "picture" or "likeness" - a semantic accumulation which exemplifies the Zen conception of the world as a sum of a series of details. Perhaps we can also understand art, architecture and the landscape in the same way - a series of details which influence each other as they evolve.

People, place, climate and materials are interwoven in the making of unique spaces such as the Franklin Green Street. By positioning the body with respect to a given place and defining the special value of that place, we are able to establish an informed and sensitive relation between a built work and its surroundings. Regarding the furnishings for the Franklin Green Street project, it is important to achieve harmony between concept and context and an intertwining of design ideas with everyday experience.

Questions, please call Gabriel Hajiani at 206-634-2853, or Carol Eychaner at 206-324-1716.



DONATIONS NEEDED TO SAVE THE VICTORIAN HOUSES

A feature article in the May 4 Seattle Times kicked off the fundraising campaign to move the two century-old homes at 1130 and 1134 Eastlake Avenue to a temporary site at South Lake Union, for eventual incorporation into the Maritime Heritage Park. Donors of \$100 or more will receive a limited edition print of artist Sarah Clementson's lovely 1989 water color of these special buildings; donors of \$25 or more will receive a post card of the same scene. Make checks out to the Eastlake Community Council, and mail to ECC at 117 E. Louisa St. #1, Seattle 98102.

Volunteers are needed to undertake other fundraising activities.

If you would like to help, please contact Chris Leman, 322-5463, cleman@oo.net. Please help this dream become a reality!



2366 Eastlake Ave. E.
324-3160

*Open seven nights a week for dinner and late night dining
Newly remodeled, Free garage parking*

SHORELINE PUBLIC ACCESS

New Street Improvements, Shoreline Public Access and Better Parking Result from Settlement of Furhman Office Building Appeal

The ECC and residents along Portage Bay Pl. E. withdrew their appeals of an office building at 3302 Furhman Ave. E. after signing an agreement with the developer that addressed street improvements, parking and public amenities required for office uses in the shoreline district along Lake Union.

The agreement followed nearly a month of intensive meetings with developer Brad Decker, whose companies own the property next to the Pocock building and applied for a permit to construct an approximately 12,000 square foot office building. ECC representatives Carol Eychaner and Marilyn de Guzman worked with many Portage Bay Pl. residents on the appeals and the agreement, including especially Myrna Cordova, Phil Mark Davis and Elaine Davis, Bob Kerr, and Carl Nyberg.

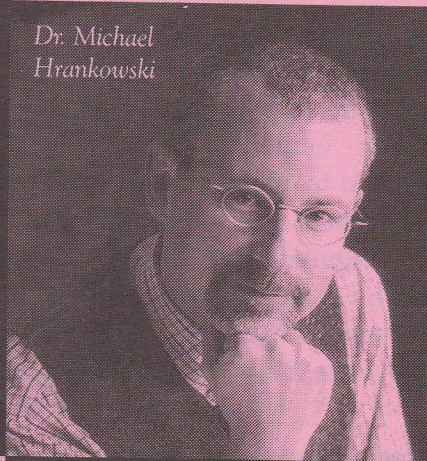
Under the agreement, the developer will:

- Fund improvements to Portage Bay Pl. E. between Furhman and the University Bridge, including a sidewalk along the east side of the street, planting areas on both sides, a widened roadway and a larger turning radius at the curve;
- Contribute \$20,000 cash and \$7000 in-kind construction services for the development of a major shoreline public access project that creates new or enhances existing public access along the shoreline within 1/4 mile of the project site (the site and design will be determined through a community design process run by ECC and Portage Bay Pl. residents);
- Maintain on- and off-site parking spaces according to specific agreement provisions that better ensure long-term availability of parking.

ECC is actively seeking people to plan and organize the community design process for the shoreline public access project. Anyone interested should call Carol Eychaner at 324-1716.

*“Dentistry For
Adults Who Are
Serious About
Their Health”*

Dr. Michael
Hrankowski



Welcome to Our
Dental Practice...

- Where health, appearance and function merge.
- Where oral health becomes part of overall health
- Where every choice is your choice.

 **Eastlake**
Dental Care

1500 Fairview Avenue East
Suite 300 Seattle

*Call today for your
initial examination!*

206-325-7456

For more information
www.eastlakedental.com

Rowing Club continued from page 5

Key provisions of the settlement agreement include:

- ◆ LUC will apply for development permits by June 18 and comply with a defined schedule for review of the permits.
- ◆ LUC structures will be removed from the Allison Street submerged public right-of-way after June 21.
- ◆ The structures can remain temporarily on LUC property while permit applications are reviewed but, in general, they cannot be used, with one exception: the outermost structure can be used to store and launch rowing shells. The exercise rooms, rowing tanks, offices, lockers, lounge and other areas are to be closed off.
- ◆ The City and neighborhood can inspect the structures without prior notice for compliance with the agreement.
- ◆ Different penalties are described for violation of the terms of the agreement, including removal of the structures.

The agreement sets the stage for the permitting phase of the LUC facility, which includes public notice (look for the white land use board) and periods for public comments and appeals. Issues that will be closely reviewed by the City and Eastlake neighborhood groups include public access, public amenities and view corridors that are required by the shoreline code, height, parking, over-water coverage, and non-waterdependent uses. The applications may be approved by the City, approved with conditions or denied.

All three neighborhood groups continue to fund raise to pay for the excellent legal services provided by attorneys Peter Eglick and Jane Kiker of Hessel Fetterman and for the upcoming permit process. The LUC-initiated lawsuit cost our groups about \$35,000, much of which has been paid from generous resident and business contributions earmarked for the LUC issue. Please send ECC contributions to ECC in care of Eastlake resident Carol Eychaner at 2348 Franklin Avenue East, Seattle, 98102, and note "Lake Union Crew" on your check.

For questions about the lawsuit, the upcoming permit process, or contributions (including how to make a tax exempt contribution), call Carol Eychaner at 324-1716.



117 East Louisa Street; M-F 9-6, Sat 10-3

Condominium Specialist

*Questions about Condominiums?
I can help*

Whether you are buying, selling, or just have general questions on condominiums, I am happy to help. Give me a call or e-mail me at the address below. I hope to hear from you.

michaelbill@msn.com



Michael Bill

Direct 206-660-7488

Windermere Real Estate Company

Windermere

A PLACE WHERE "FREE" MEANS FREE!

Whether you live or work in the Lake Union area you and your family are now eligible to join SHARE Credit Union! SHARE Credit Union has been serving employees of Swedish Hospital and Fred Hutchinson Cancer Research Center since 1961.

A credit union is a financial cooperative which is owned by its members (depositors). As a member owned institution you can be assured that we will not be sold to out of state banking interests. More importantly, your needs will be put first.

•NO Fee to Join

•NO Membership Fees

SHARE
CREDIT UNION

•FREE Checking Accounts

•FREE ATM and Debit Cards

•Telephone Teller™ System-

SHARE
CREDIT UNION

Available 7 Days a Week, 24 Hours Per Day

•Low Fixed Rate VISA Cards

•New and Used Auto Loans

•Home Equity Loans

•Lines of Credit

•High Interest Accounts

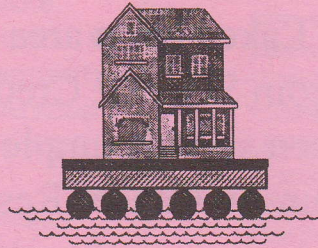
•All this and fast, friendly service!

Our new Lake Union Branch is located at 1600 Fairview Avenue East, on the corner of Fairview Avenue East and Garfield Street, near the NOAA Ships.

Hours: Monday-Friday 9:00am-4:30pm

206-568-8080

Floating Home Insurance



FINALLY!

A BETTER FLOATING HOME INSURANCE POLICY.

It has taken 22 years and the backing of the oldest marine insurance company in North America to get it right... and to get it *priced right too!*

1. Very competitive rates, far superior coverages
 2. Agreed value on total loss. No depreciation.
 3. Personal property covered ashore, or in storage units.
 4. Automatic coverage for adjoining floats, structures
 5. Freeze damage covered. Flooding covered.
 6. High liability limits available.
 7. Medical payments included.
 8. Salvage coverage included.
 9. Flexible deductibles to lower premium.
 10. Hired workers covered while at floating home.
-and more!

CONTACT THE BOAT INSURANCE AGENCY AT 285-1350 FOR DETAILS AND A QUICK COMPARISON (conveniently located at 1500 Westlake on Lk. Union)

This exclusive program is brought to you by Cigna Insurance and the Boat Insurance Agency, Inc.

EASTLAKE CRUISE SET FOR JUNE 21

On Monday, June 21st, celebrate Eastlake aboard the 125-foot cruise ship, Island Spirit. Eastlake-based Fantasy Cruises and its owner, Captain Jeff Behrens, are often seen in the San Juan Islands, but to honor Eastlake's volunteers, they are hosting this voyage to Lake Washington and back, with music by the Tim Turner Band.

Price is only \$15 and includes a buffet (there will also be a cash bar). Call 320-9847 to make reservations, but they must be confirmed with a \$15 check payable to Fantasy Cruises, so preferably send your check now to the coordinator, Daphne Lee-Larson, 3218 Eastlake Avenue E., Seattle, WA 98102.

Boarding will be between 6 and 6:30 p.m. at 1609 Fairview Ave. E. (across from Sound Propeller, and just north of Lake Union Dry Dock), and we will sail promptly at 6:30, with return at 9:30 p.m. (Monday, June 21).

ECC Membership Application Eastlake Community Council

Name _____
Address _____
Phone _____

- | | |
|---|----------|
| ▶ Household | \$ 25 |
| ▶ Business | \$ 50 |
| ▶ Senior Citizen/Student/Low Income | \$ 10 |
| ▶ Donation | \$ _____ |

Interests

- Parks and Open Spaces
- Traffic/Parking Issues
- Building Guidelines
- Newsletter Distribution
- Fundraising
- Work Parties
- Community Art Projects
- Community Meetings

Member Status

- New
- Renewal

Eastlake Community Council — 117 E. Louisa #1, Seattle, WA 98102