

Serving the Eastlake Community

EASTLAKE

N E W S

Meetings

March 5 – Discuss routes for light rail and the monorail with Mayor Schell. From 7-8:30 p.m., St. Patrick's Parish Hall (2702 Broadway, downstairs; elevator available).

March 10 – ECC bi-monthly General Meeting (see related article), 7-9 p.m. at the Police Officer's Guild, 2517 Eastlake Ave. E. (Barb Zegar, 325-2139)

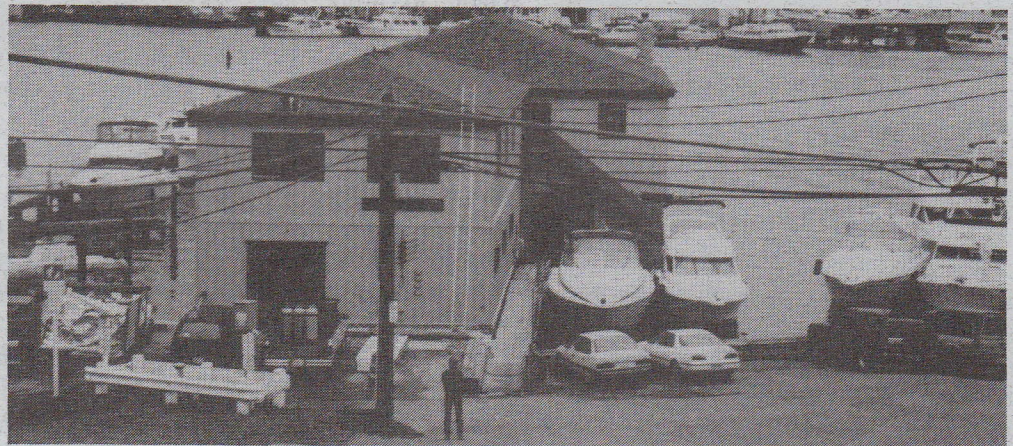
March 12 – Eastlake Tomorrow Steering Committee reviews planning recommendations for neighborhood feedback, 5:15-7 p.m., Hart Crowser, 1910 Fairview Ave. E. (322-5463)

March 21-22 and April 4-5 Good Turn Park work parties, 9 to 3 p.m. (Fairview Ave. E. a block south of U Bridge) Wear gloves, bring shovel (322-5463)

March 26 – Review the preliminary detailed design of the Franklin Avenue "Green Street" between Rogers Playfield and Seward/TOPS school, 7-9 p.m. at the Police Officer's Guild, 2517 Eastlake Ave. E.

March 31 – Regional Transit Authority unveils Eastlake light rail alternative route for comment, at Pocock Rowing Center, 3320 Fuhrman Ave. E. (tentative location). 5 p.m. open house; workshop 6-9. (Kara, 689-7425)

April 2 – ECC garden and tree meeting with Carl Elliot of Seattle Tilth (see related article), 7-9 p.m. at the Seattle Police Officer's Guild, 2517 Eastlake Ave. E. Carol Eychaner, 324-1716.



Are these structures or are they vessels? This rowing club was recently floated onto Lake Union.

Crew club bypasses City permits

The floating rowing club recently moved into Eastlake is in violation of Seattle's land use code and the owner must apply for permits with the City's Department of Construction and Land Use (DCLU).

Both the Eastlake Community Council and a nearby condominium association have asked DCLU for a clarification of the Feb. 3 shoreline violation notice.

Lake Union Crew club owner Rome A. Ventura, an Eastlake resident, asked DCLU to withdraw the notice of violation. Her request was scheduled to be reviewed late February.

The approximately 18,000 square-foot facility was moved to Lake Union at 11 E. Allison St. in mid January after being built at Lake Union Dry Dock.

Ventura has contended that the rowing club is two vessels — not structures — and as such is not regulated by DCLU. However, in the notice of violation DCLU asked Ventura to submit permits required for structures.

The facility is being used afternoons by the Holy Names Academy, a crew of 68 girls which Ventura coaches. Ventura said between 25 and 30 adult rowers are using the facility mornings.

Members of the community council are concerned about the precedence this develop-

ment could set. Because Ventura bypassed the regular permit process for shoreline development (by contending the club was two vessels), it appears the facility may not be consistent with land use development standards. In addition, neighbors have been denied public comment which takes place through the permit process.

Impacts to nearby residents and businesses include:

- ✘ the obstruction of a public right of way in Lake Union. The facility encroaches into the E. Allison Street end waterway.
- ✘ parking congestion. A prior permit approved only eight parking spots for the site. Ventura said she believes there are 13 parking spots.
- ✘ uses over water which may not be permitted. Any water-dependent part of a facility, such as boat storage, can be over water. Other uses, such as a lounge, might not be permitted over water.

Ventura said she understands neighbor's frustration that the City doesn't have a review process for commercial vessels. She said she gave the City information about her rowing facility a year and a half ago, and was given the go-ahead for her project.

Eastlake Community Council

Board Members

Barbara Zegar
President

Carol Eychaner
Vice President

Kathy Tucker
Treasurer

Mialee Jose
Secretary



Kathy Tucker
Editor

The Eastlake News
is a bi-monthly
production of
the Eastlake
Community Council, to
inform the
community of issues con-
cerning the Eastlake area.

Send stories, letters and
ideas in care of the Eastlake
News to: 117 East Louisa St.
#1, Seattle 98102
Or call Kathy Tucker at
860-5934.

Plant sale and gardening event

Seattle Tilth's Carl Elliot, a gardening expert on the radio program KUOW, will speak at a neighborhood meeting and plant sale April 2, from 7-9 p.m. at the Police Officer's Guild, 2517 Eastlake Ave. E.

Neighborhood gardeners are asked to donate plants to the Eastlake Community Council for sale at the event. When dividing perennials, or removing extra plants, please pot them, set them aside and consider donating them for the event. If anyone is able to arrange a nursery donation for raffle

or auction, or has a plant from their yard to donate, please call Carol Eychaner at 324-1716 or Kathy Tucker at 860-5934 (will be out of town March 7-21).

The event, planned by the ECC, will fo-

cus on ecologically-friendly gardening and information on street trees. Carl Elliot and another, yet unnamed, speaker will hold the floor from 7-8 p.m. The plant sale will follow from 8 to 9 p.m.

Donated plants will be sold at reasonable prices. Any funds raised by the ECC will go toward general operating costs for the council, which include the production of The Eastlake News, and photocopy and mailing expenses.

Topics discussed during the speaker portion of the meeting could include: organic

methods for pest control and natural fertilizers; gardening tips; container gardening; and tree planting and pruning.

Bring your gardening questions and your donated plants for this fun event.

General meeting to look at development plans

The ECC's March 10 general meeting will offer updates on several current projects: the floating rowing facility at East Allison Street, development of the property (now a parking lot) abutting Pocock Rowing Center, Seward School and others. Your input is solicited on all the projects. Please join us from 7:00 to 9:00 p.m. at the Police Officers' Guild, 2517 Eastlake Ave. E. See you there!

Late Night Dining

Southern European
Cuisine

Specializing in Tapas
& Pasta

Available for banquets
and parties of all
kinds



Hours

Weekdays: 5:30 p.m. - Midnight
Friday & Saturday: 5 p.m. - 2 a.m.
Sundays: 5 p.m. - Midnight
Closed Mondays

Free garage parking
2366 Eastlake Ave. E. - 324-3160

When was the
last time you
felt really
good?

Eastlake loses longtime businessman, friend

The neighborhood is saddened at the death of Wayne Ross, a longtime business member of the Eastlake Community Council. We share his family's loss; few ever have done more for this neighborhood. At our request, his son Jim prepared this reminiscence:

Wayne Ross came to Seattle in 1946 after growing up in Idaho. With a love for the water and a fascination for electronics, he set up a small marine radio repair shop on the south end of Lake Union. Soon he and his wife Joan, an English war bride, rented a small houseboat at the foot of Roanoke Reef. It was here they started raising the first of their children, Dave, who was just a few months old. As Dave became a toddler, he found a real thrill in the splash that a pot or a pan from the kitchen made as it hit the water. After several months of unsuccessfully trying to break this habit, Wayne and Joan decided to leave the lake for a house with a yard that Dave and his future brothers and sisters could run and play in.

During this time Wayne started his own business, Ross Laboratories, building depth sounders and fish finding equipment. He rented some space at Leschi on Lake Washington, where the company grew and became well known for its products.

As time went on, Wayne realized that he would like to have his own building for his growing company and came back to Lake Union looking for the right spot. In 1960 he found a group of small houses on Fairview Avenue just south of the University Bridge. As each house in the quiet little neighborhood became available, Wayne would refinance his family home (much to his wife's dismay), and purchase the house as a place to someday construct a building.

Finally in 1964 the plans were drawn and construction begun on the first phase of Ross Laboratories' new home. In September the move into the brand new building was made and Wayne was back on Lake Union where his career began. As the company expanded, a

new addition was added in 1970 with a nice view of the lake and its activities.

In 1971 Wayne purchased the "Golden Dolphin" as a test and demonstration platform. The boat became a familiar site on the lake to local residents as she went back and forth, testing new and sometimes unusual looking products for the company. It would not be unusual for someone to call or drop by and ask, "What is that anyway?"

As one who always shared and enjoyed other people, Wayne offered the Golden Dolphin for many community events, such as the Special People's Cruise, ARC Swimathon, and picnic cruises for the Eastlake Community Council.

Wayne was certainly at home on the lake and always enjoyed its beauty and the people around it. When a small fruit tree appeared vandalized in his yard by the boat, he was quite upset. But when he found out that it was a local beaver, everything was "OK" because it was his home too.

Eastlake Chiropractic Center

Massage · Acupuncture
Expert Care for Auto, Work & Sports Injuries



206-324-8600

1/2 mile south of University Bridge
2722 Eastlake Avenue East, Suite 360

No charge for initial consultation!



Dr. Lincoln Kamell

Preferred provider for: King County Medical,
Blue Cross, Group Health, Virginia Mason & others

Residents, businesses do park 'Good Turn'

The Good Turn Park expansion at the Martin Street end is doubling the park's size and adding to the Lake Union site a sitting and play area, picnic table, trails and plantings, wheelchair access and improved parking.

The original park was donated by the abutting landowners. Now with their additional support and donations from others (and the City Neighborhood Matching Fund), the expansion is ready for planting and trails.

Special thanks to the Bergren family (represented by Eric Jarvis, whose investment business is at 3147 Fairview) for spearheading the original park and donating topsoil, plants and more for the expansion.

Thanks to: Merlino Construction (excavation and drainage); Madden Construction (hailed and disposed debris); Army Corps of Engineers (donated and delivered

vintage cedar logs); the Boatyard (stored and moved logs); Marenakos, Inc. (donated and placed huge rocks); Hoge Construction (hauling); and many work party volunteers. Designer Tom Zachary and construction manager Will Stewart worked for much less than their regular pay.

We are seeking plant donations which fit design requirements. Let us know if you could arrange a nursery donation!

Join us at the final work parties March 21-22 and April 4-5 (9 a.m. to 3), and/or send a tax-deductible check to Olmsted-Fairview Park Commission, 85 E. Roanoke Street, Seattle 98102 (indicate that it is for Good Turn Park). We can pick up donations; call coordinator Chris Leman at 322-5463; cleman@oo.net.

The park expansion is a joint project with the Eastlake Community Council.

Opportunity to comment on transportation recommendations

A rough draft for the transportation section of the Eastlake neighborhood plan is now available for comment (see it on the web site, <http://www.oo.net/et>, or call 322-5463 for a copy). Any recommendations will be widely distributed in April along with those of the other planning teams, but early comments are welcome.

To reduce speeding and collisions and improve pedestrian safety, the planning team proposes: (1) a center turn lane on Eastlake Avenue south of Boston Street; (2) a safer intersection at Boylston/Newton/I-5 on-ramp; (3) pedestrian half-signals (stop lights) at the Allison, Newton, and Howe crossings of Eastlake Avenue; (4) disability-friendly crossings of Eastlake Avenue at Louisa, Roanoke, and Lynn; (5) a green arrow for left turns westbound from Lynn to Eastlake Avenue; and (6) re-establish pedestrian access on the north side of the Roanoke Street bridge.

For pedestrian walkways, the planning team proposes: (7) a Fairview shoreline walkway south from NOAA, subject to support from the abutting landowners; (8) sidewalks on both sides of Allison, Hamlin, and Fuhrman between Eastlake and Fairview; (9) sidewalks along parts of Fairview between Hamlin and Fuhrman; (10) continue the cornerstones art in additional street corners; (11) stairs and wheelchair-accessible walkways under the I-5 viaduct between Franklin and Lakeview; (12) explore ways to connect the Edgar street-end with Fairview Ave. E. north to Hamlin; and (13) explore a possible platform/walkway on the west side of Fairview

at the E. Boston street-end.

To reduce noise from I-5, the planning team proposes: (14) retrofit the ship channel bridge with sound absorbent panels; (15) noise walls just north of Shelby St.; and (16) further reduction in the hours of express lane operation.

Transit proposals by the transportation

The transportation planning team's tentative rail recommendations are: (19) light rail on the surface of Eastlake Avenue will harm existing businesses, traffic, parking, and neighborhood livability, and should be strongly opposed; (20) An additional bridge (light rail or monorail) to cross the Ship Canal, or a tunnel portal, will harm properties and homes and add noise, and should be strongly opposed; (21) addition of rail to I-5 and the ship channel bridge, if it produces a net reduction in noise and vibration and does not produce a widening of the bridge, should be explored; (22) a monorail line on Eastlake Avenue poses serious concerns of view blockage, privacy, blight, and loss of property values; (23) a Boylston Avenue E. monorail route, if it produces a net reduction in noise and does not harm existing properties, should be explored; (24) a light rail station in Eastlake should be opposed without strong protections against inundation by commuters arriving by car and by up-

zoned commercial development; and (25) potential impacts of one or more monorail stations must be closely examined before such a station can be recommended.

The transportation planning team welcomes comments on any of the above recommendations, which must be approved by the Eastlake Tomorrow Steering Committee to move into the neighborhood plan. Send comments to Eastlake Transportation, 117 E. Louisa St. #5, Seattle, WA 98102. To get involved, contact planning team consultant Chris Leman, 322-5463; cleman@oo.net

Eastlake Tomorrow bears early fruit

Eastlake's neighborhood planning process has attracted City praise for its ability to get early results.

Particularly satisfying have been the improvements on Eastlake and Fairview avenues that, with the dedicated efforts of hundreds of volunteers, we have worked out with the Seattle Public Utilities Department as a part of its two-year sewer expansion project which has just concluded.

These have included the dreamboats and cornerstones art projects; the north gateway park rehabilitation; the median islands that attractively improve safety on northern Eastlake Avenue; and the walkway and plantings (including crabapple and serviceberry trees) extending along Fairview in front of NOAA.

Let's work to make sure that Eastlake Tomorrow continues to be as fruitful!

planning team shared with the Main Street planning team include to: (17) establish that express buses that use Eastlake Avenue will stop at least once in the neighborhood; and (18) increase bus shelters and decorate them.

The planning team has devoted considerable analysis to recent light rail and monorail proposals. The Eastlake Tomorrow Steering Committee has approved a Feb. 4 scoping letter to the Regional Transit Authority prepared by the transportation and community design planning teams (available on web site, or by calling 322-5463).

Franklin green street design moves to final touches

Preliminary detailed designs, funding and maintenance plans for the Franklin Avenue "green street" will be presented for the community and TOPS review and comment March 26, 7-9 p.m. at the Police Officer's Guild, 2517 Eastlake Ave E.

A committee of Eastlake residents, TOPS parents and School District representatives began putting the final touches

on the Franklin green street design, located between Roger's Playfield and the Seward/TOPS school, mid February. This block of Franklin has been closed to vehicles since the 1940s (except for parking), and it will be formally designated a green street with the adoption of Eastlake's neighborhood plan.

The green street will be used by the community and the

school for recreation and open space; vehicles (except emergency vehicles) will be prohibited from using the street.

A concept plan for the green street has already been approved by Eastlake Tomorrow, the Eastlake Community Council, TOPS and the School District. Community and school members are working on design details, including the types and sizes of trees that will

be planted, the materials that will be used on the retaining walls, overlook and hard surface areas, and the artwork, bench and kiosk design. Options for funding and maintaining the green street are also being developed. It's not to late to let your creative juices flow! Please call Carol Eychaner at 324-1716 to participate in committee meetings and for more information.

Design Preferences help shape goals and recommendations

The Community Design planning team got an earful of Eastlaker's likes and dislikes at its January slide presentation of buildings and streetscapes. Although the team is still evaluating the results of the discussion and ratings, the event helped shape preliminary design goals for the community.

Some of the preliminary design goals are: to continue Eastlake's architectural diversity and human scale; to promote the renovation and careful expansion of existing structures that evoke Eastlake's character, and support conversions (such as from single family to multifamily) that avoid demolition; to increase housing on Eastlake Ave. at strategic locations; to preserve and enhance public and private views throughout Eastlake (both near/foreground and distant views); to improve our streetscapes and alleyways in a way that

reflects Eastlake's character and promotes interaction among community members; to improve Eastlake Avenue as a pedestrian-friendly street by minimizing the number of driveways and parking areas accessed from the street; to design and site commercial and residential buildings that are compatible with each other, especially when on adjacent sites; to have new development reflect Eastlake's existing pattern of small, 1 to 2 lot development; and to increase bio-diversity in Eastlake and foster noise absorption in landscape and building design.

When asked how much change there should be in Eastlake, most people indicated there should be "strategic" change, with others supporting no, low or medium change; no one thought there should be a lot or complete change.

With the help of its consultants, Aidan Stretch and Davidya Kasperzk (of Sustain-

able Development Group), and assistant Sharon Rose Vonasch, the design team will continue to refine Eastlake's design goals and make recommendations for accomplishing these goals.

The design team also has developed boundary and urban village designation recommendations for Eastlake, and is reviewing the potential to restore our cobblestone streets. It is working with the Open Space planning team to identify view corridors and public access along the shoreline.

The results of the design team's work will be available for review and comment at the upcoming Eastlake Tomorrow planning options fair. Call Dave Dykstra (325-9101) or Carol Eychaner (324-1716) for more information, and to help develop community design recommendations.

Planning recommendations take shape

The Eastlake Tomorrow steering committee and the six planning teams are analyzing the results of surveys and public meetings as they prepare a document of options and recommendations for comment. This publication will be distributed in April to residents, employers, and business and property owners. Public meetings will be scheduled, probably the week of April 23. Early draft recommendations are available in public review files at Lake Union Mail (117 E. Louisa St.) and the Floating Homes Association (2329 Fairview Ave. E.) and on the web site, <http://www.oo.net/et>.

With your April input, a neighborhood plan will be crafted. About June 15 the plan is scheduled to go to the City Council, which

will hold a public hearing. Write now with suggestions (Eastlake Tomorrow, 117 E. Louisa St. #1, Seattle 98102); watch for the April mailing with its notice of meetings; or call 322-5463 to get the meeting schedule.

Eastlake Tomorrow is conducted under City contract with the Eastlake Community Council (ECC), and run by a steering committee whose membership includes one seat each for apartment owners, homeowners, renters, office owners, social services, the six planning teams, and the following organizations: Eastlake Business Association, ECC, Floating Homes Association, the Options Program at Seward (TOPS), and Friends of Lake Union/Olmsted-Fairview Park Commission (shared seat).

Business comments, volunteers needed

The Main Street planning team, consisting primarily of business owners, asks for comment on its recommendations to revitalize the business district. For promotion, the team proposes to (1) provide prospective businesses a folder on the Eastlake market area; (2) recruit businesses the neighborhood needs; (3) publish a map guide; and (4) initiate more media mentions businesses.

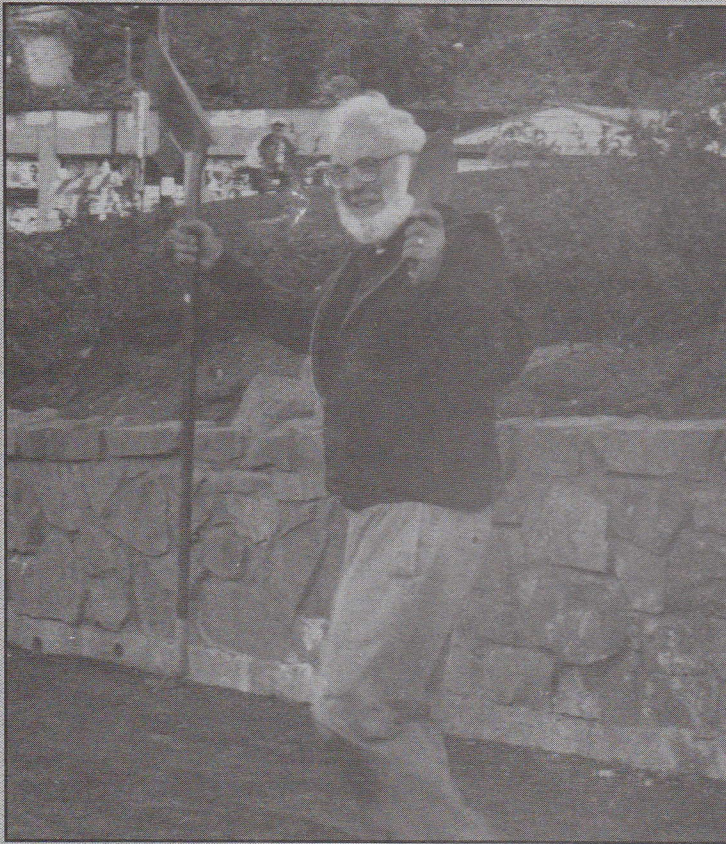
To enhance the streetscape, the team proposes to (5) install a litter cans at bus stops; (6) install and decorate bus shelters or benches; (7) expand cleanup efforts; (8) resist A-board prohibitions (but work for safe, attractive design); (9) encourage light strings or neon; (10) plant trees (without visually blocking businesses); and (11) install information kiosks.

Business-related transportation proposals include (12) moving a block north some HOV-only parking spaces interfering with retail parking on the east side of Eastlake Avenue between Lynn and Louisa streets; (13) establish that all express buses using Eastlake Avenue stop at least once in the neighborhood; (14) install planted medians in the Eastlake Avenue center lane when supported by abutting property owners; and (15) explore reducing the hours or dropping entirely the peak-period parking ban on Eastlake Avenue.

The Main Street planning team wants reactions to the above and other suggestions for strengthening the business district. Recommendations are tentative until they receive approval by the Eastlake Tomorrow steering committee. Volunteers are needed on many of the above mentioned projects. Write to Main Street, Eastlake Tomorrow, 117 E. Louisa St. #5, Seattle 98102.



117 East Louisa Street; M-F 9-6, Sat 10-3



Kingsley Joneson, past president of the Portage Bay/Roanoke Park community Council helps with the North Gateway project.

North Gateway finishes Phase 1

The North Gateway team is proud to announce the completion of Phase 1, the landscape portion of the project. Many thanks to the 30-plus volunteers from the Portage Bay/Roanoke Park and Eastlake communities who came out over three chilly November weekends to help, providing well over 250 hours of volunteer labor. More than 5,000 plants, bushes, and trees were carefully planted to enhance and improve the landscape of this long-neglected area.

Talented Landscape Designer Shane DeWald of SeaTrans, along with the knowledgeable, committed, and fun Seattle Transportation Landscape Crew, focused and moving throughout the project. Project Manager Pamela Miller has been an accessible and enthusiast supporter of the project since its inception. The satisfaction of a job well done was shared by all who participated, and will be for years to come. If you have not done so already, please take a look and enjoy your new neighborhood green space.

The NorthGateway, the triangle formed by the intersection of Eastlake, Harvard, and Allison streets, will serve to provide a more formal entrance to the Portage Bay/Roanoke Park and Eastlake communities. The Project Team describes this completed phase as "setting the stage" for more to come. For Phase 2 we are continuing to gather and compile community input for further development of the area. Installations large and small are being imagined. Virtual waterfalls, artsy neon lighting, traffic sound meters, a "cone of silence," a girlfriend for the Fremont Troll, safety lighting, a fish wearing trousers and carrying a watering can are among the wonderful creative ideas being suggested. Please contact Ann Turner (323-1432) to learn more about becoming involved in this important, yet infinitely cool, neighborhood improvement project.

Eastlake ponders the monorail

In late January neighbors met at the Seattle Police Officer's Guild to discuss monorail issues. The ECC, the Eastlake Business Association and the Eastlake Tomorrow Transportation Planning Team hosted. Invited guests were Seattle City Councilmember Richard McIver, chair of the Transportation Committee, and Dick Faulkenbury, principal drafter of the Monorail Initiative and founder of Friends of the Monorail. From the excellent turnout (50+ people were in attendance), it was apparent that the monorail issue is a hot topic in our neighborhood.

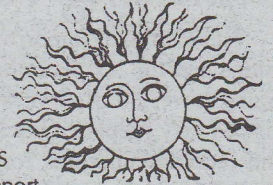
Major issues discussed at this meeting were:

- ✕ Consensus that the monorail should not run on Eastlake
- ✕ Noise impacts/environmental impacts
- ✕ Continuation of present bus service
- ✕ Running the Monorail along Boylston Avenue (a proposal by Jules James of Lake Union Mail)
- ✕ A Monorail station
- ✕ Management by the Public Development Authority (PDA)
- ✕ Successful integration of the monorail with light rail

The ECC is preparing a summary of the meeting for distribution to those in attendance and to any other interested parties.

Karen Boyd, L.Ac.

Licensed Acupuncturist



Treatment of Chronic Pain / CFS
Addiction/Recovery Treatment Support
Healing for the Body / Mind / Spirit

Eastlake Meridian Acupuncture Clinic (206) 860-1552
2366 Eastlake Avenue East, Suite 326 Seattle, WA 98102

Your Eastlake Realtor

Living and Working in your Neighborhood

Call and Order your Free Report: "The Ten Dumbest Mistakes Smart People Make When Buying or Selling in the Eastlake area"



Brian Lavery

RE/MAX NW

206.528.4433

blavery@remaxnw-seattle.com

Spotlight on land use

The following are some of the Eastlake development projects that are being reviewed by the Seattle Department of Construction and Land use (DCLU) or are in the early pre-application phases of development. The description includes the address, the master use permit (MUP) number, the types of City decisions that are required (SEPA is environmental review), and the status of the project, to the extent they were known at the time of the publication of the Eastlake News.

Rowing Facility, 11 East Allison: Over-water floating structures for a rowing club near and in the Allison street end. The structures appeared on the site mid-January, and the ECC and community members submitted concerns about possible Code violations and the absence of permits. DCLU issued a Notice of Violation on

2/3/98 citing the owner's failure to obtain required permits and possible violations of the use provisions and development standards of the Land Use Code. See related article on page 1. DCLU contact: Molly Rice, 386-1987. (Enforcement file #SH980165)

Decker Project, 3300 block of Fuhrman (parking lot east of the Pocock Rowing Center): Potential 11,000 square foot, commercial building with three stories and a daylight basement. Permit application has not yet been submitted to DCLU but developer is discussing project with community. Will be reviewed at ECC's General Meeting March 10. Community contact: Carol Eychaner, 324-1716.

Pier Expansion, 2700 Fairview (at the Edgar street end): Proposed expansion of an existing pier that is accessory

to an existing apartment building; pier length will be increased to 103 feet, four finger piers will be added, and a total pier size will be 899 square feet. SEPA and shoreline decisions required. Formal comment period ends March 6. DCLU contact: Tom Slade, 233-7193.

Merrill Project, 1938 Fairview (corner of Newton and Fairview): Proposed 44,315 square-foot office building with 43 parking spaces. SEPA, design review and shoreline decisions required. Formal comment period ended Oct. 31. DCLU is now reviewing the project. DCLU contact: John Shaw, 684-5837. Community contact: Dennis O'Brien, 328-2884, email — obriend@scn.org. (MUP #9701529)

Pharaoh's (formerly Bogey's), 1540 Eastlake: Retroactive request by the property owner to eliminate 13 code-required parking stalls (the required parking was originally provided on an adjacent site but was eliminated when that site was developed with a mixed use building). A

variance decision by DCLU is required. Formal comment period is over; ECC submitted written concerns and requests for more information. DCLU requested the applicant to document the ability to provide required parking spaces through leases on other properties within 800 feet. Meanwhile, DCLU reports that Pharaoh's has gone bankrupt and that the DCLU review is on hold until the parking information is submitted and the property owner decides what use will replace Pharaoh's. DCLU contact: Stephanie Haines, 684-5014. Community contact: Carol Eychaner (ECC), 324-1716. (MUP #9704477)

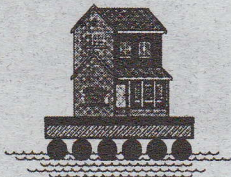
Comments on the above projects can be submitted to DCLU, 710 Second Ave., Suite 200, Seattle, WA 98104-1703 or faxed to 233-7901.

Comments should be provided during the formal comment period, but will be accepted by DCLU any time before the decision is made. If you have the address or MUP number of a project, you can call DCLU at 684-8467 for project information.

Seattle public utilities seeks volunteers

Seattle Public Utilities (SPU) is creating two new citizen advisory committees: the Water Systems Advisory Committee and the Creeks, Drainage and Wastewater Advisory Committee. These 12 member committees are being created to advise the Director of Public Utilities on issues affecting the City's water systems. Six of the citizens appointed will serve a one year term and six will serve a two year term. For more information, or to express interest in serving on the committee, call Beth Doglio at 233-7164 by February 27, 1998.

Floating Home Insurance



FINALLY!

A BETTER FLOATING HOME INSURANCE POLICY.

It has taken 22 years and the backing of the oldest marine insurance company in North America to get it right... and to get it priced right too!

1. Very competitive rates, far superior coverages
 2. Agreed value on total loss. No depreciation.
 3. Personal property covered ashore, or in storage units.
 4. Automatic coverage for adjoining floats, structures
 5. Freeze damage covered. Flooding covered.
 6. High liability limits available.
 7. Medical payments included.
 8. Salvage coverage included.
 9. Flexible deductibles to lower premium.
 10. Hired workers covered while at floating home.
-and more!

CONTACT THE BOAT INSURANCE AGENCY AT 285-1350 FOR DETAILS AND A QUICK COMPARISON (conveniently located at 1500 Westlake on Lk. Union)

This exclusive program is brought to you by Cigna Insurance and the Boat Insurance Agency, Inc.

Lake Union Storage

5'x9'x8' high

\$58.00 per month

Call Phil 425/643-5320

Business Notes

By Chris Leman

Those Ty Beanie Babies are jumping off the shelves at Cards, Gifts, Etc. (2366 Eastlake Avenue, 329-9202). Co-owner Cindy Grayson welcomes calls on her latest shipments of the popular, inexpensive collectibles. ...

Architect John McLaren's Eastlake practice (325-9890) includes single and multifamily homes, commercial and adap-

tive reuse and feasibility studies for a range of projects. An Eastlake resident, McLaren recently joined the board of the Eastlake Community Land Trust. ...

Welcome to Scott Comfort Salon (324-4314), a beautifully appointed hair salon in the A.W. Larson Building, 3210 Harvard Ave. ...

Condolences to the family of the late Stanley McNaughton and to PEMCO, the insurance and financial institution he led

for so many years. Like Wayne Ross, who we also lost recently (see accompanying article), McNaughton's public spiritedness set an impressive standard that should inspire future business leaders. McNaughton quietly arranged for the donation of ball playing equipment needed during Colman School's temporary stay in the Seward building. ...

Send your business news to Chris Leman, 85 E. Roanoke St., Seattle 98102.

Bus stop won't move

In December, residents of an apartment building located on the corner of Eastlake & Edgar submitted a petition to the Metro Transit Department to have the bus stop in front of their building either relocated or removed.

The reasons stated for their request were not only noise from the buses stopping in such close proximity to their front doors, but also noise, disruptive behavior and litter caused by people waiting for the bus. Metro posted a notice requesting comments, and received at least six requests to keep the bus stop at this location. Based on those requests and the fact that relocation to the only alternative spot would make the stop inaccessible to wheelchairs, Metro made a decision to leave the bus stop as is.

The ECC would like to work with the residents to find a solution to the problems they are encountering. If you have any thoughts on how this might be accomplished, please contact Barb Zegar @ 292-4235.



The Wild Iris

Original Designs in Stained Glass

Mimi Iwami

3204 Harvard East
Seattle, Washington 98102
(206) 328-0688

My specialties include custom designs in stained glass, renovations of antique stained glass, & gifts for all occasions.

G&H PRINTING

The Corner for Fine Printing



phone 329-9888
fax 324-3705

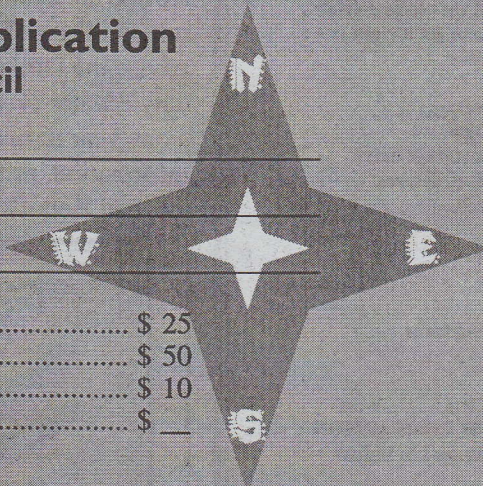
ECC Membership Application Eastlake Community Council

Name _____

Address _____

Phone _____

- ▶ Household \$ 25
- ▶ Business \$ 50
- ▶ Senior Citizen/Student/Low Income \$ 10
- ▶ Donation \$ _____



Interests

- Parks and Open Spaces
- Traffic/Parking Issues
- Building Guidelines
- Newsletter Distribution
- Fundraising
- Work Parties
- Community Art Projects
- Community Meetings

Member Status

- New
- Renewal

Eastlake Community Council — 117 E. Louisa #1, Seattle, WA 98102