

117 E Louisa St. #1
Seattle, WA 98102

FREE-Take One

Time to renew?
Your membership
expires on the month
and year printed in
your label's upper
right corner.

October 1994

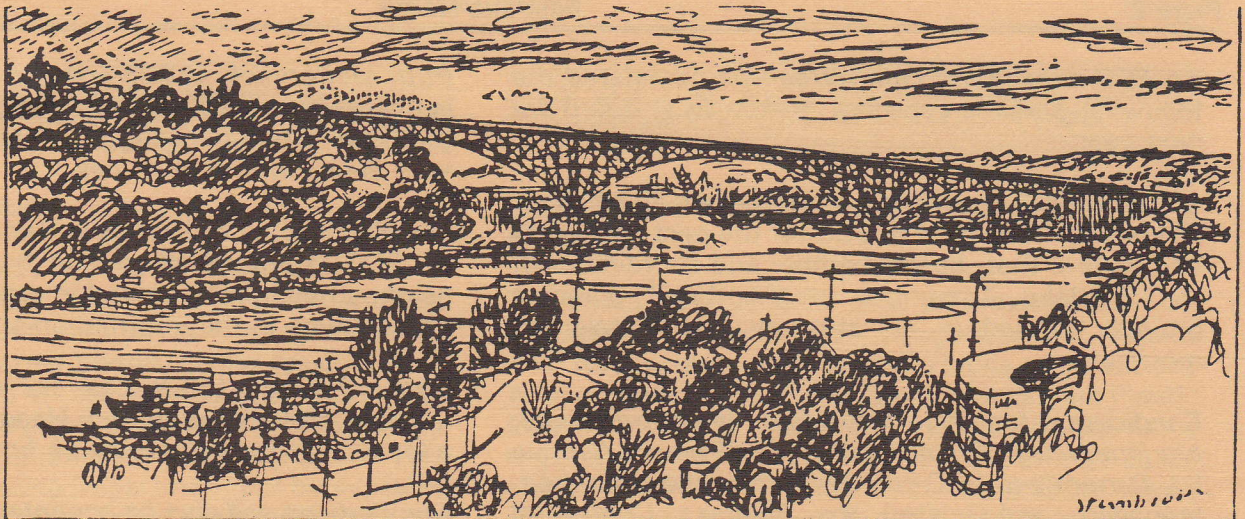
Board Members

David Huber,
President
Michael Sullivan,
Vice President
Judy Rhodes,
Vice President
Barbara Zegar,
Secretary
Surain afSandeberg,
Treasurer
John Cornethan
Joy Huber
Chris Leman
Marjorie Nelson
Steinbrueck
Joe Rodgers
Laurie Stusser
Steve Vrabel

Editor:

Robert afSandeberg

Eastlake News is
distributed free to
residents of the
Eastlake Community
and members of the
Council.



EASTLAKE NEWS

UPCOMING EVENTS

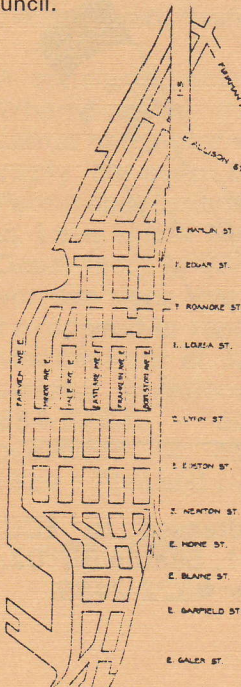
- Oct 25,** Tuesday 5:30pm-8:30pm, Seward School Gym.
SR520 Neighborhood Open House.
- Nov 1,** Tuesday at 7pm, Seward School Cafeteria.
ECC Annual Meeting with elections. See page 1.
- Nov 7,** Monday at 7:15 p.m., Pacific Lincoln Mercury (601 Westlake),
issue forum on Seattle Center (business meeting of Lake Union
District Council begins at 6:30)
- Nov 14,** Monday at 6:30 at 1915 Eastlake (Zymogenetics).
Holiday Auction at the old Hydro House. See page 3.
- Dec 4,** Sunday 2-4pm at 1915 Eastlake (the Hydrohouse).
General meeting on the Eastlake Gateway. See page 2.
- Dec 8,** Thursday at 7, 2517 Eastlake Avenue E.
Public meeting of Friends of Lake Union. See page 6.

ECC ANNUAL MEETING NOVEMBER 1

Elections, gateway, RPZ, and transportation updates

The ECC annual meeting with elections for board members and officers has been scheduled for **November 1, 7 pm** at the **Seward School Cafeteria**.

- ☛ Dues paying ECC members have been mailed official ballots for election of board members and officers; these must be returned no later than Tuesday, November 1 at our annual meeting.
- ☛ Also featured will be reports and an opportunity for public comment on the effort to establish an artistic gateway at the intersection of Eastlake and Fairview Avenues, the Eastlake RPZ, and the Eastlake Transportation Plan (see accompanying stories).



An **ECC nominating committee** has nominated the following persons to serve on the ECC board for next year:

Candidate for President: *David Huber*, (2300 Yale Avenue E.) President of ECC for the past two years and, before that, board member and coordinator of the Eastlake Tomorrow neighborhood planning project. David is an attorney and a talented musician.

Candidates for Vice President (two positions): *Marjorie Nelson-Steinbrueck*, (2622 Franklin Avenue E.) Currently an ECC board member, she originated, managed, and hosted the Eastlake Centennial Celebration in August 1993. She is a professional actress who has performed in plays all over the country.

Michael Sullivan, (2728 Fairview Avenue E., #104) Currently ECC Vice President. Michael has been a board member for three years. He represents ECC on the TOPS-Seward School Site Council and is active in park issues. Michael has graduate degrees in law and accounting.

Candidate for secretary: *Barbara Zegar*, (216 E. Roanoke Street, #B) Secretary of ECC for the past three years. Coordinates ECC membership renewals and the distribution of the *Eastlake News*. Barb works at a major accounting firm.

Candidate for treasurer: *Lorraine Hards*, (2731A Franklin Avenue E.) Eastlake resident since 1962 and apartment owner. Currently treasurer for SCORE, the Service Corps of Retired Executives, a subsidiary of the Small Business Administration.

Candidates for board positions: *John Cornethan*, (1909 Franklin Avenue E.) Currently an ECC board member, John also works as an inspector at the polls on election day and has been active in the civil rights movement. He is now retired from Seattle City Light.

Jane and Rob Kiker (shared position), (2711 Franklin Avenue E, #3) Jane is an attorney and is co-chair of the Eastlake Community Land Trust. Rob is a graduate student in architecture, has worked in industrial design, and has particular interest in architectural preservation.

Chris Leman, (85 E. Roanoke Street) Currently an ECC board member, and formerly president for four terms. Also project manager for the Eastlake Transportation Plan and co-chair of the Eastlake Community Land Trust.

Ruth McCormick, (2605 Franklin Avenue E.) Ruth is a social worker who is active in OWL, Crone, and the Older Women's League, organizations that deal with senior women's issues.

Joe Rodgers, (2231 Franklin Avenue E.) Currently an ECC board member, Joe has been active in neighborhood planning and in promoting Eastlake's participation in the information superhighway.

Cheryl Trivison, (2335 Eastlake Avenue E.) Local resident affiliated with Rich Haag Associates, Inc., a local landscape architecture firm.

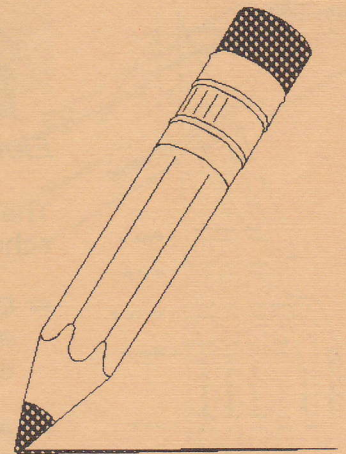
Nominations will also be accepted from the floor at the annual meeting.

GATEWAY TO EASTLAKE

Eastlake is going to have a wonderful gateway! We have received 13 excellent proposals for the art that will define our southern border. Artists and architects from around the state responded with creative, innovative ideas for the space. The jury of neighborhood artists will prepare a detailed proposal. Come to the **general meeting at the Hydrohouse** at Zymogenetics from 2 to 4 **Sunday December 4th** -- and comment on the proposal! Jury members will be there to discuss the project with you. Be there and choose the artwork that will let the world know they are entering Eastlake. Mark your calendar -- don't miss out on this chance!

NEWSLETTER EDITOR

The many activities of the Eastlake Community Council - including this newsletter - would not be possible without dedicated volunteers. The *Eastlake News* needs a new publisher. If you - or someone you know - would be interested in participating in a very stimulating community activity, please write a letter describing background and interests, addressed to ECC Nominations, 117 E. Louisa St. #1, Seattle 98102. Or call ECC President *David Huber* ☎322-2499.



EASTLAKE RPZ

Trial Period Continues

Signs for the Eastlake Residential Parking Zone have been posted since last July and parking enforcement began in mid August. We are now several months into the six-month trial period, giving residents the opportunity to see if the posted restrictions are working for us. At the **November 1 community meeting** (after the elections), a representative from the Seattle Engineering Department will be available to *answer questions* and provide information on the restrictions and *possible alternatives*. A survey will be distributed in January 1995. We would like you to come to the meeting with questions you want to see included in the survey. Evaluation and feedback during the trial period will be very important in determining the best RPZ for Eastlake.

What have we found so far? In general, people are seeing an increase in parking availability, more so on some blocks than others. Most of the concerns expressed are about the nighttime restrictions. So, one question on the survey will be designed to find out if residents want or think we need the evening restrictions. Keep in mind that the City does not offer a 2- or 4-hour restriction at night because of the resources required for enforcement. This means that the only options are unrestricted parking or parking restricted to vehicles with permit. Parking Enforcement reports that they are seeing a decrease in the number of problems but are still not able to cover the entire neighborhood every evening. However, at least once a week, all blocks are canvassed completely. It was reported that on a Friday evening in September, 68 violations for no permits were found and tickets were issued.

A couple of reminders. Permits must be visible. When possible, they are to be placed in the lower center of the rear window of the vehicle so they can easily be seen by those checking for permits. Permit applications are available in the neighborhood at Lake Union Mail or by calling the Engineering Department at 684-5086 to request one by mail. If you see signs that have been damaged and need to be repaired or replaced, report them to City Traffic Maintenance at 386-1206. The number to report parking violations is Parking Enforcement at 684-8763. Your neighborhood contacts for questions or comments are Carol Eychaner (324-1716) and Lynn Poser (323-9257).

Lynn Poser

EASTLAKE LAND TRUST

Come to the Eastlake Auction - see the historic Hydro House!

The doors open at **6:30 p.m. on November 14** as Eastlake's holiday auction inaugurates the historic and newly renovated Hydro House on Eastlake Avenue (just south of the Lake Union Steam Plant). Like the Steam Plant, the Hydro House is a registered landmark; normally it is the dining hall for employees of the Zymogenetics corporation, which is opening the main floor to the public especially for this event. A tasty selection of soups, salads, entrees, and desserts will be sold by the Hydrohouse Cafe Famous Northwest Catering Company, whose owners will be donating ten percent of the proceeds.

In both silent and oral auctions, bidders will vie for the usual wide selection of items, many of which will make excellent holiday gifts. There will be plenty of gift certificates from local eateries, auto shops, salons, and exercise studios as well as art work, computer supplies, wine, entertainment tickets, produce, and many other items too numerous to mention. To donate an item, call 322-5463. A \$5 admission (waived for those on low incomes) will be charged. Proceeds will go to the Eastlake Community Land Trust for its work in preserving affordable rents and historic old buildings. Mark November 14 on your calendar, and see you at the auction!

N.W. Coffee Crew

♥♥♥ One of the BEST ♥♥♥
 ☺☺☺ Lattes in Seattle ☺☺☺
 ♦♦♦ And it's Drive Thru ♦♦♦

2510 Fairview Ave. E

(Across from the Azteca Restaurant)

Open 5:30am to 1:00pm Daily

FREE COFFEE

Buy one coffee drink
 and receive a second
 espresso/latte/mocha **free!**

Coupon

Expires 12-1-94

NEWS FROM ECC

Will Eastlake ever get a community center or library?

In response to your suggestions on ECC's annual City budget survey, we requested that the City do a feasibility study for improved community center and library services for Eastlake. The community center planned in City documents from the 1950s was never built, the "little city hall" that serves us is in Fremont (!), and we lost our bookmobile service in 1970s budget cuts.

This year yet again, the City indicates that it is unwilling to explore either improvement. *Letters* on this situation can be directed to *Mayor Norm Rice* at 600 Fourth Avenue, Seattle 98104; please send ECC a copy. One intriguing opportunity is a new agreement between the City and the School District for joint use of schools. In the impending renovation of Seward School, could measures be taken to facilitate limited daytime public use of the library, and evening use of athletic facilities and meeting rooms? Volunteers interested in exploring this possibility may write to "Seward Joint Use" c/o ECC, 117 E. Louisa 98102.

Copies of Eastlake Transportation Plan available

A \$500 grant from the Washington State Traffic Safety Commission has made possible a second printing of the August Eastlake Transportation Plan. The plan's 68 recommendations and its careful analysis of Eastlake and Fairview Avenues are winning praise around the city, and could go a long way to make our streets safer to cross on foot, to bicycle, drive, or ride a bus on, and to do business or to live alongside.

Copies of the plan are now available for you to read in many local businesses; businesses that do not yet have a public review copy may have one delivered by calling 322-5463. The state grant allows us to distribute still more copies to businesses, docks, condominium associations, and individuals. If you would like your own copy, call 322-5463 or write to Eastlake Transportation Plan, 117 E. Louisa #1, Seattle 98102. We're eager for your reactions, and your help in making the plan a reality.

ECC letter on state route 520 expansion

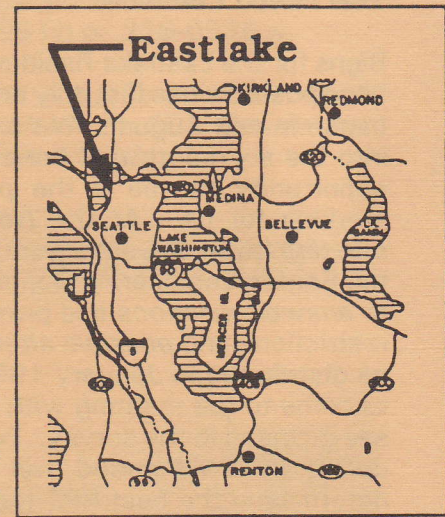
[Following are excerpts from a July 18 letter from ECC president David Huber to the Washington State Department of Transportation (WSDOT). Readers can expect to see considerably more PR of a similar nature attempting to sell the neighborhood on the expansion project, and should be aware of the strong opposition of residents of the neighborhoods closest

to SR520, not just on this side of the lake, but on the east side, where a twelve-lane toll plaza would threaten a natural area and a school. Volunteers who would like more information or would like to get involved are encouraged to write to SR520, c/o ECC, 117 E. Louisa #1, Seattle 98102.]

In a May 17 letter, the ECC board of directors conveyed its opposition to the proposals for SR520 that had just been filed by Washington Transportation Partners [WTP, a corporation]. Today, a general mailing from the project proponent has arrived that requires an immediate response, illustrating why WTP has attracted so much opposition, and why its

proposal should not receive your approval. ... As has occurred repeatedly in meetings, letters and previous publicity, WTP avoids mention or depiction of its proposal to build an additional bridge or expand the current one. By this careful omission, the mailing seeks to convince the reader that the project will "enhance" the Arboretum; the reader is left unaware that major construction and expansion would...occur there and do significant damage. The mailing's statement that the right-of-way will not need to be expanded is misleading to the reader who does not know that the existing right-of-way already contains wetlands and other previous natural areas.

The proponents' approach to community relations does not cast the New Partners program in a good light. WSDOT and the Transportation Commission should insist on a higher standard from those companies who seek to become partners with the state. Public confidence is essential to achieve consensus regarding any changes in the vital SR520 corridor; the efforts of WTP unfortunately have made it less, not more likely that such a consensus can be reached.



G&H PRINTING
The Corner for Fine Printing

2370 EASTLAKE AVE. E.
SEATTLE, WA 98102

E. LOUISA ST.

phone 329-9888
fax 324-3705

PRESIDENT'S COLUMN

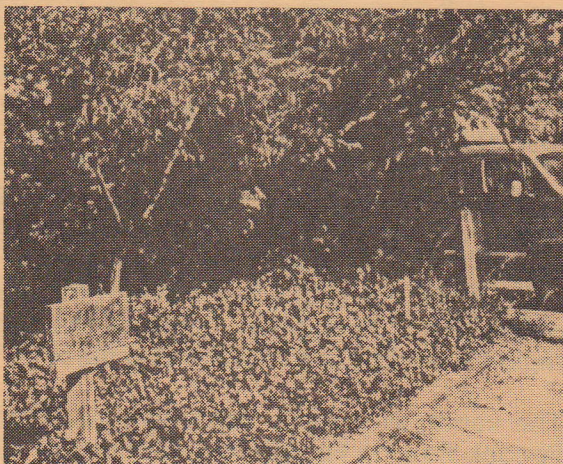
Elections are approaching and the American right to exercise the franchise of voting is again upon us at many levels. Do you vote? Does your vote count? I find it a curious thing that more people vote in national elections than in local elections. Yet it is in the local elections that an individual vote carries more weight.

We will have local policies and problems regardless of what is happening in D.C., and each of us has the opportunity to participate personally at the local level. I believe that we can exercise our own political wills on the local level in a meaningful way - by being informed, voting, and going on to participate in the local and regional issues which arise on a daily basis.

Over the past two decades the Eastlake Community Council has been a remarkably successful vehicle for citizens to direct their own affairs. In the 70's and 80's the Council's efforts resulted in local zoning laws as well as state and national shoreline protection laws. Recently Eastlake was promoted, at international gatherings by the Department of Neighborhoods, as a model for other communities throughout the world. The reason is that our "Eastlake Tomorrow" planning and action project has set the standard for other Seattle neighborhoods to be involved in the City's implementation of the state's Growth Management Act. No single individual can take credit for these achievements -- many, many people have played a role.

Now, as Seattle goes forward with the Comp Plan, as the region makes decisions about mass transit, as we all consider a "Commons" at the edges of Eastlake, it is certain that the Eastlake Community Council can provide an effective vehicle for all of us in our efforts to "make a difference".

*Roanoke
Street-end
park
before*



I have been fortunate to be the president of this Council for two years. I have seen solid victories and not very many disappointments. I am seeking another year's term as president and ask your support in the election as confirmation that Eastlake is a neighborhood where your vote counts.

David T. Huber

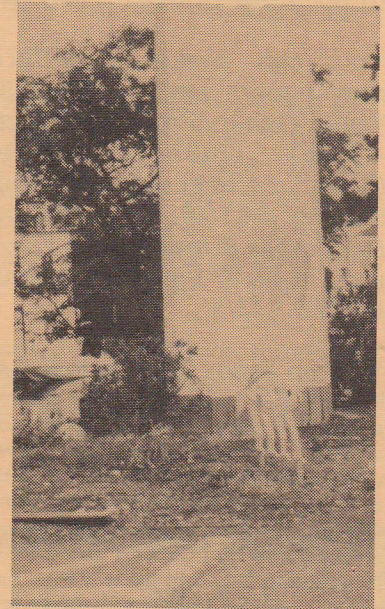
AROUND EASTLAKE

ROANOKE STREETEND PARK

*Roanoke Street-end
park after*

Volunteer needed to resurrect the park--

More than twenty years ago, the Eastlake Community Council and the Floating Homes Association established our first three streetend parks, and the Park Department agreed to maintain them. Then a few years ago, Seattle City Light devastated the Roanoke Streetend Park (see before and after photos). We need a volunteer to make sure City Light keeps its promise to

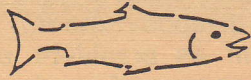


restore the park, and to make sure the Park Department keeps its promise to maintain it. The damage is so serious that a new design may be needed. Please get involved in restoring Roanoke Streetend Park to its former glory by calling 322-5463.

WSDOT: CLEAN UP I-5 RUNOFF!

Federal and state pollution laws are forcing expensive cleanup of industrial discharges and City and Metro sewer overflows into Lake Union. A glaring exception to these improvements is the Washington State Department of Transportation (WSDOT), whose uncontrolled discharge from I-5 and Aurora Avenue is the largest single polluter of Lake Union and the ship canal, threatening this major salmon and steelhead corridor. The highway catch basins do not have oil-water separators, and WSDOT's own consultants have failed to convince

DUMP NO WASTE



DRAINS TO STREAM

it to install wet vaults and grassy swales that would filter solids and heavy metals from the highway runoff piped into the lake. Metro has allowed highway runoff into pipes that dump straight into Lake Union without requiring or even asking WSDOT to pretreat the discharge, and the City of Seattle is not using its power to push WSDOT to clean up its act. Fortunately, the state Department of Ecology is considering tighter regulations. WSDOT has no immediate plans to correct the situation, pleading poverty—even though it can afford to build plenty of new highway lanes elsewhere.

You can make a difference by writing to newspapers and to the following: Ann Wessel, Water Quality Program, Department of Ecology, Box 47600, Olympia 98504-7600; and City Councilmember Jane Noland, 600 Fourth Avenue, Seattle 98104. To get involved, come to the **December 8 meeting of Friends of Lake Union**, 7-9 p.m. at 2517 Eastlake Avenue E or call Dave Moore at 325-5463.

YES on Prop. 2 For public safety--a personal view

Fighting and preventing crime are important elements in ensuring a safe and happy neighborhood. City voters will soon have the chance to approve a measure that would make it easier for police to respond to crime whenever and wherever it occurs. The downtown police headquarters--which also houses the life-giving 9-1-1 quick-response line for crime, fire, and other emergencies--is cramped and would fall apart in an earthquake. Proposition 2 would build a new headquarters and several new police stations, including a downtown precinct station within a short drive of our neighborhood. Our police officers would have the facilities that professionals deserve. Eastlake is proud to host the Seattle Police Officers Guild, in whose offices at 2517 Eastlake Avenue is housed the headquarters for the Proposition 2 campaign. If you have any questions about the measure, just drop in. But please consider voting for Prop. 2 on November 8; our lives and property--our neighborhood--may depend on it.

Chris Leman

CARDS, GIFTS, ETC.

Unique Gifts, Holiday Cards, Balloons
Office Supplies and More!



2366 Eastlake Ave. E., Suite 102
329-9202

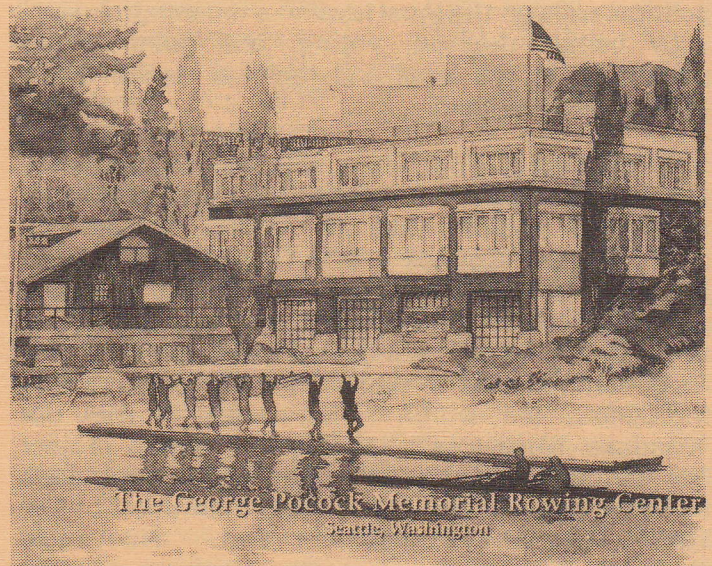
Steve and Cindy Grayson, Owners

CLASSIFIED ADS

Wanted: Coffee Cart Operator \$6/hour.
Call Ronda Clark 282-9081 h or 328-0936 w.

Classified ads cost \$3 per line. To advertize, send your ad along with your check to: ECC Newsletter, 117 E. Louisa, Seattle WA 98102.

POCOCK ROWING CENTER



"Harmony, balance, rhythm. There you have it. That is what life is about." - George Pocock, 1891-1976.

This inscription meets visitors to the new George Pocock Memorial Rowing Center, which opened last summer just west of the southern end of University Bridge. An old blackberry patch gave way to the rowing center, a dream of generations of Seattle-area rowers - a building owned and operated by fellow rowers where they can store shells, go for a row, take a shower and get to their jobs.

It is also a home port for rowing clubs and high-school crews, and a site for instructional programs aimed at disabled and inner-city youths, undertakings to help erase some of the elitist image of the sport. In addition, it serves the needs of the region's world-class rowers as a place to train.

The center is a major achievement of the George Pocock Rowing Foundation, founded in 1984, eight

years after the legendary boat-builder's death, to develop rowing in the Puget Sound region.

The bottom floor of the building is 8,000 square feet of storage space. It can accommodate up to 175 shells ranging from sculls to eights. Five bay doors open toward the water.

The 6,000 square-foot middle level features a large weight room, offices, locker rooms, a conference room, and an apartment for a caretaker. The top floor is not used by the rowing center.

George Yeoman Pocock

Seattle's own George Yeoman Pocock is one of the most revered figures in rowing. He designed and built racing shells that were so fast they dominated crew racing for four decades. As a consultant to the University of Washington, he helped bring the Northwest to the forefront of American rowing and was an able mentor to generations of winning coaches across the country. For many years, virtually every oarsman in the United States competed in a Pocock shell.



Sonya
KOMEN SALON

We are offering half off
a consultation & hair cut
by Nicky, who has just
joined our design team.

325-2376

Corner of Eastlake & Louisa



**TRAVEL
EXPERTS**

Your Neighborhood Full Service Agency

• Daily Ticket Delivery to
Office, Home & Airport

2825 EASTLAKE AVE EAST, STE 114
322-8334

MEMBERSHIP APPLICATION

Eastlake Community Council
117 E Louisa, #1
Seattle, WA 98102

This is a NEW RENEWAL membership.

DUES	
<input type="checkbox"/> Household:	\$25
<input type="checkbox"/> Senior/Student/Low Income:	\$10
<input type="checkbox"/> Business:	\$50
<input type="checkbox"/> Extra Donation	\$ _____

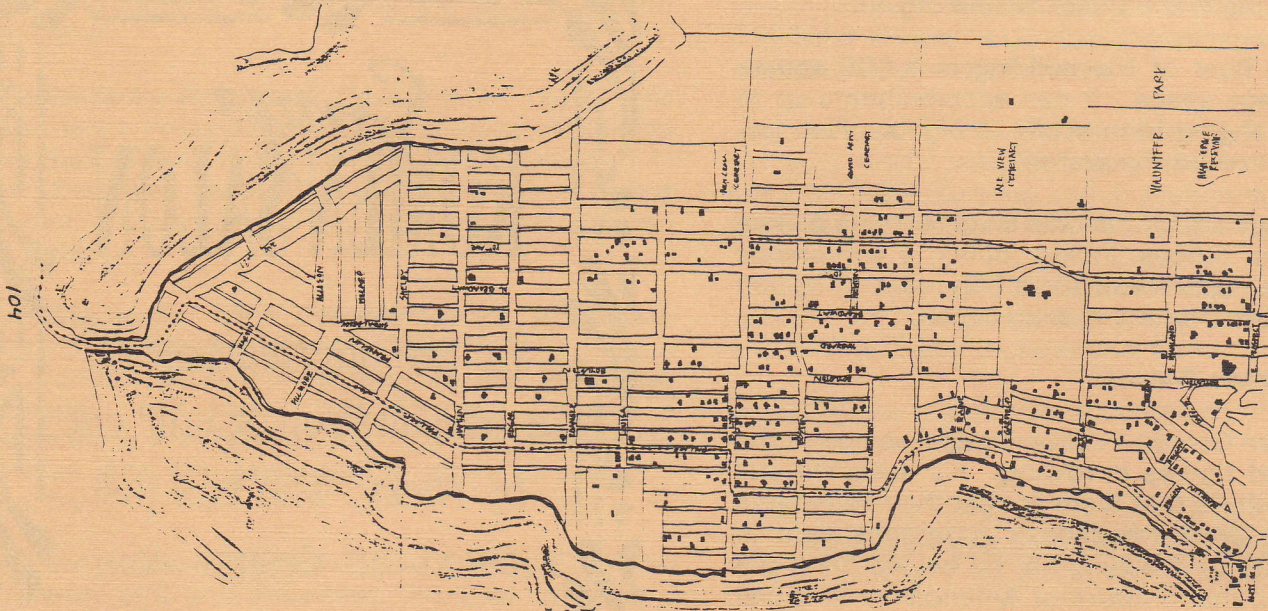
I'M INTERESTED IN:
<input type="checkbox"/> Parks and Open Spaces
<input type="checkbox"/> Traffic and/or Parking Issues
<input type="checkbox"/> Building Guidelines
<input type="checkbox"/> Newsletter Block Distribution
<input type="checkbox"/> Fundraising
<input type="checkbox"/> Work Parties
<input type="checkbox"/> Eastlake History
<input type="checkbox"/> Community Art Projects
<input type="checkbox"/> Coming to a community meeting to share and brainstorm more ideas!

NAME/S _____

PHONE _____

ADDRESS _____

EASTLAKE, YESTERDAY: A 1905 STUDY



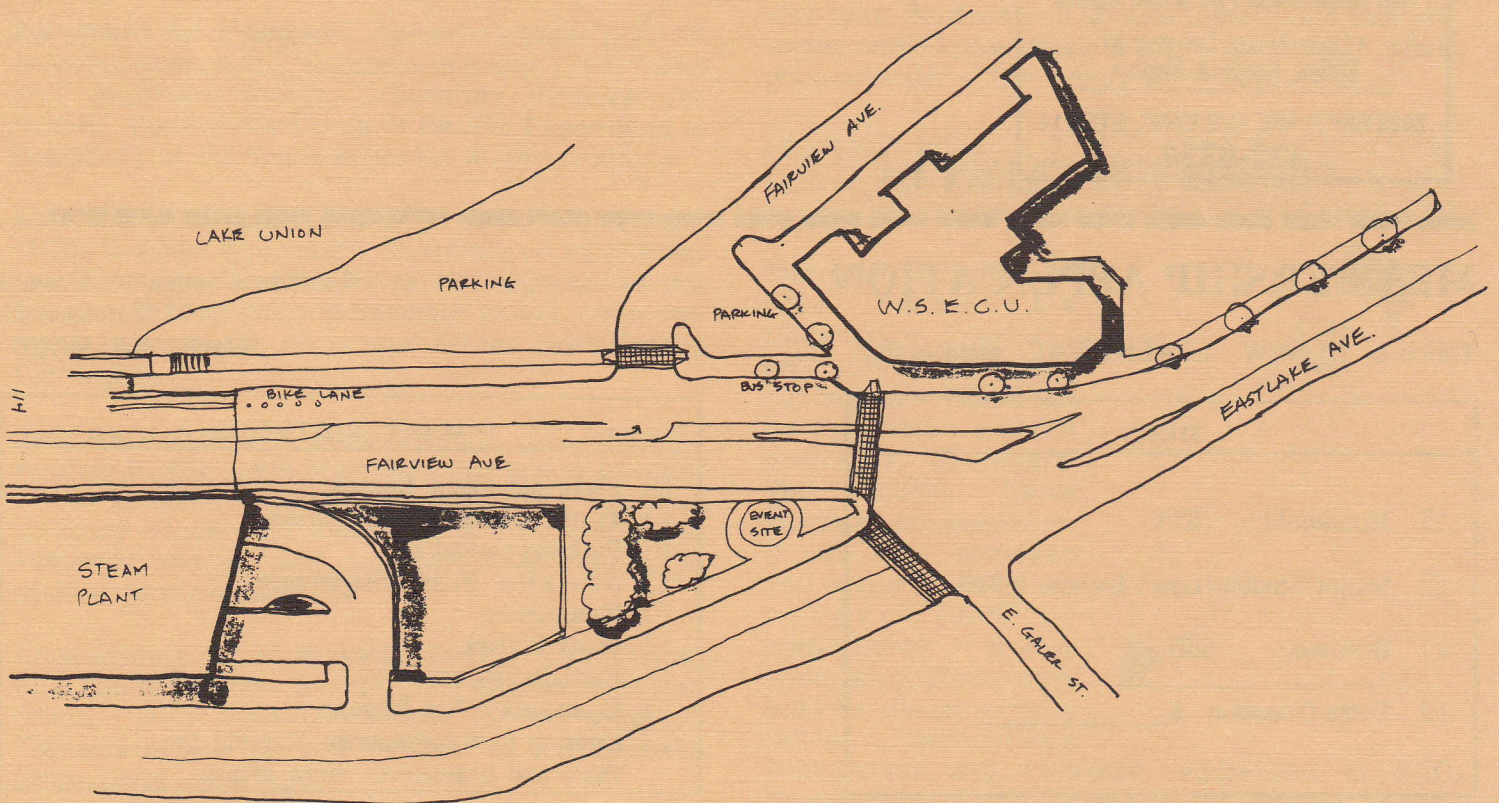
EASTLAKE YESTERDAY Please note:

- That Eastlake was not always a continuous street, with the portion south of Newton unbuilt
- That a streetcar line used to run through Eastlake
- that traffic and the streetcar on Eastlake used to bend as it went through the neighborhood, using Fairview past NOAA to Newton, then on Yale and up Lynn to Eastlake

EASTLAKE - A MOVEABLE FEAST EASTLAKE - A MOVEABLE FEAST EASTLAKE - A MOVEABLE FEAST



(from UW design studio report)



Suggested revision of intersection of Eastlake and Fairview Avenues, showing relocated bus stop [courtesy of John Schwartz]