

Eastlake  
Community  
Council

117 E Louisa St. #1  
Seattle, WA 98102

FREE-Take One

Time to renew?  
Your membership  
expires on the month  
and year printed in  
your label's upper  
right corner.

September 1994

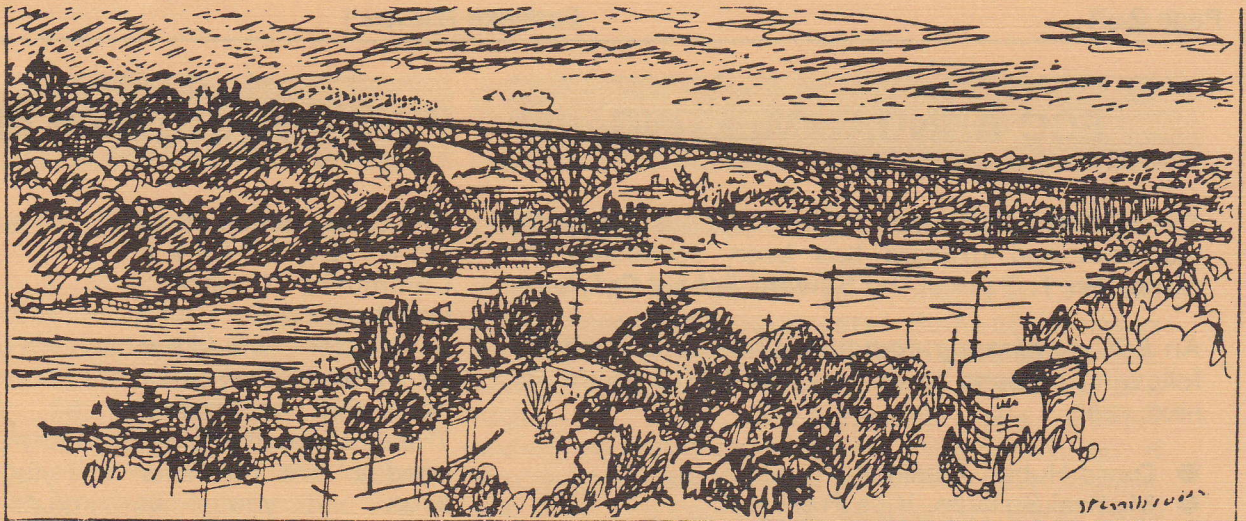
Board Members

- David Huber,  
President
- Michael Sullivan,  
Vice President
- Judy Rhodes,  
Vice President
- Barbara Zegar,  
Secretary
- Surain afSandeberg,  
Treasurer
- John Cornethan
- Joy Huber
- Chris Leman
- Marjorie Nelson  
Steinbrueck
- Joe Rodgers
- Laurie Stusser
- Steve Vrabel

Editor:

Robert afSandeberg

Eastlake News is  
distributed free to  
residents of the  
Eastlake Community  
and members of the  
Council.



# EASTLAKE NEWS

## UPCOMING EVENTS

- |                 |  |             |
|-----------------|--|-------------|
| <b>Sept 20,</b> | Local and state election--don't forget to vote.  |             |
| <b>Sept 24,</b> | Saturday at 3pm, the Pocock Rowing Center.<br>Clinic to improve conditioning for rowers.   | See page 2. |
| <b>Sept 24,</b> | Saturday at 5pm, the Pocock Rowing Center.<br>Rainier Rowing Club meeting.                 | See page 2. |
| <b>Oct 5,</b>   | Wednesday at 6:30pm, the Pocock Rowing Center.<br>Safety meeting (with pizza!).            | See page 2. |
| <b>Nov 1,</b>   | Tuesday at 7pm, Seward School Cafeteria.<br>ECC Annual Meeting.                            | See page 2. |
| <b>Nov 14,</b>  | Monday at 6:30 at 1915 Eastlake (Zymogenetics).<br>Holiday Auction at the old Hydro House. | See page 3. |

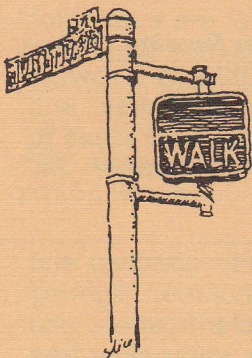
## RUMMAGE SALE WAS GREAT SUCCESS

While many volunteers were still busy arranging items and putting on price tags, buyers started arriving even before 9 am to locate the hottest deals. The commerce was soon in full swing. Even the sun soon poked through the clouds to check out what was going on. At 3 o'clock \$1100 had changed hands -- much needed funds for newsletter printing and mailing, room rentals, insurance and other General Fund needs for your Eastlake Community Council.

Thanks to all who donated items and shopped and thus supported the community. *Laurie Stusser* and *Judy Rhodes* spent countless hours to organize the Rummage Sale and made it all happen. *Thank you, Laurie and Judy!* Kudos also to all who participated during the sale, especially *Laurie and Marjorie Steinbrueck-Nelson*, and to *Diana Huber* and *Samantha Gotkin* for the home-made brownies and cookies, and to *Robert afSandeberg* for the home-made bread.

Special thanks also go to *Cornell & Associates*, *Video Quest*, and *ProBody* for letting us use their very visible and centrally located parking lot for the event.

*We'll do it again next year!*



## ECC ANNUAL MEETING

The ECC annual meeting with elections for board members and officers has been scheduled for **November 1, 7 pm** at the **Seward School Cafeteria**.

An **ECC nominating committee** has nominated the following persons to serve on the ECC board for next year:

- David Huber, President
- Michael Sullivan, Vice President
- Marjorie Nelson-Steinbrueck, Vice President
- Barbara Zegar, Secretary
- Lorraine Hards, Treasurer
- John Cornethan
- Jane & Rob Kiker
- Chris Leman
- Ruth McCormick
- Joe Rodgers
- Cheryl Trivison

Nominations will also be accepted from the floor at the annual meeting.

### Who can vote?

To be eligible to vote in the ECC annual election, you must be a registered member of ECC as of October 1, 1994. Be sure to send in a check (use the coupon on the last page of *Eastlake News*) postmarked no later than September 30, 1994 to:

Eastlake Community Council  
117 E. Louisa, #1  
Seattle, WA 98102

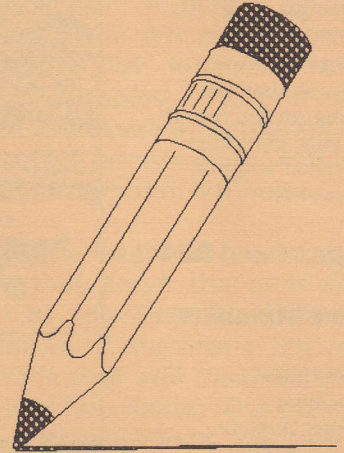
PROUD

Eastlake  
Community  
Council

TO BELONG

## NEWSLETTER EDITOR

The many activities of the Eastlake Community Council - including this newsletter - would not be possible without dedicated volunteers. The *Eastlake News* will need a *new publisher* soon. If you - or someone you know - would be interested in participating in a very stimulating community activity, please write a letter describing background and interests, addressed to ECC Nominations, 117 E. Louisa St. #1, Seattle 98102. Or call ECC President *Dave Huber* ☎322-2499 or Editor *Robert afSandeberg* ☎324-5786.



## POCOCK ROWING CENTER



Here are some of the events happening at the *Pocock Rowing Center*, an exciting new neighborhood member since their inauguration this July. The Rowing Center is located just west of the southern end of the University Bridge.

**Off-the-Water Conditioning for an On-the-Water Sport:**--Peter Shmock and Bob Schoene, Nationally acclaimed experts, are donating their expertise for a two hour participatory clinic. **Saturday, September 24, 3-5pm.** Suggested donation \$5.

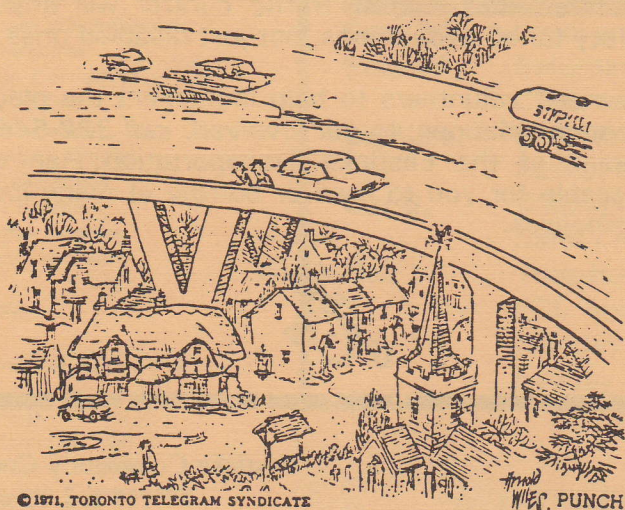
**Introductory meeting for the Rainier Rowing Club:**--Rainier Rowing Club, founded in 1994, is a rowers club limited only by the imagination, desires, and energies of the members. Come with your ideas to help build the club! **Saturday, September 24, 5-5:30 pm.**

**Safety meeting:**--A meeting to unite coaches and scullers to express safety concerns, lighting recommendations, traffic pattern clarification, and the possibility of working toward a water-skier free Union Bay. **Wednesday, October 5, 6:30-7:30pm.** Please RSVP to Susan Kline ☎323-5917. Pizza provided!

## EASTLAKE LAND TRUST

### *Historic Hydro House the Site for November 14 Auction*

To benefit the housing, diversity, and historic preservation efforts of the Eastlake Community Land Trust, the neighborhood auction will be held on **Monday, November 14** at a very special location--the 1915 hydropower station next to the Steam Plant. Zymogenetics renovated the **hydro house** and uses it for an employee cafeteria, so this is a special chance to walk around inside. Doors open at 6:30 for the silent auction, and sassy auctioneer Dick Arnold will soon hold forth; there will be an admission charge. See you there! *Business donations* to the auction are invited, and we need *volunteers* for various tasks. Contact Chris Leman at 322-5463.



"What a silly place to build a village."

### *Help out at the November 14 auction*

Volunteers are needed to help collect items (or donate something of their own) for the upcoming auction to benefit the Community Land Trust. To get involved, call 322-5463. And mark the auction on your calendar, 6:30 pm on Monday, November 14.

## NEWS FROM ECC

### UNDERGROUNDING OF UTILITY WIRES

Bothered by the power, telephone, and TV cable lines on our residential streets? Some of the newer developments in the neighborhood have buried their wires underground. In other parts of the city and region, a few neighborhoods have entirely undergrounded their wires. It's expensive, but if you're interested, draw up a plan with your neighbor and send it to Peg Oberg, Seattle City Light, 1300 N. 97th St., Rm. 115.

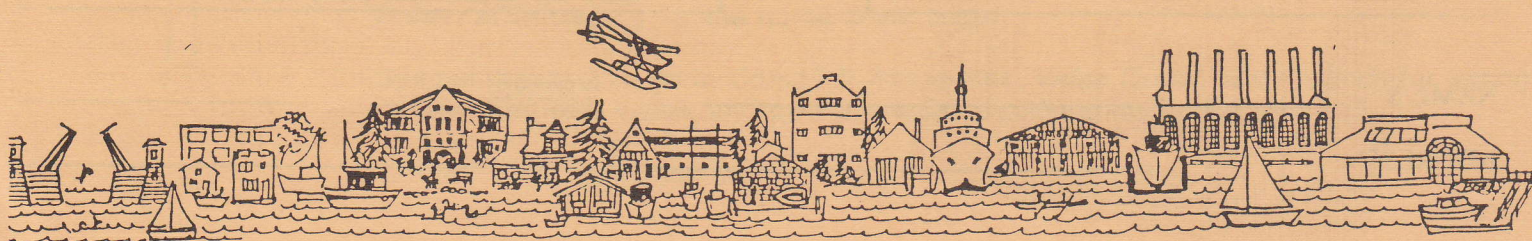
### MOVE CARPOOL PARKING TO BETWEEN ROGER AND SEWARD?

One recommendation of the Eastlake Transportation Plan is to eliminate the carpool requirement for the eleven parking spaces on the east side of Eastlake Avenue between Louisa and Lynn Streets, thus restoring the spaces for use by retail customers in the area. An idea to replace these spaces that has come up since publication of the plan is to establish a carpool requirement for some or all of the parking on the short section of Franklin Avenue that is between Seward School and Rogers Playfield.

Because these are not residential uses, this parking is not covered by our new residential parking zone. The carpool requirement would exist only in the early morning; participants (who could include Seward school staff) would register with the City in order to qualify. What do you think of this idea? **Please write us** at Parking Idea, c/o ECC, 117 E. Louisa St. #1, Seattle 98102.

### SEND US YOUR HISTORICAL MEMORIES AND ITEMS

Eastlake's colorful history is held in the memories and attics of its many longtime residents. Please take a few minutes to jot down a few paragraphs about what you **remember about the neighborhood**, or send us some **old clippings, photographs**, and so on. We will report on them in future issues of the *Eastlake News*, or keep them confidential as you wish. Send to Eastlake Memories, c/o ECC, 117 E. Louisa St. #1, Seattle, WA 98102.



## AROUND EASTLAKE

### FAIRVIEW PARK AREA WILDLIFE INFO URGENTLY SOUGHT

The City park department is in early stages of planning for the new park that will surround the P-patch at Fairview Avenue and Shelby Street. Many public meetings will occur before any decisions are made. However, the planners need more information *now* about plants, birds, fish, and other animals that you have seen on or near the park or offshore. This information could help assure that wildlife habitat is preserved rather than being replaced by a grassy desert.

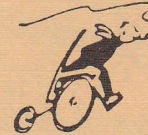
Please *jot down any sightings*, listing if possible the time of year and other details; photos or drawings are welcome. We are particularly interested in any sightings of sockeye salmon spawning in the area, and are looking for SCUBA divers willing to photograph them and other conditions offshore at this time of year. Send the information to Chris Leman, 85 E. Roanoke St., Seattle, WA 98102, or you may call the Park Department directly at 684-7158.

### EASTLAKE--A MODEL NEIGHBORHOOD FOR THE DISABLED?

The first recommendation from August's Eastlake Transportation Plan is to make our neighborhood, and Eastlake Avenue in particular, models of *safety and convenience for the disabled*. No one more deserves safe and comfortable pedestrian conditions than the disabled, who often cannot drive, and may move more slowly and with greater difficulty.

Eastlake is blessed with the headquarters of three nonprofit organizations that serve the deaf-blind, and Mark Landreneau of the Deaf-Blind Service Center here has assisted us in the many proposed intersection improvements that will make Eastlake Avenue safer for Mark and his clients. Our plan has been praised by the Multi-Service Centers (a countywide organization which serves a broad range of the disabled), and by the King County Chapter of the Washington Council of the Blind, whose letter observes that "better traffic control will ensure safety for all pedestrians, not just disabled ones."

We need volunteers to help implement the plan's recommendations; to *get involved, call 322-5463*. Copies of the Eastlake Transportation Plan are available for you to read or borrow at many local businesses.



---

## MEMBERSHIP APPLICATION

Eastlake Community Council  
117 E Louisa, #1  
Seattle, WA 98102

This is a  NEW  RENEWAL membership.

DUES	
<input type="checkbox"/> Household:	\$25
<input type="checkbox"/> Senior/Student/Low Income:	\$10
<input type="checkbox"/> Business:	\$50
<input type="checkbox"/> Extra Donation	\$ _____

I'M INTERESTED IN:
<input type="checkbox"/> Parks and Open Spaces
<input type="checkbox"/> Traffic and/or Parking Issues
<input type="checkbox"/> Building Guidelines
<input type="checkbox"/> Newsletter Block Distribution
<input type="checkbox"/> Fundraising
<input type="checkbox"/> Work Parties
<input type="checkbox"/> Eastlake History
<input type="checkbox"/> Community Art Projects
<input type="checkbox"/> Coming to a community meeting to share and brainstorm more ideas!

NAME/S \_\_\_\_\_

PHONE \_\_\_\_\_

ADDRESS \_\_\_\_\_