

117 E Louisa St. #1
Seattle, WA 98102.

FREE-Take One

Time to renew?
Your membership
expires on the month
and year printed in
your label's upper
right corner.

August 1994

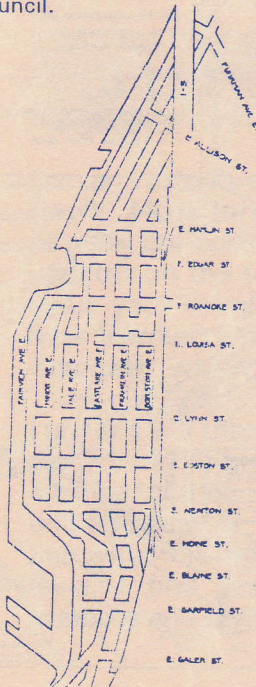
Board Members

David Huber,
President
Michael Sullivan,
Vice President
Judy Rhodes,
Vice President
Barbara Zegar,
Secretary
Surain afSandeborg,
Treasurer
John Cornethan
Joy Huber
Chris Leman
Marjorie Nelson
Steinbrueck
Joe Rodgers
Laurie Stusser
Steve Vrabel

Editor:

Robert afSandeborg

Eastlake News is
distributed free to
residents of the
Eastlake Community
and members of the
Council.



EASTLAKE NEWS

UPCOMING EVENTS

- Aug 30,** Tuesday at 7pm, 2517 Eastlake Ave. E. Public meeting on the upcoming sewer excavations. See page 2.
- Sept 11,** Sunday 9am-3pm at 2501 Eastlake Plaza. Eastlake Rummage Sale. See page 4.
- Nov 14,** Monday at 6:30 at 1915 Eastlake (Zymogenetics). Holiday Auction at the old Hydro House. See page 5.

City Council Adopts Eastlake RPZ

6 Month Trial Period Begins

After three years of petitions, parking studies, and negotiations, a restricted parking zone has been established on most of Eastlake's residential streets. Enforcement of the restrictions, which were posted in mid-July, has been deferred until mid-August to allow residents more time to purchase parking permits and employees more time to make alternative parking/transportation arrangements.

The restrictions posted on the RPZ signs are the result of a compromise plan prepared by the Seattle Engineering Department. The restrictions (which vary from block face to block face, and from daytime to nighttime) reflect the complexity of Eastlake's parking demands and problems. The intent of the plan is to open up more on-street parking spaces for residents and for short-term daytime parking, while still providing some unrestricted parking spaces for non-residents.

Importantly, the first six months of the RPZ is a trial period. During this time, the Eastlake community will "try out" the posted restrictions and determine what kind of adjustments, if any, should be made. A survey will be circulated in the fall to solicit specific information about how the day- and nighttime restrictions are working on each block. In addition, a community meeting will be held in early November to discuss the restrictions and possible alternatives (the date of the meeting will be announced in a later newsletter). "Permanent" restrictions (including any adjustments that are generally supported by the community) will go into effect shortly after the trial period.

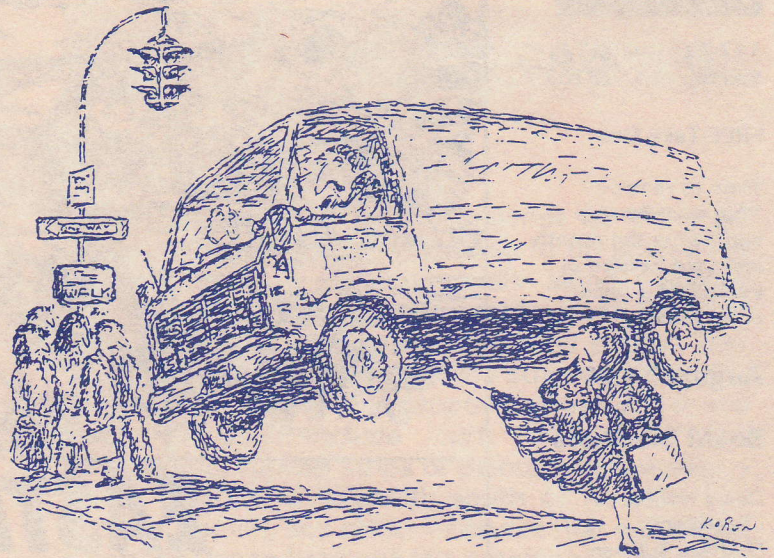
How are the restrictions working so far? On many streets, the parking availability for residents has dramatically improved during both the day and night. However, the nighttime restrictions may be too severe in those areas that have parking spaces on only one side of the street (in such areas, there is often no close-by, unrestricted parking for guests). Serafina, the restaurant at the corner of Boston and Eastlake, has also expressed concern about the potential loss of parking for customers at night. In addition, one block has opted out of the RPZ and another joined the RPZ, both by filing petitions with the qualifying number of signatures.

Community evaluation and feedback during the trial period will be critical to determining the best RPZ restrictions for Eastlake. Residents are encouraged to make careful observations of the daytime and nighttime parking conditions with the RPZ (are they better or worse?). If the restrictions on a certain block don't seem to help the parking situation, or if there is not enough unrestricted parking in a certain area, think of what alternative restrictions would work better. (Please note, however, that the City does not offer 2- or 4-hour restrictions at night because of enforcement difficulties; thus, the only nighttime choices are "unrestricted parking" or "parking restricted to vehicles with permits".)

Below are some questions that we hope to have answered by the end of the year.

- ☛ Do we need daytime restrictions on Saturday?
- ☛ Do we need different daytime restrictions during the week?
- ☛ Do we need nighttime restrictions throughout the neighborhood? or only on certain blocks? or not at all?

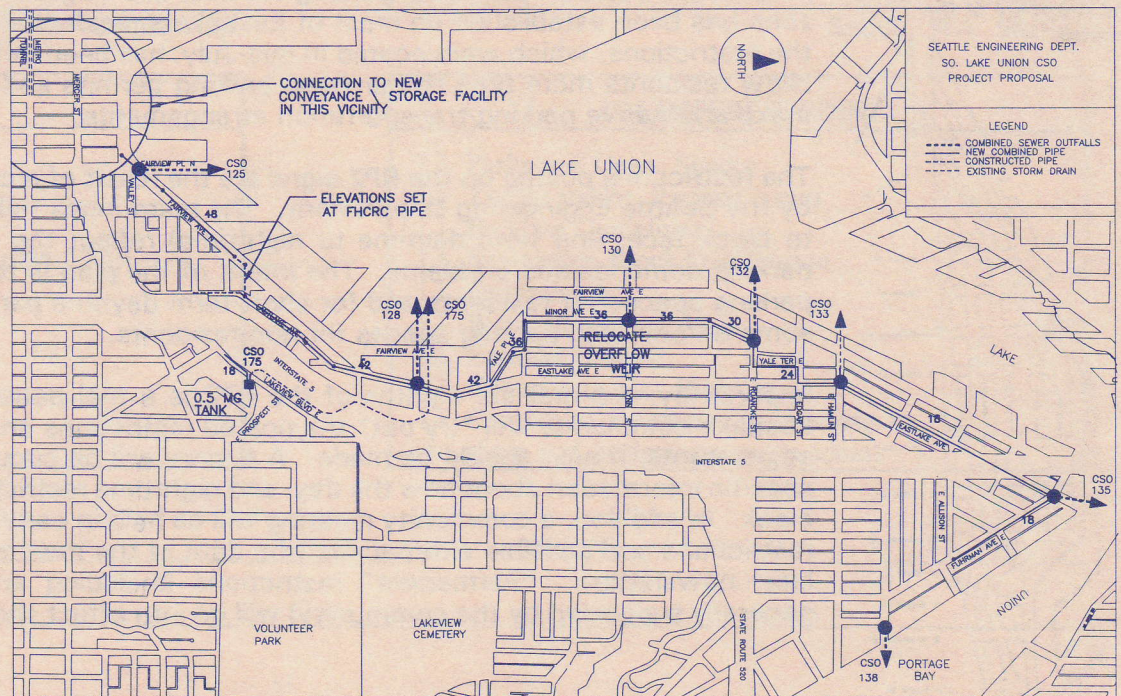
Meanwhile, residents that have not purchased their parking permits should do so soon, because enforcement of the restrictions will begin in August. If you have any RPZ-related questions or comments, or need to pick up a permit application, please call Eastlake residents Carol Eychaner (324-1716) or Lynn Poser (323-9257).



"In this city, Jack, you learn to respect the pedestrian."

EASTLAKE SEWERS

City to unveil plans August 30 for big dig for lake's sake--When it rains, the big sewer lines that run under Eastlake and Minor Avenues sometimes overflow raw sewage into Lake Union--as often as one hundred days a year at some outlets. Facing federal and state orders--and with the help of federal and state funds--the City is planning to clean up its act by enlarging the sewer lines. Although welcome, this project will bring the disruptions typical of street excavations (see map for route; Eastlake between Edgar Street and Yale Place E. will not be affected). It also poses the opportunity at no



extra cost to install some median strips on Eastlake Avenue for pedestrian refuge and plants where this would not interfere with left turns. Come **hear** how this project will **affect your home** or business, **Tuesday, August 30, 7 p.m.** at the Seattle Police Officers Guild. Also featured will be briefings from Metro about its sewer plans for south Lake Union, and its bus electrification project through our neighborhood.

TRANSPORTATION PLAN

Neighborhood endorses many transportation recommendations--A total of 190 people filled out our last issue's public response form on recommendations of the draft Eastlake Transportation Plan. It was released in May by a resident-business steering committee for the Eastlake Community Council under contract with the City Department of Neighborhoods. 58 of the responses were from 46 different businesses and four nonprofit organizations. Almost all of the draft plan's recommendations were endorsed by the public results--not surprising, because the plan was based on an earlier public survey and six public meetings in the neighborhood. With the help of these results, the current phase of the transportation plan has been finalized, and a printed version--including the full results from the 190 response forms received--will be available in September. Here are some of the highlights from the response forms.

Fairview Avenue. For a sidewalk on the west side of Fairview Avenue,

- ☛ 73 percent support one north of Hamlin Street
- ☛ 63 percent support one from Newton to Blaine
- ☛ 76 percent support one south of Blaine Street.
- ☛ 58 percent support a six-month trial traffic diverter across Fairview Avenue E. on the north side of the intersection with E. Newton street.
- ☛ 64 percent support traffic calming measures such as curb extensions and painted crosswalks on Fairview between Roanoke and Newton
- ☛ 80 percent support reducing the posted speed from 25 to 15 mph on this section of Fairview.
- ☛ 62 percent support installing a platform and walkway on the west side of Fairview Avenue at the East Boston Street end.
- ☛ 77 percent support a redesign of the intersection of Fairview and Eastlake Avenues to discourage drivers from making fast, sweeping turns.

Eastlake Avenue. The public response was also very favorable to the draft plan's recommendations for Eastlake Avenue.

- ☛ 64 percent support reducing the speed limit from 30 to 25 miles per hour.
- ☛ 79 percent support extending the center turn lane arrangement, and
- ☛ 63 percent support adding some planted medians where this does not interfere with left turns.
- ☛ 77 percent favor quickening the response to "walk" buttons, which currently can make the pedestrian wait as long as 95 seconds.
- ☛ 88 percent want the crosswalks painted with bolder stripes.
- ☛ 90 percent want pedestrians to have the right (now prohibited) to cross Eastlake Avenue on the south side of E. Louisa Street.
- ☛ 65 percent support curb extensions at corners to make the waiting pedestrian more visible and shorten the crossing distance.
- ☛ 74 percent favor restoring parking to both sides of Eastlake Avenue, and
- ☛ 82 percent support elimination of the current commuter-only spaces between Lynn and Louisa Streets.

The steering committee welcomes your views on these and other topics regarding the neighborhood streets and sidewalks. Letters describing particular needs are always welcome; drawings or photos are especially useful. Write us at:

Eastlake Transportation Plan
117 E. Louisa Street #1, Seattle 98102.



Sonya
KOMEN SALON

We are offering half off
a consultation & hair cut
by Nicky, who has just
joined our design team.

325-2376

Corner of Eastlake & Louisa

EASTLAKE RUMMAGE SALE

♥♥♥ **Sunday, September 11, 9am-3pm** ♥♥♥
 ♦♦♦ **2501 Eastlake Plaza Parking Lot** ♦♦♦
 (across from Tio's).

Clean out your closets and basement for Eastlake!

It's time for the second annual Eastlake Rummage Sale. Help us create a **HUGE** sale by recycling your treasures:

Books, CD's and Tapes
 Clothing
 Dishes and Kitchen Items
 "Objects" and Trinkets
 Tools and Garden Supplies
 Furniture
 Costume Jewelry
 Sports Equipment

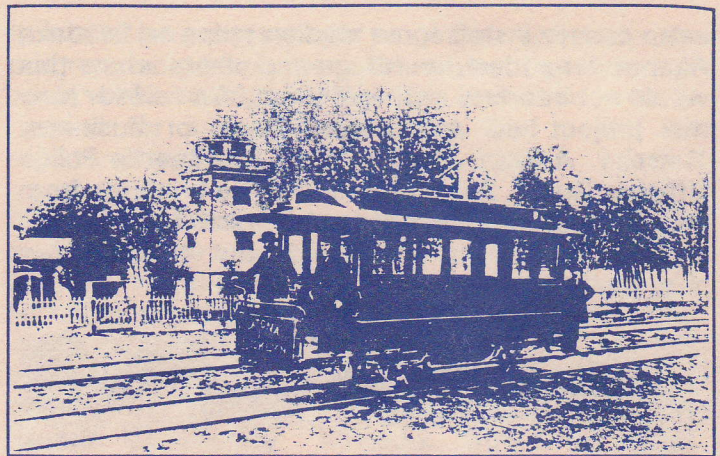
You name it, we'll sell it! (Well...use your discretion--no broken or soiled items please!)

To donate items: Please call Laurie Stusser at 323-4556 to arrange for a time to drop them off. Or bring your goodies with you on the day of the sale at 9:00 am when you come to shop! Furniture and large items are welcome--please deliver them directly to the site on the morning of the sale. All proceeds from the rummage sale will support the General Fund of the Eastlake Community Council.

NEWS FROM ECC

Eastlakers debate light rail

The three-county Regional Transit Authority (RTA) is considering *Eastlake Avenue* as a possible route for *light rail between downtown and the University District*, and neighborhood residents and businesses are debating what this might mean. The Eastlake Transportation plan does not recommend for or against light rail, but contains much analysis of the question. In the response form regarding the draft plan, we asked what people thought of the general idea of light rail on Eastlake Avenue; the result showed an almost even split, with 52 percent against and 48 percent for. The next two months



Courtesy of University of Washington Historical Photography Collection

will be crucial ones to express your views for or against, and to try to influence the design if the RTA decides to recommend this route to the voters next May. The RTA has promised to hold a *design workshop* for Eastlakers in the next two months; let us know if you would like to participate. Or just *write us a letter* with your ideas, to Light Rail Debate, c/o ECC, 117 E. Louisa #1, Seattle 98102.

Tree Stewards Needed



On July 6th eight Eastlakers and Tree Stewards strolled along Fairview and Franklin Avenues with professional arborists, Favero Greenforest and Elizabeth Walker, identifying trees. With Favero's and Elizabeth's generous and expert help, over 100 trees were identified. This was the first step in creating a walking tour brochure of Eastlake's trees. The purpose of the brochure is to raise awareness about the trees.

City trees need our help. Other tree steward opportunities involve distributing information, helping at tree maintenance work parties, and preparing for a tree planting this fall. If you are interested in any of these projects, please call Gwen Rousseau at 517-8062. The next tree steward training begins this fall. If interested please call Liz Ellis in the Seattle Engineering Department at 684-5008. During the dry summer months the most important thing a tree needs is water! water! water!

THE ALEXANDER TECHNIQUE



Releasing unwanted tension
 In activity and at rest
 Private and group lessons



Marjorie Nelson
 N.A.S.T.A.T. Certified Teacher
 329-3097

**NOMINATIONS TO ECC BOARD SOUGHT
 NEWSLETTER PUBLISHER NEEDED**

The many activities of the Eastlake Community Council - including this newsletter - would not be possible without dedicated volunteers. Nominations for the next *Board of Directors* are currently being considered. The *Eastlake News* will also need a *new publisher* soon. If you - or someone you know - would be interested in participating in a very stimulating community activity, please write a letter describing background and interests, addressed to ECC Nominations, 117 E. Louisa St. #1, Seattle 98102.

**EASTLAKE RIDESHARE EXCHANGE
 VOLUNTEERS SOUGHT**

As a part of the Eastlake Transportation Survey, many of you volunteered to share a ride with a neighbor to shopping, the doctor, or to work; others (many elderly or disabled) asked for ridesharing opportunities. Now we need someone to match up the names and accept calls for future ridematching. Volunteers please call Chris Leman at 322-5463. And if you'd just like to volunteer a ride or want one, call also, or fill out a form for the Eastlake Rideshare Exchange bulletin board at Lake Union Mail, 117 E. Louisa St.

ECC LAND TRUST

Historic Hydro House the Site for November 14 Auction

To benefit the housing, diversity, and historic preservation efforts of the Eastlake Community Land Trust, the neighborhood auction will be held on **Monday, November 14** at a very special location--the 1915 hydropower station next to the Steam Plant. Zymogenetics renovated the **hydro house** and uses it for an employee cafeteria, so this is a special chance to walk around inside. Doors open at 6:30 for the silent auction, and sassy auctioneer Dick Arnold will soon hold forth; there will be an admission charge. See you there!

B u s i n e s s
donations to the auction are invited, and we need *volunteers* for various tasks. Contact Chris Leman at 322-5463.



**TRAVEL
 EXPERTS**

Your Neighborhood Full Service Agency

• Daily Ticket Delivery to
 Office, Home & Airport

2825 EASTLAKE AVE EAST, STE 114
322-8334

PRESIDENT'S COLUMN

It's definitely summertime ... and if you think it's been hot, then you must have been following the proposed 520 expansion project. There's been a fair amount of controversy surrounding the proposal by private interests to expand, improve and place tolls on 520. Those private interests have promised us that nothing would be done unless there was community support for their proposal. We've been promised that the project would specifically be conditioned on the requirement of *mitigation* -- that magical concept of making bad effects not so bad by dampening them or giving a benefit as a counterbalance.

So far the board of directors of your community council has condemned the proposal on several pertinent grounds, and receipt of our criticism has been acknowledged. The project appears to be going forward despite the lack of community support (opposition!). This gives us pause when we consider their second promise of mitigation. Although this would be a "private" company project and not the "government" *per se*, I can't help but recall that Eastlake was once lower Capitol Hill until a certain I-5 transformed the community in order to facilitate the flow of traffic which had become too congested. There were promises of mitigation at that time. So far those promises have never been fulfilled. Will a private company be more responsive to our needs than the government?

But what's the real issue? There is clearly a problem with speed and comfort resulting from more cars than road capacity. That was the problem we mistakenly thought we were fixing a few short decades ago. Don't we have to fix that problem today? Maybe not. But let us assume that we agree it needs a fix. What is the fix? Is the solution to increase capacity? That makes sense. It's like an obese person buying larger clothing when their wardrobe becomes too tight. Or, they could engage in a real program including healthful diet and exercise. (No!! Anything but that?!!!!).

You cannot simply cure the problem of crowding by expanding capacity. That will just make a bigger mess a few more short decades from now. The real program for dealing with the transportation habit requires a fundamental shift on our social expectations and sense of entitlements.

It is through the re-creation of community that we successfully address the issues of "transportation obesity". It is through communication, innovation

and common effort, seasoned with a good dose of integrity, that we gain the future.

If you want a voice in the re-creation of your community, then the Eastlake Community Council may be a good place for you to spend your energy. Because it's definitely "hot".

David T. Huber

BUSINESS UPDATE

Bibelots and Books Moves Down Eastlake

One of our longest-standing advertisers and a beloved local business is Bibelots and Books, now open for business at a new location at 1530 Eastlake Avenue E., Suite 207 (329-6676). Owner Shirley Schneider is well known for her sales of children's and other vintage books, and has known generations of local writers. Congratulations on your move!

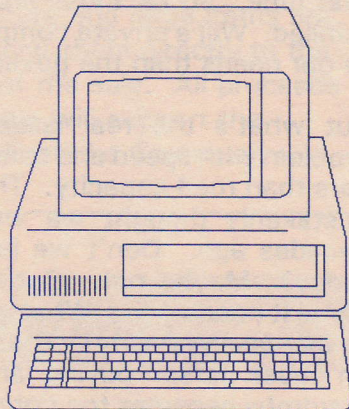
AROUND EASTLAKE

Eastlake Online: What Happened?

If you call the old data line number for EOL, you'll get referred to another, voice number.

I pulled out some numbers for who all had called in to the service: There was a total of around 200 people who had ever dialed in, and 15 of those were calling from within Eastlake, or people who worked within Eastlake. This told me that the service wasn't reaching its intended audience. I now think that the dial-in line should come much later in the program, only after the walk up terminals are well established.

The biggest source of complaint I received, was that the software was hard to use. I came to find that Citadel was cooked up by some dyed in the wool hackers, who don't believe in documentation, only word-of mouth.



It would be easy enough to get an easier to use program, something menu driven, but there are still some basic design differences between what's needed for a walk-up terminal, and a dial in, registered system.

It looks like the way to get the job done properly, is to write a new application from scratch. I'm learning Hypercard, which looks promising, and HTML is another likely candidate. If anyone else wants to participate, (Hardware is not a problem; we need some programming and design time!), then call my voice number. I can also be reached on the Seattle Community Network, 386-4140 (data) where my handle is anansi. (If you use internet e-mail, I'm anansi@scn.org.)

Joe Rodgers, 328-6115

Lake Union Conservation Group Formed

In July more than twenty people met to form an organization to protect and improve the waters, fisheries, and wetlands of Lake Union. Lake Union is one of the most highly industrialized and heavily used of the state's lakes. But it also is a major migration route for fish and wildfowl, and home to many animals and plants, and the women and men who love them. If you would like to get involved, call Dave Moore at 325-5463.

CHOICES

The Seattle Teen Pregnancy Prevention Project
Sponsored by the Seattle King County Department of Public Health and Planned Parenthood of Seattle

Teens having babies isn't new, and we have learned something about what helps. Teens need to see choices for themselves. They can only do this if their parents, neighbors and friends support responsible sexual behavior, not child bearing. This climate of support needs more than a slogan of "Just Say No". It needs people's participation in talking, listening and understanding how teens can protect themselves from pregnancy and disease. This dialogue is essential if we are going to see more than a temporary downturn in birth rates.

The Seattle area has had an increase in teen pregnancies by 25% since 1985; and the rate of teen births has increased 73% since 1980. The impact of these statistics do not only effect teens and their family, but have social and economic ramifications for society as a whole.

Good news is that we can do something! CHOICES is a program based on a grant to reduce teen pregnancy in Seattle. The Project includes:

- ☞ Youth activities
- ☞ Youth Support Groups
- ☞ Special Teen Clinics
- ☞ Follow-up for teen clients
- ☞ Expand current peer education programs to sexuality as a whole

Community activities

- ☞ Seattle Prevention Committee
- ☞ Men Talking to Men Advisory Group
- ☞ TALK, LISTEN, LINK - Youth Worker Trainings on Adolescent Sexuality Issues.

In order to make the CHOICES Project a success we need the support of the Seattle community. We are looking for community members who wish to be a part of the solution for teen pregnancy - to provide ideas and suggestions for ways in which to provide a better future for the teens of Seattle, and ourselves as a community.

If you are interested in learning more about the CHOICES Project please call!

Siri Bliesner 296-4721.

CARDS, GIFTS, ETC.



Unique Gifts, Cards, Balloons
Office Supplies and More!



2366 Eastlake Ave. E., Suite 102
329-9202

Steve and Cindy Grayson, Owners

A LETTER TO THE EDITOR

I am an Eastlake resident and avid reader of Eastlake News. I look forward every month to reading about news in our community, and have appreciated your updates on the transportation plan. It is because I value your newsletter that I am writing to tell you how alarmed I was by the article "Don't Feed the Squirrels" which appeared in the June issue.

I understand there are problems associated with the growth of the gray squirrel population. However, I am concerned by the newsletter's apparent endorsement of the Wildlife Department's remedy and what this reflects on our neighborhood. On one level, I find it disturbing that Eastlakens would promote and perhaps even carry out such deliberate

cruelty towards animals -- any animal, no matter how "pesky" it may be to our gardens and homes. On another more practical level, I want to point out that drowning an animal is not something done easily. A small animal like a squirrel can survive a drowning attempt for up to 30 or 40 minutes -- a process that can be very stressful for both the animal and the person trying to kill it.

I would like to offer some alternatives that would be less traumatic for both people and animals -- and a great deal more humane. I hope I can persuade you to devote a paragraph in your upcoming issue to some non-violent tips for dealing with our neighborhood squirrels.

As you point out in your article, squirrels are attracted by sources of food, water and shelter. The best prevention is to eliminate these attractions. Your advice not to feed squirrels will go a long way toward reducing the problem. There are other measures that can also help. Bulbs can be sprayed with a bitter-tasting, but non-poisonous spray that deters "grazing". Holes in attics and siding can be plugged to keep out squirrels and other animals and prevent damage to insulation and wiring. The dog or cat food should not be left outside as a free lunch for squirrels and other wildlife. The HOWL Wildlife Center in Lynnwood is a good resource for additional information. People can reach them by calling 787-2500 and asking for the Wildlife Center.

Again, I think the Eastlake News is a tremendous resource for our community and appreciate your efforts spent putting it together each month.

Beth Hagenlocker



Ed note: Readers are encouraged to send in comments to the Eastlake News -- both negative and positive. Reader participation will help create a more stimulating newsletter.

G&H PRINTING
The Corner for Fine Printing

2370
EASTLAKE AVE. E.
SEATTLE, WA 98102

E. LOUISA ST.

phone 329-9888
fax 324-3705

NEW STORE !!!
ET CETERAS
 MAIL CENTER & PROFESSIONAL SERVICES
 COPIES • FAX
 BUSINESS STATIONARY
 PACKING SERVICE & SUPPLIES
POSTAGE STAMPS
 UPS & POST OFFICE SHIPPING SERVICES
 LOCATED AT 2228 A EASTLAKE AVE EAST
 PHONE / FAX (206)323-0508

FAIRVIEW TRAFFIC CALMING

Joint grant sought

A clear mandate in public response to the draft Eastlake Transportation Plan was to do something soon to make it safer to walk along Fairview Avenue. Residents and businesses along Fairview care about this, and so do the many people who work or live elsewhere but enjoy strolling along this very special street. The proposals--featured in our last newsletter--include curb extensions and landscaping, rumble strips or painted crosswalks, a traffic diverter, a sidewalk south of Newton and north of Hamlin, and other measures that will create a better balance between the automobile and those on foot. Thus the Eastlake Community Council and the Floating Homes Association have joined to apply for City Neighborhood Matching Funds to begin to install some improvements that will improve safety on Fairview. We need donated time and skills for the Fairview project; if you would like to get involved, call *Mary Sue Galvin* ☎323-6439 (or write her at 2019F Fairview Avenue E); or call *Chris Leman* ☎322-5463.



BIBLOTS & BOOKS
 1530 EASTLAKE AVE E., Suite 207
 Seattle, WA 98102 (206)329-6676
 12-5:30 Tues.-Sat. & By Appointment
 Now specializing in Children's Books,
 Classics, and Illustrated Books
 Shirley Schneider, Bookseller

MEMBERSHIP APPLICATION

This is a NEW RENEWAL membership.

Eastlake Community Council
 117 E Louisa, #1
 Seattle, WA 98102

| DUES | |
|---|----------|
| <input type="checkbox"/> Household: | \$25 |
| <input type="checkbox"/> Senior/Student/Low Income: | \$10 |
| <input type="checkbox"/> Business: | \$50 |
| <input type="checkbox"/> Extra Donation | \$ _____ |

| I'M INTERESTED IN: |
|--|
| <input type="checkbox"/> Parks and Open Spaces |
| <input type="checkbox"/> Traffic and/or Parking Issues |
| <input type="checkbox"/> Building Guidelines |
| <input type="checkbox"/> Newsletter Block Distribution |
| <input type="checkbox"/> Fundraising |
| <input type="checkbox"/> Work Parties |
| <input type="checkbox"/> Eastlake History |
| <input type="checkbox"/> Community Art Projects |
| <input type="checkbox"/> Coming to a community meeting to share and brainstorm more ideas! |

NAME/S _____

PHONE _____

ADDRESS _____