

Eastlake  
Community  
Council

117 E Louisa St. #1  
Seattle, WA 98102

FREE-Take One

Time to renew?  
Your membership  
expires on the month  
and year printed in  
your label's upper  
right corner.

November 1993

**Board Members**

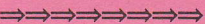
David Huber,  
President  
Michael Sullivan,  
Vice President  
Judy Rhodes,  
Vice President  
Barbara Zegar,  
Secretary  
Surain afSandeberg,  
Treasurer  
Andrea Brenneke  
and Dan Clarkson  
John Cornethan  
Joy Huber  
Chris Leman  
Margaret Nelson  
Steinbrueck  
Joe Rodgers  
Laurie Stusser

**Editor:**

Robert afSandeberg

Eastlake News is  
distributed free to  
residents of the  
Eastlake Community  
and members of the  
Council.

This half-completed  
1904 topographic  
map was found in  
the archives of the  
Seattle Engineering  
Department. It  
shows the routes of  
a bicycle path and  
the streetcars before  
the current streets  
were installed.



# EASTLAKE NEWS

## UPCOMING EVENTS

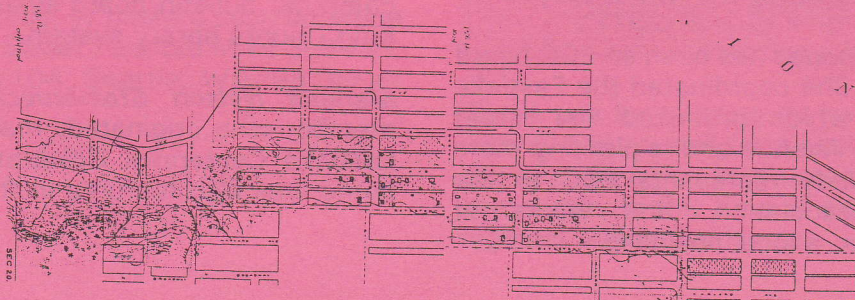
- December 2,** Thursday at 6:30 pm at the Police Officers' Guild, 2517 Eastlake. ECC General meeting welcoming Larry Gossett.
- December 2,** following the ECC general meeting:  
Fairview Olmstead Park Commission meeting. ☞ See page 2.
- December 14,** Tuesday at 7-8 pm 2727 Franklin Ave. E #301.  
Eastlake Community Land Trust Meeting.
- December 14,** Immediately following the meeting at 8 pm:  
ECLT and Diversity Programs holiday potluck. ☞ See page 6.
- January 6,** Thursday at 7:30 pm, 2040½ Franklin Ave. E.  
Towncenter Committee Meeting. ☞ See page 6.

## ECC GENERAL MEETING

### EASTLAKE WELCOMES KING COUNTY COUNCIL-ELECT LARRY GOSSETT TO PUBLIC MEETING

*The new Metro-King County government will be making important decisions about land use and transportation that will help shape Eastlake's future. Newly elected to represent our part of Seattle is longtime neighborhood activist Larry Gossett.*

Please join ECC in welcoming Larry Gossett to our neighborhood to discuss his goals and our community's needs and interests for the upcoming year. The general meeting is scheduled for **Thursday, December 2, at 6:30 pm** in the **Police Officer's Guild, 2517 Eastlake Avenue E.** For more information, contact Andrea Brenneke ☎720-0300.



## FAIRVIEW OLMSTEAD PARK COMMISSION

The Fairview Olmstead Park Commission will hold a meeting immediately following Larry Gossett's talk on **Thursday, December 2**, at the Police Officers Guild, 2517 Eastlake Ave E.

This meeting will be an open discussion about the city and county's progress on acquiring the land for the park, and what the next step in this process will be for the Fairview Olmstead Park Commission.

Also on the agenda will be a proposal for the Commission to take a more active role in the existing parks in the Eastlake area. Planting street trees, helping to maintain street-end parks, the P-Patch, and starting a program of "adopting a street end park" will all be discussed.

Anyone who is interested in the Fairview Olmstead Park, the P-patch, street-end parks, or street trees is encouraged to attend and begin planning the future of all the parks in the Eastlake community.

## NEWS FROM ECC

### THE NEW ECC BOARD

At the annual meeting of the Eastlake Community Council, the following board members were elected to serve one year:

**President:** *David Huber* served last year as ECC president, and before that as board member and the coordinator of Eastlake Tomorrow neighborhood planning project. David is an attorney. He and his wife Joy host at their home (2300 Yale Avenue E.) every Thursday evening (beginning at 6:30) an open house projects night, with food and fellowship to network and welcome new volunteers.

**Vice President:** *Michael Sullivan* has been an ECC board member for two years. He coordinated the construction, fundraising, and volunteer activities for the Hamlin Streetend Park. Represents ECC on the Lake Union District Council and the TOPS-Seward School Site Council, and coordinates ECC relations with the police department for the 4th of July.

**Vice President:** *Judy Rhodes* has been an ECC board member for one year. She coordinated the Eastlake town center project which produced the street banners along Eastlake Avenue and is planting more and more flowers. Judy represents ECC to the Eastlake Business Association, and works at Management Recruiters, a local business.

**Secretary:** *Barbara Zegar* has served as ECC secretary for two years. In that position she computerized our membership list and established a better system for notifying members of needed renewals. Barb helped produce the ECC membership brochure and conducted many interviews for the Eastlake Tomorrow neighborhood planning process. She works at a major accounting firm.

**Treasurer:** *Surain afSandeberg* became ECC treasurer about six months ago after serving on the board. She has been working to computerize ECC's finances and strengthen our accounting and reporting. Surain also helped produce the ECC membership brochure, and conducted many interviews for the Eastlake Tomorrow neighborhood planning process. She works at The Nature Conservancy.

*Andrea Brenneke* and *Dan Clarkson* currently share an ECC board position. Andrea is an attorney at MacDonald, Hoague and Bayless. She is coordinating ECC's diversity program, and is also co-chair of the Eastlake Community Land Trust. Dan is an attorney with the Washington Department of Ecology, and has been coordinating ECC's parks and trails program.

*John Cornethan* is a longtime ECC member whose other volunteer involvements have included PTA, YMCA, and the civil rights movement. He is a precinct committee officer for the Democratic Party, and works at the polls at Seward School. John is now retired from Seattle City Light.

*Joy Huber* has been an ECC board member for two years. She played a central role in coordinating the various projects of Eastlake Tomorrow and in securing funds for the Gateway project at the corner of Eastlake and Fairview avenues. Also working to reduce noise from I-5. Joy is executive director of the Rivers Council of Washington.

*Chris Leman* served as president for four terms, and coordinated the Eastlake tour and several holiday auctions. Now coordinating the Eastlake transportation plan. Also co-chair of the Eastlake Community Land Trust and executive director of the Institute for Transportation and the Environment.

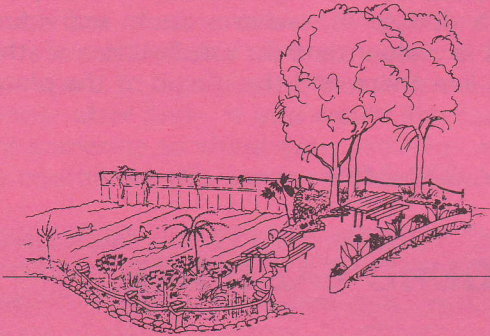
*Joe Rodgers* has been active in the Eastlake Tomorrow neighborhood planning process, and played a major role in the successful Gateway grant proposal. He is interested in creating a neighborhood computer bulletin board system. Joe works for the King County library system.

*Marjorie Nelson Steinbrueck* is a longtime ECC member who originated, managed, and hosted the Eastlake Centennial Celebration this August. Her home was also featured in the 1991 Eastlake Tour.

She is a professional actress who has performed in plays all over the country.

**Laurie Stusser** managed the rummage sale and helped with publicity for the Eastlake Centennial Celebration this August. She also has helped with the Eastlake Town Center project. An Eastlake renter or homeowner for ten years, Laurie works for One Reel, the producers of Bumpershoot.

## HAMLIN STREET PARK COMMITTEE



Bulbs, bulbs, and more bulbs. This is the best way to describe the last month of activity at the Hamlin Street Park. Ellen Chevalier, Jean Savelle, Mike Sullivan, and Barb Zegar planted over 1,000 spring bulbs in the last month. Tulips, daffodils, hyacinths, crocus, iris, and grape muscari will cover the park in waves of color next spring.

While winter means the end for nearly all of our gardening activities for this year, spring is only four months away. Activities we have planned for this spring include: weeding, mulching all beds, planting summer flowering bulbs, installing an irrigation system, and planting summer annuals. Your help will be needed to get the park in shape for it's second spring and summer.

Because fall is the end of the year for the park, I would like to take this opportunity to thank all of the businesses and individuals who have graciously volunteered their time and money over the last year. Your contributions have made the Hamlin Street Park the best little park in Eastlake. Thank-you.

The Hamlin Street Park is a *community built, community maintained* park. We receive *no city funds* and all donations go to maintaining and improving the park. If you would like to *become involved, donate your time, or make a cash donation* please **write to Hamlin Street Park** c/o Mike Sullivan, 2728 Fairview Ave E #104, Seattle, WA 98102 or call Mike at 329-4371.

*Mike Sullivan*

## LAND USE ISSUES

***ECLT and CHHIP seek property, comments and participation in project to develop or renovate affordable housing.***

The Eastlake Community Land Trust (ECLT) is happy to announce that it has negotiated an agreement to cooperate with the Capitol Hill Housing Improvement Program (CHHIP) to develop or renovate affordable housing in the Eastlake neighborhood. CHHIP is a successful community-based non-profit developer and manager of affordable housing. The ECLT has been working in conjunction with the Diversity Programs of the Eastlake Community Council (ECC) to develop this agreement and the ECC has endorsed the project concept. Housing affordability plays an important role in a community's ability to prevent displacement of current residents and enhance a neighborhood's diversity. By taking a proactive role, Eastlake can create housing opportunities which best meet our needs and compatible with neighborhood character. In addition, involvement is assured at the front end and throughout the process.

***We are seeking a suitable project site.*** If you have land or buildings for sale or for donation, we are interested in talking with you. The ECLT or CHHIP can also be designated as the recipient of property in a will. Our project interests in renovating or developing affordable housing include providing decent, affordable housing suitable for families with children or elderly persons that "fits" into the neighborhood. Therefore, we are willing to consider vacant land, existing multi-family structures, or even large houses suitable for renovation and subdivision. If you have sites you think we should consider, or if you are interested in selling to an organization interested in the future of Eastlake -- we should talk! Please call Jane Kiker 324-0575 for project site ideas.

***We are seeking your ideas and participation.*** If you are interested in working on the affordable housing project in any way, if you have ideas, suggestions or comments to share, or if you just want to become a member of the group, you can contact Andrea Brenneke at 720-0300.

## PRESIDENT'S COLUMN

Thank you for electing me to the presidency of your community council for a second year. It is an honor and a privilege to be trusted with representing this community in this time of dramatic change on local, regional and global levels.

There is a car bumper sticker that has become quite popular which reads, "Think Globally, Act Locally". In fact, by acting locally you have a global impact, especially in a community with the public profile of Eastlake. Gary Lawrence, Director of the Seattle Planning Department has said that Eastlake is a microcosm of the whole city, having the attributes on a small scale that the city has on a larger scale: Eastlake is divided down the middle by Eastlake Avenue the way Seattle is divided by I-5, there is a dynamic tension between the needs of the residents and the needs of the businesses, there is a push toward an increase in population and use in an area that has definite geographic boundaries, parking and transportation issues cry out for workable solutions. Therefore, the planning department is looking to the work that we are doing in Eastlake to provide insights into how the whole city can address these issues.

We have the chance to show the city how to foster and preserve a desirable life-style and unique flavor of community while effectively addressing the challenges that continue to rush our way. In turn, this great city will provide answers to these issues on a grand scale which may provide global solutions as we all write the final chapters of the twentieth century. I am convinced that the key is individual participation in local community. When we are able to live fully and actively, in a local way, the dependence on burdensome transportation technologies will decrease as our depth of relationship will increase. The community of the future could then enjoy technical advantages and global connection without losing the home-like quality and sense of place we treasure and that is presently at such great risk.

Looking forward to the next year we will see the Eastlake Tomorrow Projects continue to produce spectacular results. We will see the closing of the I-5 express lanes on a nightly basis giving us some relief from THE NOISE. We will make strides in the building of a public artwork as a gateway in the South where Fairview and Eastlake Avenues meet, thanks to a \$40,000 Neighborhood Matching Fund Grant. The Town Center will blossom and wave with flowers and banners as the businesses and residents work together on developing common ground and cooperative solutions. Fairview will become even more pleasant as a community treasure for walking and enjoyment of our Lake. Traffic and parking will be the subject of concerted efforts on the part of dedicated and talented individuals. Fairview Avenue and the parks will be increasingly more pedestrian friendly, so that we can enjoy the treasure of the shoreline. And the diversity of the people who live in this Northwest city will be honored and promoted by our work in all its aspects.

To help us in meeting these challenges and opportunities, you have elected a new board of directors whose members will serve with your

interests at heart. You have chosen highly qualified and wonderful people. Brief statements about each of them are included in another section of this newsletter. I AM REALLY EXCITED ABOUT WORKING WITH THIS CREW!!

But the whole point of all this is that we are all in the community together and our effectiveness is a result of your participation. When you join the Eastlake Community Council, or renew your membership, you send a message to communities all over Seattle and to the City, the region and the world, that communities are our unique resource and represent a possibility for a future worth living in, where each individual community has a value that is a reflection of the individuals who live there and the magic of the place itself.

*David Huber, 322-2499*

## AROUND EASTLAKE

***Lighting the Louisa Street arborway***--One of the city's most charming and heavily used public walkways is the arborway from Yale Ave. E. east to E. Louisa St. The unusual length of the block between E. Roanoke and E. Lynn streets makes this century-old shortcut a much-loved part of the neighborhood. Now the arborway has a wonderful new feature--a row of lights that improve its safety and make it downright romantic to walk through at night. The lights were installed, and are operated, at their own expense by the McCallums, new residents of the townhouse just north of the arborway. The whole neighborhood salutes this family's stewardship of this small but important Eastlake place.

### ***Eastlake Transportation Plan and Design Guidelines***

A steering committee of volunteers, drawn equally from residents and business people, will begin in January to examine suggestions on our neighborhood streets and sidewalks, with particular focus on Eastlake and Fairview avenues. Steering committee members include residents Richard Hicks, Mary Sue Galvin, Lynn Poser, Carol Eychaner, and Chris Leman; and businesspeople Guy Ott (Fred Hutchinson Cancer Research Center), Bob Mitchell (Hartford Insurance Company), Mike Johns (EVS consultants), Richard Esposito (Travel Experts), and Scott Rohrer (Marine Service Center). Donating some expert time will be the Berger Partnership and an entire UW studio class led by Prof. Richard Untermann. Please send in suggestions about any street situations that need attention, and let us know about useful solutions you have seen in other neighborhoods. Write to Eastlake Transportation Plan, 117 E. Louisa #1, Seattle 98102.

**Eastlake Rideshare Exchange**--A volunteer with a car would like to help drive a senior or disabled Eastlaker on weekdays at about 5 p.m. Do you--or someone you know--need a lift for grocery shopping, sightseeing, or some other purpose? Call the rideshare exchange at 322-5463. To volunteer some time sharing a ride, call us or put up a notice at Lake Union Mail, 117 E. Louisa St.

**Share your table with other Eastlakers**--With Thanksgiving and the holidays approaching, some of our neighborhood's newcomers and some of our oldtimers will be eating alone--unless you help. Please invite one or more of these neighbors into your home for a meal; it doesn't have to be on a holiday, and for our seniors, breakfast or lunch is usually better than dinner after dark. If you would like some suggestions for someone to share your table (or would be willing to coordinate this service), please call 322-5463.

**Congratulations**--To Marjorie Nelson Steinbrueck, who "on the occasion of the anniversary of her birth some perfect number of decades ago" was serenaded by a range of singers, actors, neighborhood activists, and family members on November 1 at the New City Theater. Publicity photos from Marjorie's remarkable--and continuing--acting career were on display. But perhaps most unusual was a special rap song and tap dance by her daughters dressed as huge sunflowers.

**Condolences**--To ECC Secretary Barbara Zegar, who recently lost her mother to a stroke. To Gordon and Janet Livengood, who lost their son Thomas. To anyone else who has lost a loved one this season. Please write us if you know of others who should be remembered.

**Park Department-1, Beavers-0:** Houseboaters know that Lake Union's thriving colony of beavers will chew up any tree left unguarded. Some years ago, a large tree in the Roanoke streetend park was completely cut down by the critters. Seattle's Department of Parks and Recreation seemingly forgot that lesson when last May it removed the fencing that for many years had protected the remaining trees at the Roanoke streetend park.

Sure enough, the beavers resumed their work, and were only a few nights away from felling another tree when--prompted in part by a well-timed alert from resident Brad Ingham--the Park department put the fencing back up around it. Thanks, Park department, for listening--but the other trees remain unprotected, and we are hoping that the fencing can be restored to protect them as well. To learn more about how to protect and improve our streetend parks, come to the ECC/Olmsted-Fairview Park Commission on December 2 (see page 2).

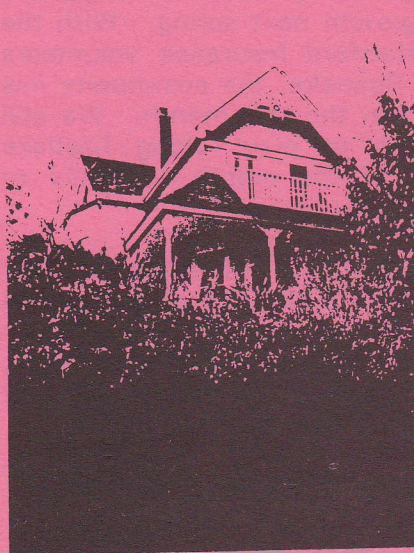
**The photos in the previous issue of Eastlake News**--Many thanks to Terrell Lozada and Erika Irwin for helping identify the photos along Eastlake Avenue. The top photo was of the corner of Eastlake and Lynn. The bottom photo was of Eastlake and Garfield. If you have a mystery photo, please lend it for publication in the Eastlake News.

## EASTLAKE BUSINESS UPDATE

**DANDY CUSTOM CRAFTSMEN INC:** Eastlakers will be sad to learn that this business has closed down, since it has been one of the strongest supporters of the community in the past. Owner Dan Atkinson is taking a leave to care for his 3 month old son. The good news is that he is planning to be back in business in about one year.

**CARDS, GIFTS, ETC.** is a new store located at 2366 Eastlake Ave. E. (where the Roanoke Exit bar used to be). Shop owners Cindy and Steve Grayson opened on November 12. They offer a special selection of greeting cards, stationery, wrapping paper, holiday decorations, and even some interesting T-shirts. And there's room for more, so they'd like to hear what else you think they should carry. Hours are 7 a.m. to 6 p.m. weekdays. The shop will also be open on Saturdays for the first few weeks, and will continue if enough of us drop by.

**SEATTLE FLORAL AND GARDEN** is now settled in at its beautifully renovated quarters at 2920 Eastlake Avenue. To celebrate, owner Bob Wolf will be holding a grand opening on the weekend of December 4 and 5 (8 a.m. to 6 p.m.), with refreshments and specials. Christmas trees will be available.



This Victorian home at 2819 Franklin Ave. E.--saved from the wrecking ball through the efforts of the Eastlake Community Council--was purchased and exquisitely restored by its current owners, Anne Fisher and Lynn Howell.

**LAUNDROMAT WANTED.** Now that Sonya Komen's salon has moved upstairs in the retail center at Eastlake and Louisa, her old quarters in the corner unit at 2501 Eastlake Ave. E. are available for lease. Is there someone out there who could reestablish a much-needed laundromat like the one that the new construction displaced? The facilities are well-designed for that purpose, and a laundromat would fit well with the Eastlake Cleaners nearby. Check out the realty sign on the door, and spread the word to others.

## Eastlake Tomorrow Project Reports

### Eastlake Diversity Program

Eastlake Community Land Trust (ECLT) will hold a meeting on **Tuesday, December 14, 7-8 p.m.** at 2727 Franklin Ave. E. #301

... followed by:

ECLT & Diversity Programs **holiday potluck:** 8:00 p.m. - ? Please bring a dish to share and an ornament for the hostess.

Andrea Brenneke 720-0300

### Eastlake Towncenter Project

On a rainy October Saturday, eight people met at the corner of East Lynn and Eastlake with shovels over their shoulders and planted over 600 daffodil bulbs from Louisa to Boston. We gave 500 bulbs to the Seward School, enough for each student to plant a bulb and monitor its growth next spring. With the 600 bulbs that the Hartford Insurance volunteers planted from Galer to Roanoke, the community has planted 1700 daffodils in the last month. We still have about 400 bulbs to plant along Eastlake sometime at the end of the month. *Thanks* to everyone who participated.

The Town Center Committee will **meet** the **first Thursday in January, 7:30**, 20401/2 Franklin Avenue E to talk about coordinating the art project from Metro, joint projects with the business community, and possibilities for planting in the spring. Contact Judy Rhodes, 325-9564 for details.

## METRO TO SPEND \$80,000 ON ART

Metro has won a \$17,000,000 federal grant to *electrify the 70 bus line* from the University bridge to downtown. Attached to this project is approximately

\$80,000 to provide art along the route, \$18,000 in planning and \$60,000 for the art itself.

In early November a jury composed of artists, architects and community representatives chose Carolyn Law from a field of 27 contenders to be the art coordinator for the project. Carolyn has an impressive background in urban art, worked on the Broad Street project for Metro and is currently completing a city project in Eastern Washington where she has worked extensively with neighborhood groups to identify key elements of the city's surroundings and translate them into art.

Carolyn will be working with the community, researching history and possibilities for art installation from January to April. The Town Center Committee will function as community liaison with her. If you would like to **participate, come** to the **January meeting** of the Town Center Group, or call Judy Rhodes for details.

## THE HOLIDAY SEASON

### DICK ARNOLD -- A SUPER VOLUNTEER



Some years ago the answering machine at the Arnold residence harbored a crusty Britisher intoning that "Dick is in the cellah, Elise is immobile, and the dog has an impediment." It was just one of the thousand voices of Dick Arnold--actor, broadcaster, union leader, and neighborhood activist. His first serious role was as Hiram Corn, a six-inch pixie who lived in Billy's shirt pocket and shared the boy's adventures on the Saturday-morning radio show *The Children's Hour*. Since then, Dick has played hundreds of other roles--even that of John Keister's father on KING-TV's *Almost Live*.

Locally Dick has served as auctioneer for the Eastlake Community Council auctions, costumed in an Edwardian waistcoat and ascot; in earlier years he also served on the ECC board, and the meetings are just not the same without him. Neither was KOMO-TV

after supersalesman Dick brandished a stuffed trout in a free ad the station did to advertise one of our auctions. Dick's wife Elise (recovering well from a heart operation) is an equally talented musician and teacher, and word has it that they have developed a hilarious duet about married life that the neighborhood can hope to hear performed someday. Thanks Dick and Elise for the many roles you have played in the neighborhood.

*Dick Arnold will receive an "Eastlake Loafers Award" and be given one loaf of Robert afSandeberg's famous home-baked Scandinavian bread.*

## THE KAYAK CAROLLERS TO VISIT EASTLAKE AGAIN



For the sixth year in a row, the *kayak carollers* bring joy and Christmas tidings to those with lakefront property. On December 12, 13, 14, and 15, thirty volunteers will take to the water to spread the holiday spirit. Bass vocalist Norman Smith leads the singing of Jingle Bells, Rudolph the Red-Nosed Reindeer, Hark! the Herald Angels Sing, and many more favorites.

This event is put together by Bill Stewart at the Northwest Outdoor Center (NWOC). For the joy of sharing in the merriment and partaking in a special singing evening on Lake Union, carollers are asked to donate \$15, most of which benefits the Seattle Children's Home. NWOC provides kayaks and paddling gear and offers tips on paddling and safety (voice lessons not included).

Our heartfelt thanks to Bill for again organizing this event of seasonal joy and giving. For more information or to *become one of the carollers*, call Bill at 281-9694.

## CONSERVE RESOURCES

Celebrate the Season with these  
Tips that Help Conserve Resources

The annual holiday consumption frenzy will soon be upon us. At the same time, we think more and more about the problems that overconsuming creates for our home, this planet, and we don't want to contribute to that. There are many ways to maintain the holiday spirit and ease the guilt. Here follows an eclectic array of ideas gathered over the last couple of years.

### Presents

- ☼ Make or buy handmade goods.
- ☼ Choose presents without unnecessary packaging.
- ☼ Give items that discourage a throwaway society: cloth napkins, dishcloths, coffee mugs, cloth shopping bags.
- ☼ Give organically-grown fruits or live plants.
- ☼ Give gifts to non-profits in the name of a friend.

### Packaging

- ☼ Iron and re-use last year's wrapping paper and ribbons.
- ☼ Use newspaper funny pages or the pictures from old calendars as wrapping paper.
- ☼ Package gifts in reusable baskets, pots and planters, muslin or other fabrics, colorful shopping bags and brown paper bags with holes punched in to thread bows.
- ☼ Invest in fabric ribbons that can be ironed and reused. Or try twine and raffia.
- ☼ Decorate packages with found treasures: pine cones, dried leaves, and flowers and twigs.
- ☼ Recycle greeting cards into postcards by cutting off the written side. Or cut to use as gift tags.
- ☼ Avoid buying foil wrapping paper, ribbons, styrofoam, and other non-recyclable packaging materials. If you receive any of these in your packaging, remember that they should not be placed in your recycling bins.

### Parties

- ☼ Use cloth napkins and washable plates, cups, glasses and flatware.
- ☼ Recycle aluminum cans and glass bottles after a party.
- ☼ Decorate with live plants, then replant outdoors or leave inside to add healthy oxygen to your home.

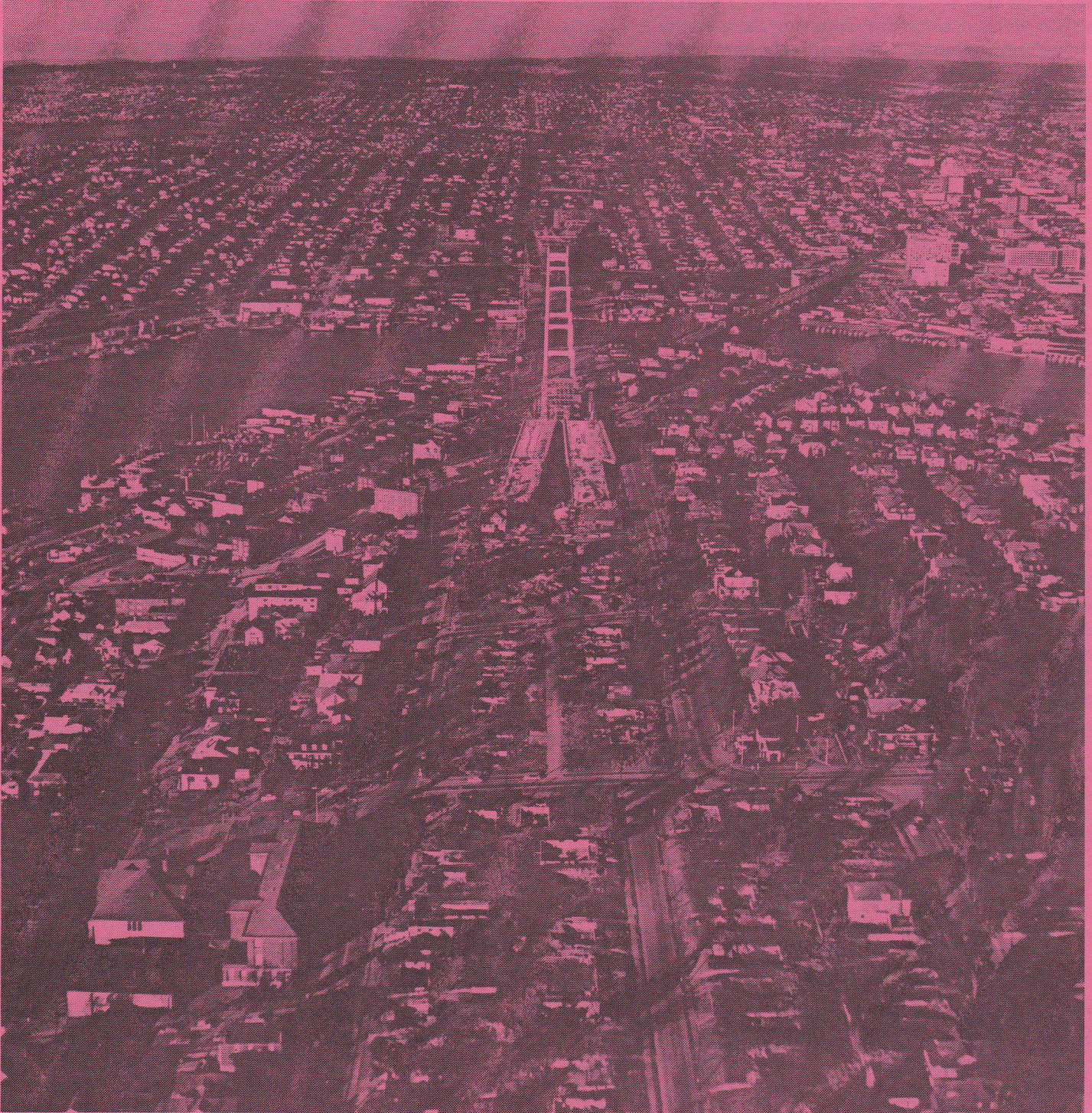
### The Christmas Tree

- ☼ Adorn your wreaths and trees with seeds, pine cones, popcorn, and cranberry garlands, gingerbread cookies and fruits. Later, leave outside for birds or use for compost.
- ☼ Instead of buying a tree, decorate your houseplants.
- ☼ Buy a live tree that can be planted outdoors after the holidays.
- ☼ Flocked trees are not recyclable. Residents taking flocked trees to the transfer station for disposal will be charged the regular garbage rate.

- ☼ Trees devoid of all ornaments, tinsel, lights, and decorations can be:
  - collected at curbside as part of the normal yard waste recycling program, (3-ft sections, branches trimmed, bound and set out with clean green, separate from garbage. Small pieces should be placed in trash bags.)
  - or accepted free of charge at the transfer station. Christmas trees must be cut into

8-ft sections. (No charge for about a 2-week period following Christmas)

Many of you have probably found new ways or have some old, established traditions which help our environment and add meaning to the warm, sharing holiday season. Please send them to the ECC Newsletter, 117 E Louisa Street, Seattle 98102, and all of the community can share in these great ideas next year.



This aerial photograph from the July 11, 1960 issue of the Seattle Post-Intelligencer shows the onward march of the I-5 construction. Dozens of homes in its path have already been reduced to their foundations. If you have any photos of the homes that were lost, please lend them to the Eastlake Archives, 117 E. Louisa #1, Seattle 98102, 322-5463.



## Eastlake RPZ--Another Round

The October 18 City Council hearing on the proposed Residential Parking Zone for Eastlake was canceled by the City just four days before the hearing was to take place. Behind this cancellation were two letters from an attorney hired by the Eastlake Business Association challenging the RPZ.

The most recent letter, dated October 13, was sent to Martha Choe, Chair of the City Council Transportation Committee. The letter claimed that the City could not continue with the RPZ process in the absence of a State Environmental Policy Act (SEPA) review of the proposed Eastlake RPZ ordinance. Although SEPA review has never before been a requirement for a Residential Parking Zone, the City's Law Department decided that the Engineering Department must proceed with the SEPA review. This means that the Engineering Department must now complete an environmental checklist and decide whether a full environmental impact statement (EIS) will be required or if a determination of non-significance will be issued. Any ruling can be appealed, first to the City Hearing Examiner and then to the City Council. Needless to say, the SEPA procedures could add months or even years to the process.

The Eastlake Residents' RPZ Committee has requested a meeting with Council member Choe and the City Law Department to discuss this matter. In addition to talking about the request for an Eastlake RPZ from a historical perspective, we will be asking that the application of SEPA rules be fair and equal. It would appear that a decision to invoke a SEPA requirement for an RPZ could have far reaching implications, not just for the Eastlake RPZ but for other changes to on-street parking in both residential and commercial zones.

If RPZ's are subject to SEPA, the Eastlake Residents' RPZ Committee believes that other types of parking restrictions should be reviewed under SEPA as well. For instance, the installation of parking meters and 2-hour parking signs both add restrictions to on-street parking spaces that affect how these spaces are used and who can use them. Similarly, car-pool restrictions convert spaces in a way that gives priority to vehicles with special permits. Yet, in the past, the City has not required SEPA review for these changes.

The Eastlake Residents' RPZ Committee questions why a residential parking proposal has to go through SEPA, while parking restrictions that benefit commercial areas have been SEPA-exempt. Ironically, some Eastlake businesses, including the very ones that claim the RPZ cannot proceed without environmental review, have requested and received carpool and 2-hour parking restrictions on Eastlake Avenue between Lynn and Louisa, *without* going through SEPA.

The Eastlake Residents' RPZ Committee plans to have more to report soon on the environmental review of the RPZ. If you have questions you may call Lynn Poser (323-9257) or Carol Eychaner (324-1716).

# BIBELOTS & BOOKS

112 E. LYNN at EASTLAKE

Seattle, WA 98102 (206)329-6676

12-5:30 Tues.-Sat. & By Appointment

Now specializing in Children's Books,  
Classics, and Illustrated Books  
Shirley Schneider, Bookseller

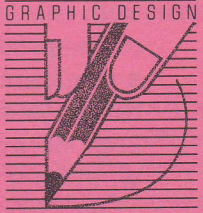
**G&H PRINTING**  
*The Corner for Fine Printing*

2370 EASTLAKE AVE. E.  
SEATTLE, WA 98102

E. LOUISA ST.

phone 329-9888  
fax 324-3705

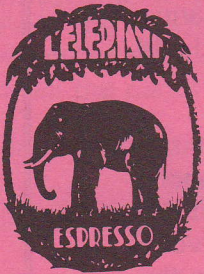
GRAPHIC DESIGN



ILLUSTRATION

2366 EASTLAKE AV. E.  
SUITE 214  
SEATTLE, WA 98102  
(206) 329-0906

*Lee Wallat*



## L'ELEPHANT ESPRESSO

ELLEN CHEVALIER, Owner  
2946 - D Eastlake Avenue East  
Seattle, WA 98102  
324 4741

*Consulting and Training Available*



## TRAVEL EXPERTS

*Your Neighborhood Full Service Agency*

• Daily Ticket Delivery to  
Office, Home & Airport

2825 EASTLAKE AVE EAST, STE 114  
**322-8334**

## MEMBERSHIP APPLICATION

Eastlake Community Council  
117 E Louisa, #1  
Seattle, WA 98102

This is a  NEW  RENEWAL membership.

DUES	
<input type="checkbox"/> Household:	\$25
<input type="checkbox"/> Senior/Student/Low Income:	\$10
<input type="checkbox"/> Business:	\$50
<input type="checkbox"/> Extra Donation	\$ _____

I'M INTERESTED IN:
<input type="checkbox"/> Parks and Open Spaces
<input type="checkbox"/> Traffic and/or Parking Issues
<input type="checkbox"/> Building Guidelines
<input type="checkbox"/> Newsletter Block Distribution
<input type="checkbox"/> Fundraising
<input type="checkbox"/> Work Parties
<input type="checkbox"/> Eastlake History
<input type="checkbox"/> Community Art Projects
<input type="checkbox"/> Coming to a community meeting to share and brainstorm more ideas!

NAME/S \_\_\_\_\_

PHONE \_\_\_\_\_

ADDRESS \_\_\_\_\_

**BIBELOTS & BOOKS**

**112 E. LYNN at EASTLAKE**  
 Seattle, WA 98102 (206)329-6676  
 12-5:30 Tues.-Sat. & By Appointment

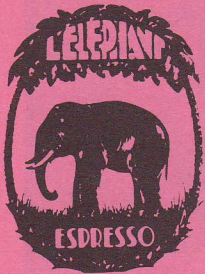
*Now specializing in Children's Books,  
 Classics, and Illustrated Books*  
*Shirley Schneider, Bookseller*

**G&H PRINTING**  
*The Corner for Fine Printing*

2370 EASTLAKE AVE. E.  
 SEATTLE, WA 98102

**E. LOUISA ST.**

phone 329-9888  
 fax 324-3705



**L'ELEPHANT  
 ESPRESSO**

ELLEN CHEVALIER, Owner  
 2946 - D Eastlake Avenue East  
 Seattle, WA 98102  
 324 4741

*Consulting and Training Available*

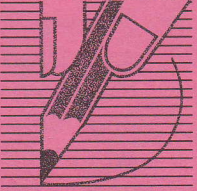
 **TRAVEL  
 EXPERTS**

*Your Neighborhood Full Service Agency*

• Daily Ticket Delivery to  
 Office, Home & Airport

2825 EASTLAKE AVE EAST, STE 114  
**322-8334**

GRAPHIC DESIGN



ILLUSTRATION

2366 EASTLAKE AV. E.  
 SUITE 214  
 SEATTLE, WA 98102  
 (206) 329-0906

*Lee Wallat*

**MEMBERSHIP APPLICATION**

Eastlake Community Council  
 117 E Louisa, #1  
 Seattle, WA 98102

This is a  NEW  RENEWAL membership.

DUES	
<input type="checkbox"/> Household:	\$25
<input type="checkbox"/> Senior/Student/Low Income:	\$10
<input type="checkbox"/> Business:	\$50
<input type="checkbox"/> Extra Donation	\$ _____

I'M INTERESTED IN:
<input type="checkbox"/> Parks and Open Spaces
<input type="checkbox"/> Traffic and/or Parking Issues
<input type="checkbox"/> Building Guidelines
<input type="checkbox"/> Newsletter Block Distribution
<input type="checkbox"/> Fundraising
<input type="checkbox"/> Work Parties
<input type="checkbox"/> Eastlake History
<input type="checkbox"/> Community Art Projects
<input type="checkbox"/> Coming to a community meeting to share and brainstorm more ideas!

NAME/S \_\_\_\_\_

PHONE \_\_\_\_\_

ADDRESS \_\_\_\_\_