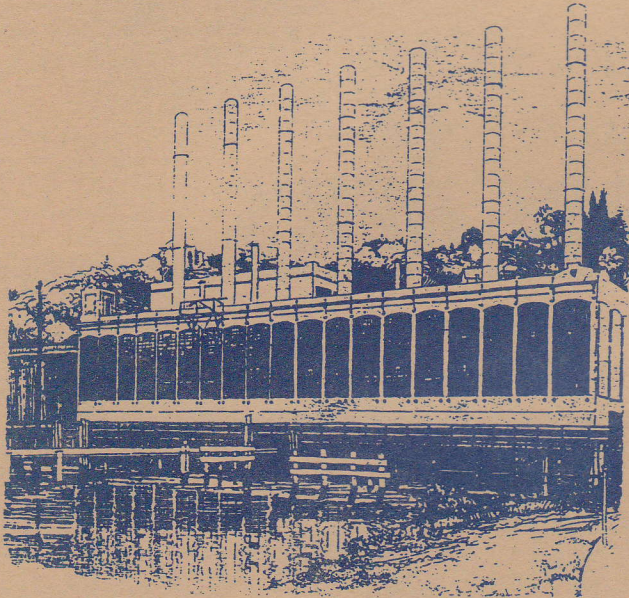


LAKE UNION STEAM PLANT -- WHAT IS A PUBLIC PROCESS?

The next chapter in the on-going saga of the redevelopment of the Lake Union Steam Plant will take place at a public meeting to be held by ECC on **June 2nd at the Seward School Gym, 7:30 p.m.** The entire process has been most curious.



It begins with former Mayor Royer's desire to complete the dream of a park at the south end of Lake Union. He was having trouble acquiring the necessary land when he happened to get together with William Justen, ex-Director of the Department of Construction and Land Use and now an officer of the Koll Development Company. A deal was cut for Koll to acquire the land needed for the park and the City agreed to swap the Steam Plant for the needed park land.

When the plan was announced it caused an uproar. After all, the city had previously participated in Eastlake meetings and released schedules in preparation for an open, public process on the re-use of the Steam Plant. Why were no other developers allowed to make offers on the Steam Plant? Why was the process hidden from the public? Why did City Hall break its commitment previously made to the neighborhood? In what appeared to be an effort to quiet the noise, a Citizens' Advisory Committee was established; but it was limited to working with and advising Koll. The committee put in a lot of time and effort and was rewarded by having its recommendations made a part of the City's Real Estate Exchange Agreement with Koll.

Some of these recommendations were:

- Develop the Steam Plant building as a mixed use building, primarily housing.

- Develop the Hydro House with a commercial use open to the public.
- Provide existing floor-to-ceiling public space in the Steam Plant.
- Provide a public access pier of approximately 3,000 square feet over water in the Fairview right-of-way.

There were other recommendations as well but it now appears that none of them will be followed in the present Koll redevelopment plan. Koll has informed the City that it can not find financing for a residential development in the Steam Plant and now proposes that the building be converted for office/lab use by ZymoGenetics, a bio-genetics research facility.

As a result of this information from Koll, the City has amended the Real Estate Exchange Agreement to extend the closing date "on the following conditions:

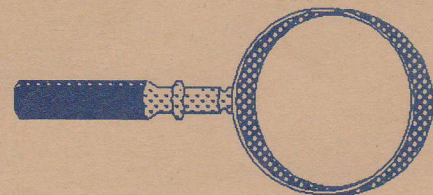
- That Koll agrees to engage in a public process to evaluate Koll's proposed change of use ... "

We wish we could explain to you exactly what the "public process" is and just how it will work, but we confess, we cannot. We only know this "public process" began May 12 and concludes July 12. We invite you to join us at the June 2nd meeting to air the issues and once again develop community positions on the process, the Hydro House and the Steam Plant.

JUNE 12: EASTLAK TOMORROW

Town Meeting and Neighborhood Slide Show Scheduled--Help set neighborhood planning priorities by participating in a *Town Meeting* at the Seward School Gymnasium on **Friday, June 12** from 7:00-9:30 p.m.

This is your chance to hear what your neighbors have to say about key issues identified by the "Community Sounding" interviews. A "visual preferencing" slide show using slides taken by Eastlake residents will be led by Urban Designer Bill Isley of Hewitt/Isley Architects.



The Town Meeting will include a summary of interview results from the Sounding as well as workshops on key issues such as shorelines, population density, development and traffic. It will conclude with a participatory slide show and discussion on planning and design guidelines. The goals of the Town Meeting are to set neighborhood planning priorities and begin to develop a framework for future land use planning in Eastlake.

Volunteers will be recruited to participate in an urban design charette later this summer to be led by Bill Isley. The charette will be a forum for residents to work closely with Isley in applying the findings from the Community Sounding to the development of a Framework Plan for Planning and Design Guidelines.

The Community Sounding is Phase Two of the *Eastlake Tomorrow* Neighborhood Planning project made possible through 1991 and 1992 Seattle Neighborhood Matching Fund grants. During the Sounding teams of residents set out to conduct small group interviews with approximately one-third of the people who live or work in Eastlake. Interviews were also conducted with city agencies and other individuals concerned with comprehensive planning. Participants at the June 12 Town Meeting will refine the data collected through interviews into neighborhood planning priorities.

The "Community Sighting" is the visual side of the Community Sounding. Eastlake Community members are invited to pick up a free roll of 35 mm film at the Sonya Komen Salon, 2501 Eastlake Avenue East (corner of Eastlake and Louisa), Tuesday - Saturday from 10 a.m. through 6 p.m.; or evenings at the Huber residence, 2300 Yale (corner of Yale and Lynn).

Please return your undeveloped film or developed slides by May 30 to either location.

The goal of the Community Sighting is to find out what buildings, homes, places, objects, streets, and alleys people like and dislike in Eastlake. The slides will be developed and presented at the June 12 Town Meeting where participants will be asked to vote for the best and the worst in Eastlake.

Anyone who would like to participate in the Community Sounding and Sighting is encouraged to call the *Eastlake Tomorrow* Committee at 322-2499.

JUNE 4: TAVERN/RESTAURANT NOISE IS A GROWING PROBLEM

Noise from local taverns and restaurants seems to be a growing problem, and not just because of the warmer weather. Residents are beginning to meet with one another to share information and find ways

to gain better cooperation from business owners. One such meeting will be held on *June 4* at 6 p.m. at 2525 Minor Avenue E. (the Minor Tower). If you cannot come and would like to get involved, call 325-2068. If you would like to hold a similar meeting in your area or have some ideas on how to deal with this problem, write to Noise, c/o ECC, 117 E. Louisa #1, Seattle 98102.

JUNE 17: LAND TRUST GEARS UP TO SAVE OLD, AFFORDABLE HOUSING

The loss of the Farm House and the "three pigs" houses is a reminder of the need to plan ahead to save what is left of Eastlake's affordable charm. On *Wednesday, June 17, 7:30* at 2517 Eastlake Ave. E., the Eastlake Community Land Trust will meet to discuss possible sites for future projects. Have one in mind? Come and tell us--photographs welcome. For information, call Amy Wicklund, 322-7961.

The July meeting is on *July 15, 7:30 p.m.*, at the same place.

JUNE 18: EASTLAKE PERFORMANCE SERIES BEGINS WITH YOUTH CONCERT

Eastlake children and youths will show their stuff with a rousing concert of solo and ensemble playing and singing. Confirmed so far is the jazz group based on students from Washington Middle School, the Green Olives and Red Hot Pimentos (sax and piano). Rumors are that there will also be dancing and solo singing. Parents should encourage their children to volunteer for this low-pressure event; contact Les Grinnell, 324-8667, 2356 Franklin Ave. E. for information. The event will be held *Thursday June 18* at 7:30 at the Academy of Universal Truth, Eastlake's only church, which is located in the Seattle Police Officers Guild building at 2517 Eastlake Ave. E. If this event works, we'll even allow the adults to get into the act. *Don't miss it!*

TOWARD SAFER STREETS IN EASTLAKE

Eastlakers were dazzled by the creative suggestions from Prof. Richard Untermann at our February 18 meeting on how to redesign Eastlake's streets to be more friendly to pedestrians, bicyclists, and local traffic. Now Untermann has offered to help in preparing some drawings of possible measures. Also, the Harborview Injury Prevention Center is considering Eastlake for a major project jointly with the Police Department to slow down traffic and make intersections safer. Your written suggestions are helpful in both efforts; please continue to send them to Traffic Calming, c/o ECC, 117 E. Louisa #1, Seattle 98102.

Purpose of the Eastlake Community Council

In the 1970s shortly after it was founded, the Eastlake Community Council adopted a statement of purposes that is as useful as ever today:

- o Encourage and enjoy a sense of community in this neighborhood;
- o Work to highlight and preserve the history and the things that make Eastlake a good place to live and work;
- o Provide a clearinghouse for information on governmental and private programs that affect our community;
- o Be an action group to initiate and encourage programs and projects that will enhance our day-to-day existence;
- o Work for the preservation and public enjoyment of the shorelines;
- o Work with other groups to improve the quality of life in the city as a whole.

Eastlake Zoo

...where animals party



2301 Eastlake Ave E
329 - 3277

Pool • Darts • Shuffleboard
Pinball • Snooker

Over 20 non-alcoholic beverages

SPECIALIZING IN FINE QUALITY

*Rare and Used
Illustrated Books
Children's Books
Mysteries & Classics*

*American Pottery:
Fiesta, Harlequin
Roseville, Weller
Rookwood Etc.*

BIBELIOTS & BOOKS

MAIN STORE: 112 E. LYNN at EASTLAKE

Seattle, WA 98102 (206) 329-6676
12-5:30 Tues.-Sat. & By Appointment
Snohomish Star Center Mall
Space 59

The Corner For Fine Printing



329-9888



Dandy Custom Craftsmen Inc.
258 East Edgar Street Seattle, Washington
323-6973

Renovation & Remodeling Experts
Call us! We're in the Neighborhood.

BREAKFAST OR LUNCH

Buy One meal at regular price,
receive a 2nd of Equal or
lesser value for 1/2 price

1/2 OFF



Open Daily 7-3 for Breakfast & Lunch
Breakfast all day Sunday
Breakfast until 12:30 pm Sat
Breakfast until 11:30 am M-F

2305 Eastlake Ave - Ph: 324-1442
valid Mon thru Fri : Dine in only



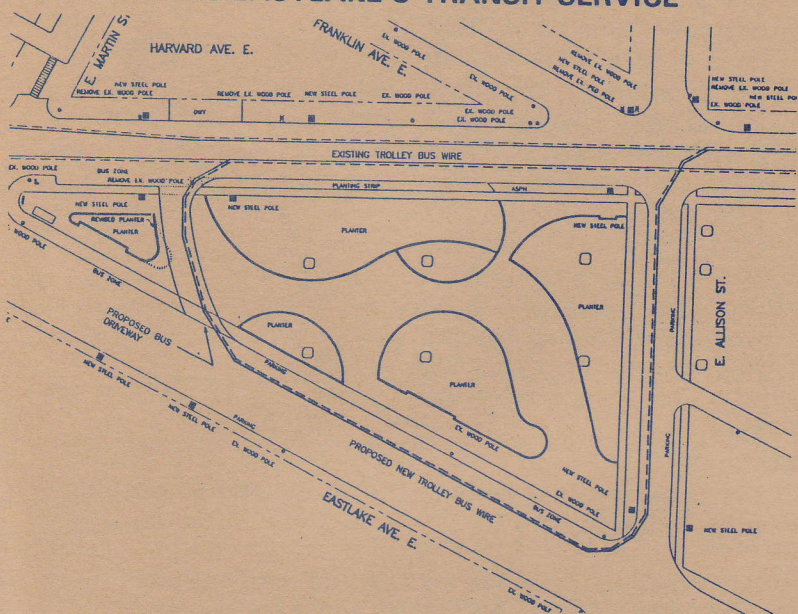
**TRAVEL
EXPERTS**

Your Neighborhood Full Service Agency

• Daily Ticket Delivery to
Office, Home & Airport

2825 EASTLAKE AVE EAST, STE 114
322-8334

IMPROVING EASTLAKE'S TRANSIT SERVICE



At the ECC general meeting on May 12, representatives from Metro discussed plans for the Eastlake transit service and also outlined proposals for introducing rail service in the Seattle area. Immediate plans include terminating trolley line 7 at Allison and Harvard (today it goes to the University District) and **making line 70 a trolley line**. These plans are not definite--if you want to reduce diesel fumes in your community, **write to Cynthia Sullivan**, 402 King County Courthouse, 516 Third Avenue, Seattle 98104, **and/or to Norm Rice**, 600 4th Avenue, Seattle 98104, **in support of line 70 as a trolley line**.

NOMINATIONS SOUGHT FOR ECC POSITION OF HISTORIAN

Best wishes to Ann T. Rohlffs, who has resigned her position as ECC historian in order to move to Idaho. If you or a friend is interested in helping with ECC's history effort to preserve the memories of Eastlake's living pioneers, please send the nomination with background to Historian Nominations, c/o ECC, 117 E. Louisa #1, Seattle 98102.

AROUND EASTLAKE

Results from the census 1990--our community seems to be growing! In 1990, there were:

- 3585 residents (+ 11.2% since 1980)
- 2314 households
- 498 families (+ 75 since 1980)
- 132 children 15 years or younger (+ 15% since 1980)
- of these children, 69 were 4 years or younger
- 74.4% of the units were rentals (down from 84.2% in 1990).

Did You Know--that the 322 prefix on many Eastlake telephone numbers stands for EAstlake??

The Greens Come to Seattle--On Wednesday, May 13th about forty people gathered to listen to a new political alternative to either democrat or republican. That alternative was presented as the Greens, a movement which is working to create sustainable alternatives to the social and ecological crises of our times.

The movement in Washington has groups in Spokane, Wenatchee, Bellingham, Tacoma, Olympia and now Seattle. The Greens place the highest value on grassroots democracy and seek support and encourage participation regardless of race, ethnicity, income level, sex, or sexual orientation. When soliciting input from the audience some of the issues put forth ranged from community development projects in the Central District, offering alternatives to Bush's Weed and Seed project, to placing candidates in local and state offices.

The Greens truly offer a value-based politics, in contrast to politics of domination, consumption, and competition controlling society today. The Greens offer an expanded definition of ecology: one that recognizes the intimate relationships between social and environmental issues.

The Greens currently hold political offices in the U.S. and in many other countries around the world. The Green movement is growing in Asia, Africa, the former USSR, South America and some 24 other countries. Green Party organizing, on the local and state level, is one of the newest and most exciting Green developments in this country.

There are currently over 300 local Green groups in the U.S. representing thousands of active members. The first Green political party was established in Alaska last year which was soon followed by California.

The group meets regularly, twice a month on the 1st and 3rd Monday at 8618 Roosevelt Way NE at 6:30 p.m. Next meeting is Monday, June 1 and June 15. For more information please call 526-2919.

Chevy (323-7150; contact person)

CLASSIFIED ADS

Responsible neat nonsmoking prof'l couple w/ child seeks house-sitting opportunity during remodel July-Oct (3-wk min preferred). Woody 523-0841

NEIGHBORHOOD

We are pleased to print this lovely poem by Eileen Roat Neilson, who grew up in Eastlake in a waterfront home at the approximate location of South Passage Park (under the freeway bridge). Many thanks to her mother Beulah Roat for sending us the poem. The Eastlake News is pleased to print other poems, short stories, and drawings as space permits.



WEeping Willow

Ivar's Salmon House now stands
Where a log boom used to be,
And diners gaze across the lake
At a lonely willow tree.

If they could know about the past,
They'd see homes with lawns and firs
Amid the gardens that produced
Azaleas and junipers.

Some deep-rooted families
Resided there years ago,
Before the I-5 Bridge was built
To level their homes in a row.

The laughter used to echo
Across the water in times gone by,
As we children swam and played
All day under the sunny sky.

Dad put a hammock between two piling
About thirty feet from shore,
Where we could sun ourselves and read
Until he arrived home at four.

A boat ride then provided more fun
With the dinner mother prepared.
Life on the lake was most unique
And more joyful when it was shared.

Each passing boat, whose name we knew
As well as the size of its wake,
Caused us youngsters to swim out fast
To reach the largest wave on the lake.

Aquila, as well as Zimmie
Were two of the very best.
Then Ptarmigan and Silver Heels,
Virginia V and Sea Rest.

Before then, in the late Twenties,
Canoes were for rent to all,
Where Mr. Paulo furnished each lady
With a paper parasol.

We were able to clearly see our toes,
No matter how far we'd wade
To watch the bullheads scurry away
From the footprints we had made.

The boats selling meat and produce
And bakery goods are all gone.
It was an easy way to go shopping.
Mother just walked out on to the lawn.

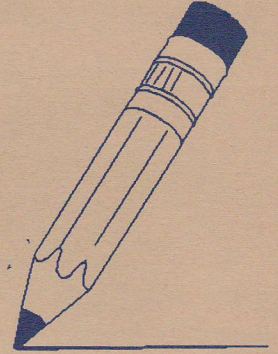
Today at age ninety-four
She goes back "down the lake"
To remember the times since '21,
And the turns a lifetime can take.

Pleasure and gratitude fill our hearts
For the heaven we all shared.
Today the landscape looks as though
No one really cared.

And, Ivar's Salmon House now stands
Where a log boom used to be.
And diners gaze across the lake,
At a lonely willow tree.

Eileen Roat Neilson

Classified Ads should be between one and four lines with a maximum of 45 characters per line, including spaces and punctuation. To advertise, mail your ad to ECC Advertisement, 117 E Louisa St. #1, Seattle WA 98102. Ads cost \$3 per line. Ads must be prepaid. Deadline for the next issue is June 25. Ads about carpooling are free.



For business ads, write to the above address or leave a message at 329-5030.

MEMBERSHIP APPLICATION

Yes!!! I want to take care of Eastlake. My dues are enclosed for membership in the Eastlake Community Council (1 year membership).

This is a NEW RENEWAL Membership. VOLUNTEER INTERESTS _____
NAME _____ PHONE _____
ADDRESS _____

- DUES Household (\$25)
- Sr. Citizen (\$10)
- Business (\$45)
- Donation \$ _____

Make Check or Money Order payable to:
EASTLAKE COMMUNITY COUNCIL
ECC, 117 E. Louisa St. #1, Seattle WA 98102