

Eastlake
Community
Council

117 E Louisa St. #1
Seattle, WA 98102

FREE-Take One

Time to renew?
Your membership
expires on the
month and year
printed in your
label's upper right
corner.

April 1992

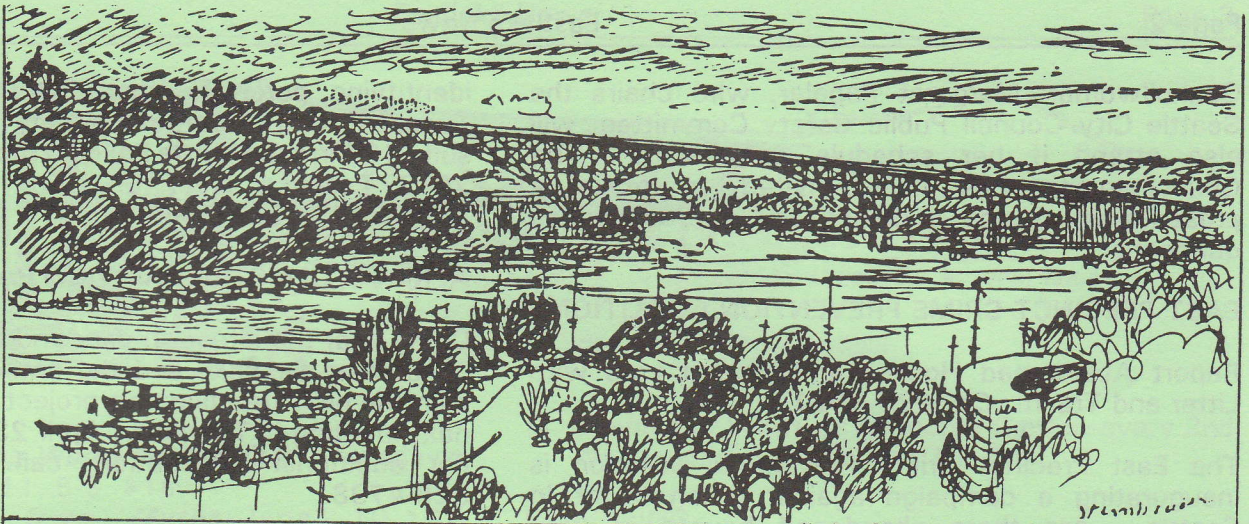
Board Members

Chris Leman,
President
Donna Hainer,
Vice President
Estelle Mitchell,
Treasurer
Barbara Zegar,
Secretary
Ann Rohlffs,
Historian
Milton Clifton
Janice and Ron
Ellis-Dick
Shari Hirst
Joy and David Huber
Denni Shefrin
Michael Sullivan

Editor:

Robert afSandeberg

Eastlake News is
distributed free to
residents of the
Eastlake Community
and members of the
Council.



EASTLAKE NEWS

UPCOMING EVENTS

- April 21,** Eastlake Community Land Trust, 7 p.m. Tuesday at the Academy of Universal Truth, 2517 Eastlake Ave in the Seattle Police Officers Guild building.
- April 22,** ECC General Meeting on Crime Control, 7 p.m. Wednesday in the Seattle Police Officers Guild, 2517 Eastlake Avenue E.
- April 23,** Olmsted-Fairview Park Commission, 7 p.m. Thursday at Tio's Bakery.
- April 26,** Eastlake Tomorrow Open House, 3:30-5:30 p.m. Sunday at Tio's Bakery.
- May 12,** ECC General Meeting. 7 p.m. Tuesday in the Seattle Police Officers Guild, 2517 Eastlake Avenue E. Topic: Improving Eastlake's transit service.
- June 12,** Town Meeting--the next major step in the Eastlake Tomorrow neighborhood planning effort.

APRIL 22: CRIME CONTROL

Take a bite out of Eastlake crime at the April general meeting.--Crime is a growing problem in our neighborhood and a primary concern of Eastlake residents. Burglaries, car prowls, transients, drug trade, prostitution and even gang activity are all on the rise.

Come find out how crime is affecting Eastlake and how to avoid becoming a victim at the next general meeting, **Tuesday April 22 7-8:30 p.m.** at the Seattle Police Officers' Guild, 2517 Eastlake Avenue E. Barbara Henderson, a Seattle Police Department crime prevention coordinator, and Officer Daniel Enriquez, of the SPD Community Police Team, will present information on neighborhood crime statistics, trends, and prevention techniques (including block watches). There will also be a question and answer period.

← Location of burglaries October-December 1991



Councilwoman Margaret Pageler, who chairs the Seattle City Council Public Safety Committee, will also attend if her schedule permits it. The Councilwoman has been invited to make a presentation to the audience and to respond to questions.

EAST PRECINCT CRIME PREVENTION COALITION

Report Abandoned Houses and Vacant Lots with Litter and Trash! **Call 325-BUST.**

The East Precinct Crime Prevention Coalition is inaugurating a campaign against urban blight in Seattle. Are there abandoned houses in your neighborhood? Vacant lots strewn with litter and trash?

Don't just drive by these eyesores in our city! Report addresses of abandoned houses or litter filled lots being used for dumping grounds by calling **325-BUST**, our non-emergency hotline. The Coalition will be sponsoring clean-ups in several of the East Precinct neighborhoods this spring and we want to encourage enforcement of property maintenance regulations. We are compiling lists and creating maps of the blight areas in the city.

We need your help! By reporting abandoned or unsightly properties you will contribute to making Seattle a more liveable city.

For more information, contact Denise Harnly 728-0903 or Dale Rowe 325-3520. Or write to NEIGHBORHOOD CRIME & JUSTICE, 500 Wall Street, Suite 315, Seattle 98121.

APRIL 21: EASTLAKE COMMUNITY LAND TRUST

This growing organization seeks to promote more housing opportunities for those on low incomes and with special needs, while helping to preserve Eastlake's oldest structures. Volunteers are needed for fundraising, organizing, paperwork, and

identifying potential sites. Our next meeting is Tuesday, April 21 at the Academy of Universal Truth, suite 103 in the Seattle Police Officers Build building, 2517 Eastlake Ave. E. For information, call 329-1312 or 322-5463.

APRIL 23: OLMSTED-FAIRVIEW PARK COMMISSION

Come hear the latest on park and open space issues concerning Eastlake and the entire City. And help plan the next tree planting project for Eastlake. Our next meeting is Thursday, April 23, 7 p.m. at Tio's. For additional information, call Nancy Pritchett, 328-4798.



COMMUNITY SCHOOL

The very first session of the Eastlake/TOPS Community School is scheduled to open Tuesday April 14! This project has been funded by the Seattle Neighborhood Matching Grants Program and inkind donations from the Eastlake Community and TOPS.

Classes are open to children and adults. Please check out the listings below and register today for the class of your choice.

- **Jump into Spring**--Wednesdays, 8-8:50, \$15

MUSIC CLASSES

- **Harmonica Playing: Beginning to Advanced**--Tuesdays, April 14-June 9, 3:30-4:30 (one class) or 5-6 (another class). \$37.50-adults/\$25-children
- **Piano level 1**--(adults), Tuesdays, April 14-June 9, 6-7. \$35 + \$16 for materials
- **Piano level 2**--(adults), Wednesdays, April 15-June 10, 6-7. \$35 + \$16 for materials.

ART, DRAMA AND CREATIVE WRITING

- **Seattle Children's Theater Classes**--1.5 hour session for 8 weeks. \$125

EASTLAKE TOPS COMMUNITY SCHOOL

2515 Boylston Avenue East
Seattle, Washington 98102
726-9128

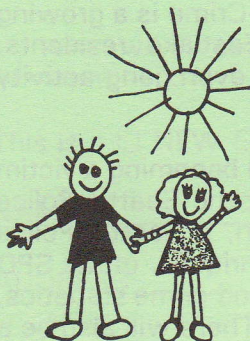
**SPRING QUARTER 1992
REGISTRATION FORM**

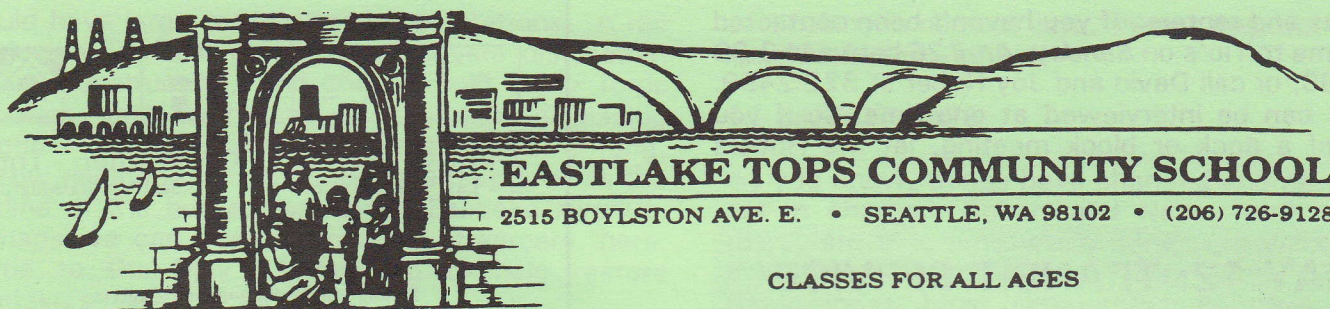
Name _____ Work Phone _____ Home Phone _____

Address _____ City _____ Zip _____

Today's Date Class Title Time/Day Tuition Reg. Fee Mater. Fee

Today's Date	Class Title	Time/Day	Tuition	Reg. Fee	Mater. Fee





CLASSES FOR ALL AGES

- **Creative Writing Workshop**--(adults), Thursdays, April 16-June 11, 5-6. \$15
- **Paint Your Own Myths**--(age 10-16), Wednesdays, April 15-June 10, 3:30-5:30. \$30 + materials
- **Paint Your Own Myths**--(adults), Thursdays April 16-June 11, 6:30-8:30. \$50 + materials
- **Ceramics**--Tuesdays April 14-June 9, 6-8. \$40 + \$7 for materials
- **Batik**--Thursdays April 15-June 10. \$30 + \$35 for materials
- **Tapestry**--Tuesdays April 14-June 9, 6-7:30. \$30 + \$28 for materials
- **Project Self Exposure**--Photography, Thursdays April 16-June 11, 5-7. \$40
- **Beginning Jewelry Making**--Wednesdays April 15-June 10, 6-8. \$35 + materials
- **Portrait Photography**--Wednesdays, 7-8:30. \$30

BUSINESS CLASSES

- **Rent Free!**--Wednesday, April 8, 6-9. \$13
- **Rent Smarter**--Wednesday May 13, 6-8:30. \$10

COMPUTER CLASSES

- **Introduction to DOS 5.0 and PC Compatibles**--Tuesdays, 7-8. \$35
- **Beginning BASIC Programming**--Tuesdays, 3:30-5. \$25
- **Introduction to C**--Tuesdays, 5:30-7. \$35
- **Introduction to Microsoft Works**--Wednesdays April 15-May 4, 6-7:20. \$35
- **Introduction to DOS**--Wednesdays April 15-May 4, 7:40-9. \$35

FOREIGN LANGUAGE

- **Conversational Spanish**--Tuesdays and Thursdays April 14-June 11, 6-7. \$25
- **French for Beginners**--Wednesdays 6-6:50. \$30
- **Spanish for Beginners**--Wednesdays 7-7:50. \$30

HEALTH AND FITNESS

- **Red Cross CPR/Standard First Aid**--2 Thursdays June 21 & 28, 5-9. \$25 + \$10 materials
- **Alternatives in Healthcare**--Tuesdays April 14-May 12, 6-7. \$17
- **Women's Health Issues**--April 15 and May 6, 6-8. \$10 per session
- **Nutrifit**--Tuesdays April 14-June 9, 7-8. \$30

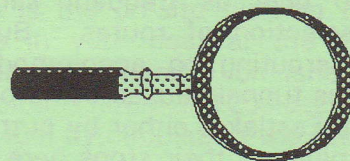
- **Health and Wellness Resource Center**--every 2nd Wednesday starting April 15, 7-9.

PARENTING

- **D.A.R.E for Caregivers**--Thursdays April 16-May 7, 7-8. \$25
- **Virtues**--Wednesdays, April 14-June 10, 7-8. \$15 per family
- **Support Group for Children**--Wednesdays April 14-June 10, 7-8. Free

APR 26: EASTLK TOMORROW

The Eastlake Tomorrow Town Meeting has been rescheduled from Sunday, April 26 to **Friday, June 12**. But April 26th is still a date to reserve! Tio's, normally closed on Sundays, has generously donated the Bakery for an "Eastlake Tomorrow Open House" from 3:30 to 5:30. If you live or work in Eastlake, you're welcome to drop in for coffee and pastries. This is a great time to sign the RPZ Petition and/or be interviewed for the Community Sounding. You will also have a chance to find out more about the "design review process" and help plan the Town Meeting.



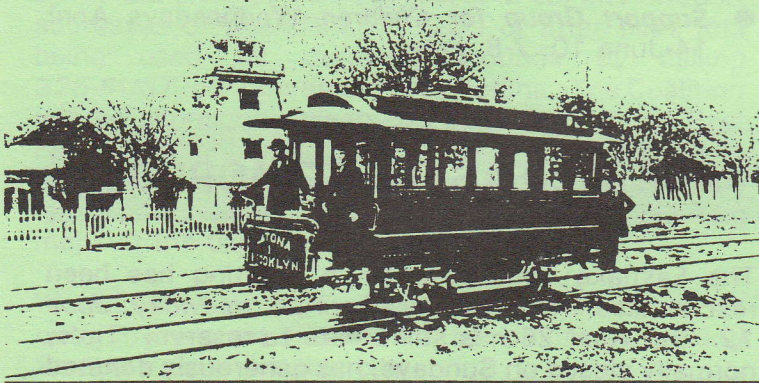
So far the Community Sounding--the campaign to prepare for the Town Meeting by interviewing 1,000 people who live or work in Eastlake about their vision for Eastlake's future--has succeeded in reaching about 300 residents and business owners. According to the about volunteers conducting the interviews, everyone interviewed has said that they really enjoyed the experience. The questions were developed by the 40 volunteers at a training workshop and are stimulating and easy to answer.

EVERYONE'S HOPES AND DREAMS FOR THIS COMMUNITY ARE IMPORTANT! In particular, the Sounding needs more representation from college

students and renters. If you haven't been contacted yet, come to Tio's on **Sunday, April 26** between 3:30 and 5:30, or call David and Joy Huber at 322-2499. Groups can be interviewed at one time, so if you know of a dock or block meeting, let the Hubers know.

MAY 12: TRANSIT SERVICE

Improving Eastlake's transit service--At this meeting--to be held **Tuesday, May 12** at Seward School, 7 p.m.--we will hear from Metro representatives and others about bus and rail planning and how it affects Eastlake, including a proposed electric turnaround at Allison Street between Eastlake and Harvard.

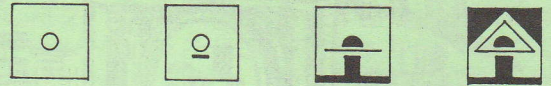


Courtesy of University of Washington Historical Photography Collection

Eastlake was founded a century ago on streetcars (the picture was taken in 1892 or 1893, near what is now the Steam Plant). We continued to depend on the electric trolley buses that replaced the streetcars in 1941. When the overhead electric lines on Eastlake Avenue were removed in 1963, diesel buses continued to give us frequent service with an impressive selection of routes. But times have changed. Rerouting to accommodate the new downtown bus tunnel caused some of our longtime buses to skip Eastlake, either by putting them onto I-5 or by eliminating their stops here, leaving noise and pollution in their wake. Eastlake's transit service is now the worst in our long history.

In the late 1980s, Metro promised to restore the overhead electric lines to bring back quiet, nonpolluting trolley buses--but the funds instead were put downtown into the waterfront streetcar. Even the modern new "dual mode" buses that travel electrically through the bus tunnel must use diesel while in our neighborhood. Hundreds of buses a day that serve no Eastlake passengers pass through or park in the neighborhood.

Metro's proposed new regional transit system would take decades to complete and, as so far proposed,



Dandy Custom Craftsmen Inc.
258 East Edgar Street Seattle, Washington
323-6973

Renovation & Remodeling Experts
Call us! We're in the Neighborhood.



TRAVEL EXPERTS

Your Neighborhood Full Service Agency

- Daily Ticket Delivery to Office, Home & Airport

2825 EASTLAKE AVE EAST, STE 114
322-8334

BEAUTYWORKS

Hair Design

Steve Frodsham
329-9007
2701 Eastlake East
Seattle, WA 98102


Eastlake Zoo

...where animals party

2301 Eastlake Ave E
329 - 3277

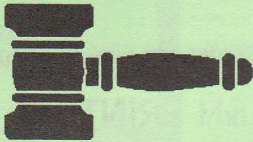


Pool • Darts • Shuffleboard
Pinball • Snooker

 Over 20 non-alcoholic beverages

would have large, widely separated stations. A rail station in Eastlake would cause severe dislocation during construction, and then would likely force upzoning and high-rise development displacing longtime residents and businesses. As a long, narrow neighborhood, Eastlake needs to reverse the decline of the bus service along Eastlake Avenue. Perhaps we can even restore the streetcars there. Come to the May 12 meeting to help restore Eastlake's transit service.

REVISION OF ECC'S BYLAWS



Your Ideas Needed--The Eastlake Community Council's bylaws have changed little since they were adopted in 1971, and it is time to revise them. Write us if you would like a copy of the bylaws, send us your suggestions for revision, and let us know if you would like to help. Write to Bylaws Revision Project, c/o ECC, 117 E. Louisa #1, Seattle 98102, or call George Gabriel at 324-4061.

AROUND EASTLAKE

Lost bird--During our warm spell at the end of March, one of the neighborhood's best-loved senior citizens lost her pet cockatiel. The bird, which is larger than a parakeet and is pink with an orange crown, is friendly. If you have seen it, write to Lost Bird, c/o ECC, 117 E. Louisa, Seattle 98102.

Lost farmhouse?--A financial angel may be all that can prevent the demolition of the classic farmhouse at 102 E. Louisa for construction of luxury condos. Please, if anyone can help, write immediately to Doomed Farmhouse, c/o ECC, 117 E. Louisa #1, Seattle, 98102.

Oilsmart campaign--Walker Richer & Quinn, the Eastlake Software Company, has been awarded Silver Medals for *Best long-term non-motorized program (bike, walk)* and for *Highest overall employee participation for a medium-sized company*.

Clean up in Eastlake--During the week of April 18 to 26, Mayor Rice is again sponsoring Spring Clean, when citizens clean up the public places in their neighborhood with the help of City litter bags and free hauling. Eastlake's parks and shorelines are

particularly in need of care. ***Please help tidy up your neighborhood!***

14 CARROT CAFE

As you know, things have changed and new people are in charge. Robert and Nancy took over the restaurant at a time when things are worse than I ever remember in the many years since I've been in the business. Most restaurants in Seattle are having a very hard time now and it is clear we won't all survive.

If there still exists in the community any of the good will that got me off to a good start back in 1978, I would ask that it be shown in terms of support for Robert and Nancy and the 14 Carrot Cafe, right now, especially Monday through Friday. Very few neighborhoods have restaurants like Julia's. Don't you think it is worth saving Eastlake's own and the original?

Sincerely,
Julia Miller

NEW EASTLAKE BUSINESS CLEANS UP DIESEL FUEL

Fluid Filtration Services, Inc. is a new Eastlake business started by Charlie and M.J. Loznak, owners and operators, on February 7, 1992.

We decided on this, not only because it means getting to hang out around boats, but because it is ecologically sound. It makes more sense to clean the fuel if possible and use it, than to have it hauled away and dumped.

Our business is the on-site filtering of diesel fuel, whether it is in your boat at the dock or in an emergency power generator on land. Our mobile equipment includes filters and coalescers which clean the tank and fuel by circulating the fuel at high flow rates which agitates and then carries out the contaminants.

A WALKING TOUR OF EASTLAKE 2012

As I was strolling down Eastlake the other day, heading for the fresh produce market on the Lynn Street Hill Climb, a stranger with an accent approached me and asked for directions to "the famous Lake Union floating bird islands". I told him that if he walked to the next corner and looked down the hill he could see one of them. As we strolled along the planted street he admired the flowers and watched people with cups of coffee, newspapers and briefcases, collect on the corner ahead. "Where are the people going?", he asked. I told him that there was an electric train station on the next corner and people were waiting for 10:20. I explained that the trains only came every twenty minutes after rush hour ended. Just then one of the yellow

warning lights started blinking. The light announced the approaching train. The trains with their teflon wheels and silicone dampened track were so quiet that it was easy to be surprised by their approach. The Eastlake Woonerf, a mall-like boulevard, was so heavily used by pedestrians that the lights were a simple reminder of approaching trains. Although the conductor would blow the whistle if someone were in the meandering right of way. I told the stranger there had never been an injury accident in Eastlake.

As we reached the corner, the stranger looked up the Lynn Street Hill Climb and muttered something. I think he was surprised. The street was a collection of small shops, restaurants and outdoor market stalls. A service road went up one side flanked by a winding cobble stone foot path. On the side opposite the road was a covered people mover that took pedestrians all the way up the hill over the new freeway lid to Broadway Avenue on Capitol Hill. The whole spectacle was very colorful. A tradition that had been started early in the Hill Climb's development dictated that each business be designated by a flag or banner. The mix of colored flags and banners made the street look like an impressionist painting.

My guest asked questioningly, "when was this built?" I said the planning started in 1994. What I was about to describe would not have been thought possible a short twenty years ago. But then, back in 1992, we were on the edge of a crisis that no one could ever have predicted. The combination of environmental, economic and political problems that started in the summer of 1992 made everything change. The summer of 1992 was the hottest ever on record in North America, and I don't just mean the weather. Over the summer, a new political party came into being. This party was at once so radical and at the same time so conservative that it defied logic. The election was close because it was difficult to vote for the new, young, unknown candidates. The ticket became known as "the no name ticket of 1992". Maybe you remember the summer of 1992, the conventions, the name calling, the riots. In retrospect, the election of 1992 was a kind of revolution.

I moved here to Eastlake in 1972 so I know how much different our neighborhood is now. After the 1992 election, as national government and national priorities changed, so did state and municipal governments. In fact when the U.S. government was finally forced to sign the United Nations Green House Treaty in 1994, it changed everything.

But it was the change in transportation that meant the most to the Eastlake community. Living in the suburbs and commuting became so expensive and time consuming that transportation had to change. Congress passed bills for public transportation in 1993 and 1994. When Boeing and Microsoft formed their new transportation company MSB TRANS in 1994, things really started moving. With the regional transportation system a virtual reality, Eastlake was on the map. It didn't take a genius to figure it out. Just a look at the map. We were a major transportation corridor for both low level and high level transportation, Interstate 5, State Route 520 and Eastlake Avenue, all links in the inevitable transportation system.

When the first MSB transit terminal was built over the I-5 and State Route 520 interchange the Eastlake community started to change dramatically. The lid and transit station also included commercial space, low cost housing and Steinbrueck Park. That's when the developers stopped developing the suburbs and start building new homes in the city. That's when Eastlake and Capitol Hill became real neighbors again. As each section of the freeway got covered with a new lid, a new section of housing developed. Our density increased dramatically. But the improvements that the development brought were worth it. At the same time, all the traffic noise and freeway pollution began

SPECIALIZING IN FINE QUALITY

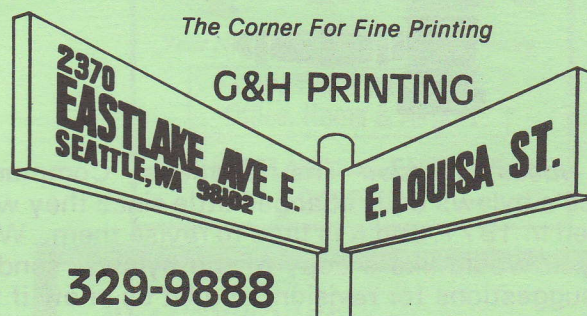
*Rare and Used
Illustrated Books
Children's Books
Mysteries & Classics*

*American Pottery:
Fiesta, Harlequin
Roseville, Weller
Rookwood Etc.*

BIBELIOTS & BOOKS

MAIN STORE: 112 E. LYNN at EASTLAKE

Seattle, WA 98102 (206) 329-6676
12-5:30 Tues.-Sat. & By Appointment
Snohomish Star Center Mall
Space 59



KEITH MAGNUSON'S RALLI-ROUND

1512 FAIRVIEW AVE. EAST
SEATTLE, WA 98102
PHONE 323-8000

IMPORT CAR SERVICE SINCE 1965

WE SERVICE THESE IMPORT CARS:
ALFA ROMEO, AUDI, BMW, FIAT,
HONDA, LANCIA, MAZDA, MERCEDES,
MG, PEUGEOT, PORSCHE, SAAB,
SUBARU, TOYOTA and VOLVO.

ALL WORK IS BACKED BY A SIX-
MONTH/6000-MILE WARRANTY.

IF YOU ARE LOOKING FOR FRIENDLY,
COURTEOUS, QUALITY SERVICE,
PLEASE TRY US. MENTION

THIS AD TO RECEIVE
A 10% DISCOUNT
ON PARTS YOUR
FIRST TIME WITH US.





J. Scott Rohrer
Yard Manager

△ Lake Union:
2370 Fairview Ave. E.,
Seattle, WA 98102
(206) 323-2405
FAX: (206)328-0655

to disappear. That's when the Eastlake Hill Climbs were started.

Never had Eastlake citizens and the city government been asked to move so quickly. Eastlake was the first neighborhood to undergo the changes that made Eastlake what it is today, a small town on an urban lake in the middle of a huge city--a unique place, and a regional crossroad. Eastlake had been a neighborhood in transition for years. Eastlake had been making tough land use decisions for years. Eastlake was organized and willing to make changes as long as the community could participate in the design. That's why the local governments and private developers selected Eastlake

for a density increase project. There was, of course, a huge fight over how the density increase quota could be met. Yet if we accepted higher density there would be huge tax incentives to developers, residents and many benefits to the community. That's why the Seward Community Center has a K - 8 school, day care, and a neighborhood gym and swimming pool. We moved fast and got the benefits. Make sure you drop by to see "The Center" before you leave. It's spectacular. Seward has become the center of our community, like our town hall and city center all in one. The Plaza on Eastlake is wonderful. In a few weeks there will be a salmon feed and community art show; it's an annual event. People from all over the city come for the event.

By the time construction started on the I-5/520 MSB Station everyone knew that density had to be increased to meet our community goal so we could have all the tax breaks and benefits. One of those benefits was the Lynn Street Hill Climb project. It really was something special because it incorporated public, private, commercial, residential, and recreational space in a project never before tried. It provided jobs, increased density, and gave affordable view homes to the ordinary citizen. All of this was done while improving the neighborhood and involving the community. This was the activity that started rebuilding people's trust and confidence in the government.

The Lynn Street Hill Climb connected Eastlake Avenue with the new blocks of private development up the hill on the lid over the freeway. The Roanoke Hill Climb connected the light rail system on Eastlake with the new community center at Seward School and the adjacent complex built around the I-5/520 MSB Station. When Steinbrueck park was completed, it provided the Capitol Hill and Eastlake communities with new playfields, tennis courts, planted walking paths, pea patches and viewing areas. All the new development on the lid had fabulous views of the lakes, city and mountains. The Eastlake Hill Climbs created two pedestrian connections with our old neighbor Capitol Hill and reclaimed space, views, and land that had been taken from the public and private use years before.

By the time the Hill Climb design was complete, the Seattle Light Electric Rail had already been installed on Eastlake Avenue. All of Eastlake Avenue was planted and landscaped when the rail line was installed. The pedestrian quality of the neighborhood changed so greatly during those years that few people would recognize Eastlake of 1992. The character of Eastlake Avenue

and the community had been saved and even improved. Most of the cars were gone from Eastlake Avenue. Only truck drivers and service vehicles use Eastlake and only if they have to. North/south city traffic was forced to use I-5 because no one wanted to get stuck behind the light rail cars and wait through four stops on a one lane street. Eastlake was the perfect example of woonerf, the shared use of a street space. Block plantings, trees, seating areas, news stands, people on the street enjoying a pedestrian environment. Old businesses thrived and new small shops and businesses started. All of this was made possible by clean quiet electric trains.

It's true that some of the slick development from the south end of Lake Union crept into the neighborhood when the old Power Plant was finally developed. But most of the shoreline was saved. With fewer cars and the best mix of public transportation in the city, the lakeshore was seen as a place for people and water-oriented activity. My guest reminded me that he had come to Eastlake to see the lake shore development or as he said "the lack of it". He was interested in the houseboats and wild life islands. My guest asked, "Can I rent a boat somewhere?" I assured him that the Boston Street Boat House or the Lake Union Rowing Club both had canoes, rowboats and small sail boats for rent. Then I continued.

With more public use of the shoreline, wildlife enthusiasts were concerned about the loss of habitat for shorebirds and water fowl. Some of them got this crazy idea to build a small floating island. They did one on the sly. It was moved into place and anchored in the middle of the night. Before the authorities could remove it, people in the community decided they liked it. The floating home owners liked the greenery. The islands were small enough and low enough that they didn't block any views and the islands served as break waters from the increasing boat traffic to the south end of the lake. They were just starting the first Bellevue and Kirkland passenger ferry lines then. Finally, permission was given to create a whole group of small offshore islands. The first experiment was known as The Foster Island Flotilla. Today, those floating islands are being copied in urban areas all over the country. They proved to be the perfect solution to separate but equal space for city aquatic wildlife. Besides, no one liked stepping in goose droppings; and now the geese have their own space and don't come ashore much.

At the foot of Lynn Street, we saw canoes paddling on the lake. My visitor pointed with excitement at the floating homes; and in the distance Foster Island Flotilla waited. As he said goodbye, I pointed him toward the Boston Street Boat House and said "see you around". I was sure he would come again to explore Eastlake more. Perhaps he would move here. "Thanks for the tour" were his last words as he hurried toward the boat house. No problem. I enjoyed telling the story. Without a vision of the future ... there is no future.

Ron Adams

EASTLAKE NEWS

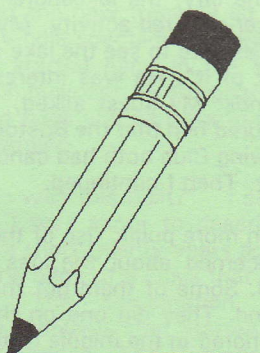
Help Wanted--Volunteer Advertising Coordinator needed for renewing and enrolling new business advertisers in the Eastlake News. Visit the local businesses, point out the important role they play in the community, and possibly assist them to design their ads, too. Contact Chris Leman 322-5463 or Robert afSandeberg 324-5786 for more information.

CLASSIFIED ADS

Waterheater pans, protect against leaks, H.D. vinyl.
½ price, \$5. Dick Arnold, 323-2711.

Wanted Full-featured Super-8 mm Movie Camera.
Minimum 8x zoom desired. Robert 324-5786.

Classified Ads should be between one and four lines with a maximum of 45 characters per line, including spaces and punctuation. To advertise, mail your ad to ECC Advertisement, 117 E Louisa St. #1, Seattle WA 98102. Ads cost \$3 per line. *Ads must be prepaid.* Deadline for the next issue is *May 25.* Ads about *carpooling* are free.



For business ads, write to the above address or leave a message at 329-5030.

NEIGHBORHOOD

Tomatoes

If you are so fortunate to have a south-facing area, protected from the north summer wind, ripe, red tomatoes may be your bounty.

Pots or good soil work equally well. Plant mid-May. Warm night temperatures are needed. An earlier

start is possible with a product "Walls O'Water" (plastic tubes filled with water to encircle the baby plants).

To start, wire tomato cages work well for both the shrub and climbing varieties. You will also probably need stakes and gentle ties as the plants outgrow the cages. Long stakes are essential for the climbing varieties.

So many varieties, all of them excellent. A couple of my favorites - Pic Red and Heartland (both shrub varieties), Early Girl Improved and Beefsteak (climbers) -- *Ed. note: I would add cherry tomatoes to this list.*

Pruning is fun, and almost a necessity. Take out the suckers, which come out just above the main branches. With the climbers, limit growth to one or two of the best vines. Gentle liquid fertilizer helps, such as "Miracle Grow".

Watering depends upon your soil and temperature. With pots, at least two pints daily, even more if it is extremely hot. In soil, a little less a little less often. Regular watering is extremely important.

With six healthy plants, you will probably need to eat four tomatoes a day to keep even with production, starting about August 1. In peak season, production should enable you to bestow your bounty on your tomato friends.

Bob Berst



MEMBERSHIP APPLICATION

Yes!!! I want to take care of Eastlake. My dues are enclosed for membership in the Eastlake Community Council (1 year membership).

This is a NEW RENEWAL Membership. VOLUNTEER INTERESTS _____

NAME _____ PHONE _____

ADDRESS _____

- DUES Household (\$25)
- Sr. Citizen (\$10)
- Business (\$45)
- Donation \$ _____

Make Check or Money Order payable to:
EASTLAKE COMMUNITY COUNCIL
 ECC, 117 E. Louisa St. #1, Seattle WA 98102