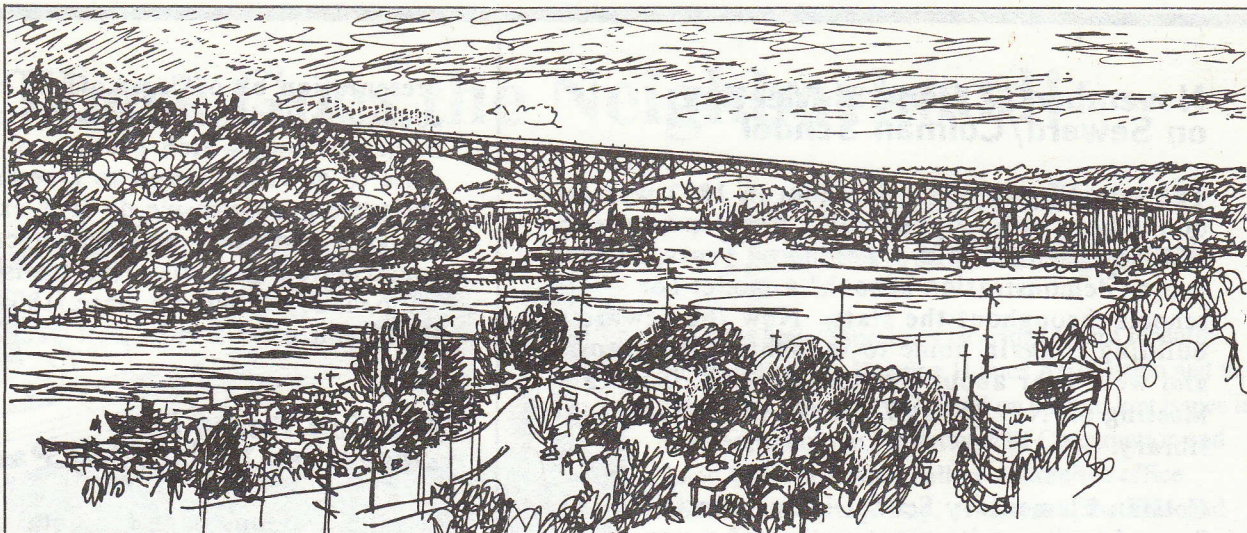


FREE-Take One

Eastlake
Community
Council

117 E. Louisa St.
Box #1
Seattle, WA 98102

Time to renew?
Your membership
expires on the
month and year
printed in your
label's upper right
corner.



EASTLAKE NEWS

HAPPY HOLIDAYS TO EVERYONE!

Auction and Holiday Merriment Party: December 12, 6-9 p.m.

Eastlake's popular party and auction will again be held among the handmade decorations and spectacular lake views of the home of Bernadine Smith, 2717 Boylston Ave. E. The party begins at 6, the auction at 7:30. We'll have more auction items than ever before, some of which are listed on the next page; items may be previewed after 6, or before then by calling 322-5463. Auctioneer will be TV personality and longtime Eastlaker Dick Arnold. Bring some food or drink to be served, or some greenbacks to decorate our "tree for the homeless."

January 22 General Meeting: Focus on Seattle's Neighborhoods

As we were going to press, the ECC's Nov. 27 meeting on innovative programs at Seward/Colman School was about to take place. The next general meeting on Jan. 22 will focus on some citywide and local neighborhood issues. Details of both meetings are on the next page.

Calendar of Upcoming Events

Tuesday, November 27. ECC General Meeting, "School in Eastlake." 7pm, Colman/Seward School Library, 2515 Boylston Ave. E. Door prize: Dinner for two at Thailand on Lake Union.

Wednesday, December 12. ECC Holiday Party and Auction, 6-9pm, 2717 Boylston E.

Monday, December 17 Presentations by Koll Co. and its architects on the Steam Plant and the Charlees site, 7pm at NOAA, 1801 Fairview Ave. E. (See mockup of proposed wall on display along Eastlake side of Steam Plant that day.)

Tuesday, January 22. ECC General Meeting, "Seattle: A City of Neighborhoods," 7pm at NOAA, 1801 Fairview E. Door prize: Dinner for two at Morningtown Rest.

NOVEMBER/DECEMBER 1990

Eastlake News is
distributed free
to residents of the
Eastlake Community
and Members of
the Council

November 27 General Meeting on Seward/Colman School

The founding of Seward School in 1893 was one of the keys to Eastlake's early development as a residential community. For many years, Seward was a "demonstration school," a model for schools throughout the state. Now the Seward building is again home to innovative programs; and we'll hear about them at the ECC General Meeting on Nov. 27 at 7 p.m. in the school library.

Colman Elementary School is our guest in Seward as it awaits construction of a new Colman building back in the Judkins neighborhood; principal Ed Jefferson will be on hand to tell us about his innovative programs. We will also hear about the city-funded after-school program that ECC and many Eastlake organizations and volunteers are doing jointly with Colman and its PTA. Then we will have a presentation by the parents of TOPS, a well-regarded program which will be relocating to Seward next September. If you care about schools, don't miss this important meeting; if you can't come but would like to volunteer to work on school-related programs, call 322-5463.

January 22 General Meeting on Seattle's Neighborhoods

Seattle has some of the country's most well-defined neighborhoods, and also some of its most active neighborhood organizations. The meeting will begin by showing a neighborhood in action. Again this year Mayor Rice--once an Eastlaker who lived on Boylston St.--is seeking the Eastlake Community Council's input on City budget decisions affecting this neighborhood. A workshop at our January meeting will consider endorsing such recent priorities as a residential parking zone program, park acquisition funds, a community center, and traffic circles. Other ideas include street trees and the maintaining of our cobblestoned streets. Please write to the ECC at the above address to let us know your budget priorities, and to tell us about any items you want added to the list that will be discussed at the meeting.

After the budget workshop, we will hear from UW medical professor Glover Barnes, president of the Seattle Community Council Federation, the citywide alliance which Eastlake has long been a part of. Barnes is a longtime neighborhood leader who helped get Norm Rice into politics. The meeting will also include a

presentation by officers of the community council in Judkins, Eastlake's sister neighborhood, which because of its location close to downtown and to freeways has many of the same problems we do (for example, Colman School's relocation here was necessitated by the construction of I-90). Don't miss this meeting, 7-9 p.m. at the NOAA base, 1801 Fairview Ave. E. If you need a ride, call 322-5463.

Auction Items for December 12 Holiday Party

See the previous page for details of time and place for this year's ECC holiday party and auction; here are some of the auction items that had already been confirmed at presstime. Gift certificates for Chandler's Cove, Safeway, Fred Meyer, Egghead Software, Patrick's Fly Shop, Sound Mind and Body, Eldercare Resources, Kelley's Chevron, and Ralli Round; dinner for two at the Azteca, Julia's, Kamon, Tio's, Tommy's Sushi, the Hi-Spot Cafe, and virtually every other restaurant in or near Eastlake--including the Space Needle. Tickets to the Sonics and the Northwest Folklife Festival. A donation from the Folk Art Gallery. Hypotherapy and a massage. A boat haulout. A houseboat book and a vase from Bibelots & Books; can crushers donated by Lake Union Mail; a case of champagne from Pete's, baking and a whole dinner by Linda Meller and Cheryl Ellsworth, a macrobiotic dinner catered by Mish's, mending by Anna Simonsen. And there will be many more to come. Call 322-5463 to offer an item, get a full listing, or make a bid.

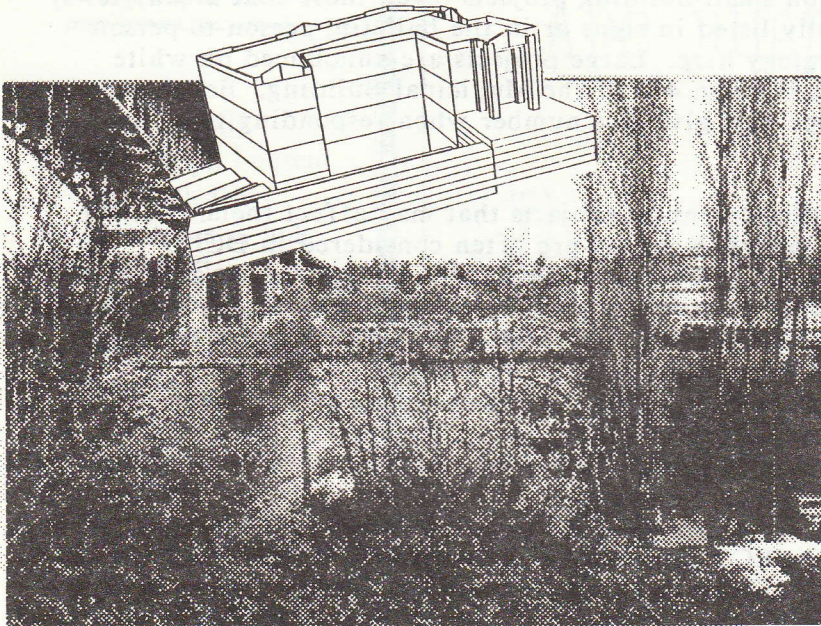
Community Council Elections Held

At the October 23 general meeting of the Eastlake Community Council, the membership elected the following officers and board members: Chris Leman (president), Estelle Mitchell (treasurer), Carolyn Bonamy, Joy Huber, David Huber, Anna Kenny, Janet Lapeyrouse, Lynn Poser, and Steve Vrabel.

These people work for you, and they welcome your ideas on Community Council activities. Thanks to our outgoing board members, especially Mark Blatter, who was virtually the acting president during a critical period, and who worked hard as land-use chair. Thanks also to Martin Cobb for years of good newsletters. A newsletter editor is still needed; to volunteer for this or for other ECC activities, call 322-5463.

There Goes the Neighborhood!

Shorelines Board Denies Office Appeal



The State Shorelines Hearings Board recently ruled against the Floating Homes Association and the Eastlake Community Council on several key issues in their appeal of the Department of Construction and Land Use's decision to allow a shoreline office building on Portage Bay. As a result, the FHA and ECC have decided to take their case to Superior Court.

Dally Development Corporation proposes to build the four story building on the south shoreline of Portage Bay between the freeway bridge and the University Bridge.

Popularly known as the "Pocock Building" because of the claim by the developer that the Pocock Rowing Foundation would occupy the water level

floor, the office structure would join a rash of similar non-water dependant office and residential buildings which have been built on the lake since the most recent Shorelines Master Program was passed in 1985. Loopholes built into the SMP allow such uses if some water dependant connection can be established. In this case it was to be the Pocock Foundation. However, in spite of loud publicity to the contrary, by the time of the hearing no written agreement with Pocock could be produced by Dally.

The main points of the community's appeal to the Board were that such loopholes are contrary to state law, that this development did not even meet the standards of the loopholes, and that the parking requirements were to be satisfied by a lot hundreds of feet away on a lease from the state revocable in thirty days. Unfortunately, these also happened to be the very issues the Board ruled against.

The Board did agree to hear arguments on a number of technical issues raised by the community groups such as lot coverage, views and public access. However, the FHA and the ECC decided that conceding the remaining technical points before the Shorelines Board and arguing the broader policy issues in Superior Court would be a better use of their time and resources. As a result, the organizations will be filing an appeal soon.

Finding Funding

You can help.

At issue is whether we will allow developers to use the shorelines of Lake Union and Portage Bay for office buildings by taking advantage of a loophole which was originally intended to enhance the financial viability of new water dependant projects.

It has not worked out that way. Developers have realized that all they have to do is say they are thinking about renting some space to a marine dependant business and DCLU will let them build an office building on the shoreline. The "Pocock" building is only one of many examples.

This perverse result is exactly opposite from the intent of the law.

What do you want the lake to be? A few years ago, through inaction, we let the shoreline restaurant loophole go unchallenged and look what happened to Fairview. With this case, we now we have a chance to close the office loophole before the same thing happens again.

The problem is that fighting in court is expensive. The FHA and the ECC have already paid thousands of dollars in attorney's fees and have bills outstanding equal to what we've paid. We are now launching yet another round of briefs and court appearances.

Your dollars will make the difference. Make your (tax deductible) check out to SCCF/Eastlake Legal Fund and send it to the Lakeshore Defense Fund, 117 East Louisa #1, Seattle, 98102. — Bill Keasler

LAND USE UPDATE

Eastlake is undergoing more building than any other neighborhood of similar size. All permit applications and actions are listed in a twice-weekly bulletin, the Land Use Information Service, which you can subscribe to free by writing the Department of Construction and Land Use (DCLU), Municipal Building, 600 Fourth Ave., Seattle 98104. Files on small building projects (even those that block views) are not available to the public and are not usually listed in signs or in the bulletin; person-to-person contact with the permit applicant is the best strategy here. Large projects are announced on white boards, and the files are available to all citizens in room 400 of the Municipal Building. Be sure to write down the Master Use Permit (MUP) number, and give this number when responding to a particular project.

It is important for every citizen to look into and comment on projects that may affect them. Letters received by the City after the official comment period is passed are often considered in DCLU decisions, so it is never too late to write. Although the Eastlake Community Council reviews proposals that are of neighborhood significance, many others deserve the scrutiny of those who live near them. ECC project reviews benefit from your ideas and suggestions, and from copies of your own letters to the City (send these to the ECC at 117 E. Louisa #1, Seattle 98102). We are always in need of volunteers to help in project reviews; to volunteer, call 322-5463. It is interesting and challenging, and you can help keep Eastlake a nice place to live and work. We now have a documented history of Eastlake projects, good and bad; call if you would like to borrow a copy. And here are some updates on recent development proposals.

Portage Bay Apartments (3230 Eastlake). Despite ECC appeals of this oversized and traffic-tangling project before the City Hearing Examiner and the City Council, the permit has been granted. If this project is within City ordinances, then the ordinances are terribly at fault; and we are working to change them.

Coolidge Propeller Site (1608 Fairview). Months ago, ECC commented on the new owner's proposal for a "research and development lab" at the site, but the City has not yet issued a building permit. Then we discovered this communication to DCLU from the state Department of Ecology: "The site has been formally listed on the Hazardous Waste Investigations and Cleanup Program site list. Neither this fact, nor documentation of an environmental assessment, is included in this checklist. Omission of this information is misleading to the public." The dusty demolition of the building and the waste cleanup of recent months thus went on without public notice of the possible risks to passers-by--or to the children who played on the site after hours.

Lake Union Steam Plant. An advisory board in which ECC participated had recommended, and the City Council and the Mayor had concurred, that this historic building have a mix of uses and of housing income levels, and provide some public access. But long ago, the Koll Company, the California-based developer, had made a deal with ex-Mayor Royer to trade the city-owned Steam Plant for part of the proposed South Lake Union Park, and Koll has steadily talked to death any efforts to turn this proud landmark into anything other than a glorified luxury condominium, contrary to the preferences of an advisory group including the ECC. Koll resists social services or a glass museum in the building, and now is even planning to deny any public access except for the residents; is insisting on a six-foot wall that will block pedestrians' views of the building along Eastlake; and is trying to have the smokestacks removed permanently, which would contravene the building's historic status. The decision process has been a mockery, with employees of the Department of Community Development hiding important documents from citizens, and even, it appears, from the Mayor and City Council. City government has failed to obtain an independent financial analysis of the project, and is allowing Koll to call the shots. All this in what is--or was--a public building, the most visible single structure in Eastlake, and an emblem for all Lake Union.

Charlees Site. Now owned, like so much else on Eastlake's southern border, by the Koll Company, this site is being proposed for the new location of the Washington State Employees Credit Union. See "Calendar of Upcoming Events" regarding the Dec. 17 meeting.

Bogey's Parking Lot (1550 Eastlake E.). The proposed 7-story apartment complex here received critical letters from ECC and many others. In response, the City is requiring an Environmental Impact Statement, which is now in progress.

(Land Use Update continued on page 6)

THE
Eyeworks

*The best of the best
from around the world!*

Gucci, Italy
Polo, by Ralph Lauren
Stendhal, Paris
Giorgio Armani, Italy
Anne Klein
Cartier, Paris
I.a. Eyeworks
Paloma Picasso
Persol, Italy
Gianni Versace, Italy

THE EYEWORKS
709 Broadway East
Seattle, WA 98102
328-4386

Designer eyewear for all occasions.

copy mart

Now with Fax!

EASTLAKE
2920 Eastlake E

M-F: 8:30-5
CLOSED SAT 329-7900

All the Animals, in the Zoo.
Are jumping up and down
for you.

They want you all, to be sure
if you can.

To visit the Zoo as soon
as you can.
Eastlake Zoo Tavern.

2301 Eastlake E. 329.3277.

Pool. Darts. Shuffleboard.

Great view of Lake Union.

Live Music Sundays 8.to.12.

Support your local Zoo.

State Contr. Lic. #DANDYCC123DC



Dandy Custom Craftsmen Inc.
258 East Edgar Street Seattle, Washington
323-6973

Renovation & Remodeling Experts
Call us! We're in the Neighborhood



BIBELOTS & BOOKS

Rare and Used
Illustrated Books
Children's Books
Mysteries & Classics

American Pottery:
Fiesta, Harlequin
Roseville, Weller
Rookwood Etc.

112 East Lynn St., Seattle, WA 98102
12-5:30 Tues.-Sat. & By Appointment
329-6676

Help Eastlake and Your Community Council

Opportunities in Eastlake. Give occasional rides to an elderly or infirm neighbor. Help the police with crime prevention. Donate a filing cabinet, a FAX machine, or stationery to the ECC. Write ECC a check (your employer may even match it). Remember ECC in your will. Become a land-use specialist. Help with the spring home tour or lend us your garage for our rummage sale. Conduct oral history interviews with Eastlake's pioneers. About these and other chances to help, call 322-5463.

ECC Group Memberships. Condominium associations and floating home-docks are invited to purchase group memberships in the Eastlake Community Council. Group memberships were pioneered by the Log Foundation, the homeowner association for three floating-home docks. A total payment is made equivalent to an individual membership for each home on the docks; each homeowner then receives a voting membership in the ECC. Group membership in the ECC is a way for the residents of a particular building or dock to protect the quality of life in their neighborhood, just as their association tries to do for their own building or dock. For a presentation by an ECC representative, call 322-5463.

Neighborhood Planning. The ECC is seeking applicants for our neighborhood planner position; women and minorities are especially encouraged to apply. Volunteer opportunities are also available to survey buildings and people and assess our local needs. To apply or volunteer, call 324-1158.

Artists. The masthead of the *Eastlake News* was drawn by the late Victor Steinbrueck, the architect who led the fight to save the Pike Place Market, and a longtime Eastlake defender and board member. Recently, local artist Karen Berry has helped by designing the posters for our Seward School reunion, Leftover Candy Dance, and upcoming auction. The ECC would like to find other people with drawing and design skills, both because we need their help, and because we want to mount another Eastlake art show, and are looking for someone to help organize it. Call 322-5463 for further information.

Eastlake Businesses. Our advertisers, the donors to our auction, and our business members are all contributing toward the success of the Community Council in keeping Eastlake a good place to live and work. Please patronize them--they're in business to serve you, and they're right here in Eastlake.

Land Use Update (continued)

2901 Eastlake (P-Patch site). Having ordered that an Environmental Impact Statement be done, the City held a widely attended scoping hearing in July and the study is now in preparation. Information on any salmon during the upcoming spawning season and other wildlife seen near the site should be reported immediately to the Olmsted-Fairview Park Commission at 328-4798; you can also volunteer to help save this very special part of the neighborhood. Divers are especially needed.

Mallard Cove. Because of changes in this project as originally proposed, and questions that have been raised about public access to the shoreline, blockage of views, and parking problems, the City has reopened the comment period until Dec. 6. The white board appears not to have been updated correctly, and the paper announcements of the new comment period seem to have disappeared shortly after they were posted. Also see interesting letters about this project in recent issues of *The Lake Union Review*.

"Three Pigs" Site (2017 Eastlake E.). The comment period is open until Nov. 22 regarding a proposed three-story apartment building.

Farmhouse (102 E. Louisa). A local realty company (and a realtor who lives in the neighborhood!) sold this historic 1903 building--childhood home of the oldest living resident of Eastlake--into possible oblivion; the purchaser wants to knock it down and put up luxury townhouses. Let's do what the realtor didn't--find a purchaser who wants to preserve and add on to the house rather than destroy it.

Mini-warehouse under freeway (1700 Franklin E.). Although the ECC's 1985 appeal to the City was unsuccessful concerning this huge (380 feet long, 194,000 square feet!) proposal for state land, the Washington State Department of Transportation has disallowed it because of the site's historic instability. A WSDOT official tells ECC that recent earthmoving in the area was simply to build a maintenance road.

"Pocock building" (near the University bridge). See the article on page 3.

Got some information on a proposed or actual building project (or something else we should write about)? Write to the *Eastlake News* at 117 E. Louisa #1, Seattle 98102.

ROANOKE
Exit

Breakfast • Lunch
Dinner • Sunday Brunch

2366 Eastlake East Seattle 328-2775

LAKE UNION MAIL
117 East Louisa Street
— the corner of Eastlake & Louisa —

- Mailbox Rentals
- Parcel Shipping
- UPS • USPS
- FAX Services
- Packing Supplies
- Recycled Paper
- Key duplication
- Cards, Envelopes

HRS: M-F 9-6, S 10-3
329-1468

Steve Frodsham

BEAUTY WORKS
Styling for Men & Women

1/2 OFF INTRODUCTORY STYLE/CUT

2701 Eastlake E. Seattle 98102 329-9007
Tues.-Sat. 10am-6pm

Julia's
14 CARROT CAFE

Smokin' Eats!

Dinners 5-9 PM Tues., Wed., Thurs.,
5-10 PM Friday and Saturday

2305 Eastlake E. 324-1442

The Corner For Fine Printing

G&H PRINTING

2370 EASTLAKE AVE. E. SEATTLE, WA 98102

E. LOUISA ST.

329-9888

Membership Application

YES!!! I want to help take care of Eastlake. My dues are enclosed for membership in the Eastlake Community Council (1 year membership). This is a NEW RENEWAL Membership.

NAME _____ PHONE _____

ADDRESS _____

- DUES: Household (\$15)
 Sr. Citizen (\$10)
 Business (\$40)
 Donation

Mail to: **ECC Membership**
117 E. Louisa St., Box #1
Seattle, Washington 98102

Make check or money order payable to:
Eastlake Community Council

Protest Against Overflights Goes to Federal Court

Representatives of the Eastlake Community Council and a broad coalition of neighborhood groups and municipalities--with the help of ECC lawyers Peter Eglick and Henryk Hiller--recently filed suit in federal court to overturn the Federal Aviation Administration's decision not to do an Environmental Impact Statement regarding the vastly broadened overflights that began in April. The coalition includes the city governments of Tacoma, Federal Way, and Gig Harbor (ironic that we are getting more help from these other cities than from our own City government). Seattle's Mayor, City Council, and City Attorney went back on a resolution passed last winter to file such a suit, and now are not even helping us with a friend-of-the court suit. To make a tax-deductible contribution to this nationally significant legal battle, write your check to Aircraft Noise Legal Fund, and send it to the ECC at 117 E. Louisa #1, Seattle 98102.

Air Quality Receives Focus

Carbon monoxide and other pollutants have long been produced by the heavy traffic along I-5 and Eastlake Ave. But toxic and cancer-causing diesel fumes are increasing in Eastlake as more Metro buses from all over the County drive through or park and idle their engines. Many could switch to electric power, but Eastlake's electric lines were removed some years ago. Smoke is increasing as more housing units are packed in per acre; many of them have fireplace inserts or woodburning stoves which, even if certified, pollute more than the average furnace. Wood smoke has many of the same toxics and carcinogens as does cigarette smoke. The Washington Clean Air Coalition is now gearing up to strengthen our state's weak Clean Air Act; to help fight for cleaner air, call 325-5463 or 322-5463.

Lake Union Water Quality

Although Lake Union is cleaner than it was twenty years ago, pollution is still a problem. Some boats continue to illegally empty their bilges, or spill fuel or motor oil. Toxic industrial wastes at sites around the lake contaminate groundwater as it flows into the lake. Runoff from Interstate 5 and nearby

roads takes motor oil and other pollutants straight into the lake (e.g. at Garfield St.). During rainy weather, overflow from sewers strained by stormwater takes raw sewage directly into the lake (e.g. at Roanoke St.); efforts to solve that problem by separating sewers from stormwater drainage have the unfortunate effect of piping contaminated roadway runoff directly into the lake. Millions of salmon that are hatched or spawn upstream must swim through Lake Union on their way to and from the ocean.

The Olmsted-Fairview Park Commission has applied for a Metro grant to prepare brochures, posters, and signs to help us better understand what we can do to clean up Lake Union. ECC's February meeting will likely focus on this topic; if you would like to get involved, call 329-2212 or 328-0733.

Neighborhood Notes

Seattle Police Relief and Guild. President Ed Streidinger addressed the October ECC general meeting which was held at the Guild's headquarters here. SPRAG recently moved to Eastlake when it purchased and remodeled the old Baillie School of Broadcasting. Welcome.

Flamenco. In a recent *Pacific* magazine, our neighbor Harriet Bullitt was pictured dancing at Tio's, which now has a Flamenco night at 7 p.m. on the last Saturday of each month. The Seward/Colman after-school program may soon feature an introduction to this special Hispanic art.

Kayak Park? Designers Glenn Chapman and Tom Zachary presented to the October 23 ECC meeting the plans they prepared for nearby landowner Homer Bergren for a park on the Martin street-end. They are open to community suggestions on a name for the park; one suggestion was Kayak Park. Write to us what you think of that name, or send us your own suggestions.

Bookmobile? Eastlake lacks a public library, and once had regular visits from the public bookmobile. These were terminated in a budget cutback and were never resumed, although the bookmobile now visits other parts of the city. Would you use the bookmobile if it came back? If so, write to Elizabeth Stroup Seattle Public Library Director, 1000 4th Ave., Seattle 98104. (And please send a copy to the ECC.)