

Take the Tour of Eastlake

Eastlake Home, Business & Boat Tour
Sunday, April 28, 12-5 pm

(1990)

Presented by the Eastlake Community Council (ECC)
117 E. Louisa #1, Seattle, WA 98102

Eastlake got its name because it is just east of Lake Union. First a forest, then farmland, Eastlake since the turn of the century has been a vital but precarious balance of homes, businesses, boats, and public facilities. Within its boundaries are some of Seattle's oldest buildings and perhaps its widest range of land uses and building types. Cottages and condos. Factories and architectural studios. Shipyards and floating homes. And boats, boats, boats. It's all here, a panorama of history, with some of the region's quaintest and most modern architecture side by side. Three thousand people live here. Many thousands more come to work or play. And on April 28, for the first time ever, and on a scale unlikely ever to be repeated, you can come into our homes and workplaces to share the Eastlake way of life.



Two Townhouses. These homes demonstrate that with imagination, a condominium can definitely be individualized.

The Berry townhouse at Roanoke Reef (1985) has three floors, a roof deck, and back patio garden. Very few monochromatic walls remain that aren't covered with contemporary Northwest art, or murals, faux, or colorful decorative painting by the artist owner. This painterly spirit extends to some of the furniture and floors as well.

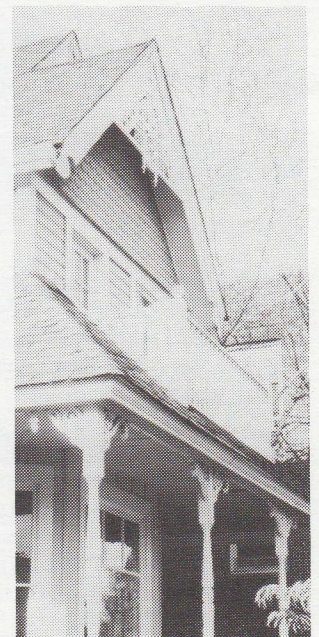
The Seller home is a custom-designed penthouse at Siena del Lago (1989). The kitchen, living room, and formal dining areas are connected in an informal cabin space, separated by traditional American columns; the master suite places the bed on a platform, the better to enjoy the lake view. The home's furnishings show the influence of the owner's Asian travels, including wall coverings of handwoven Thai silk, customized designed Chinese carpets, and Balinese carvings throughout.

Two Victorians. Among the oldest and best-restored homes in the city, these designated City landmarks were originally built in the 1890s as farmhouses for a time when Eastlake was covered with pastures and orchards.

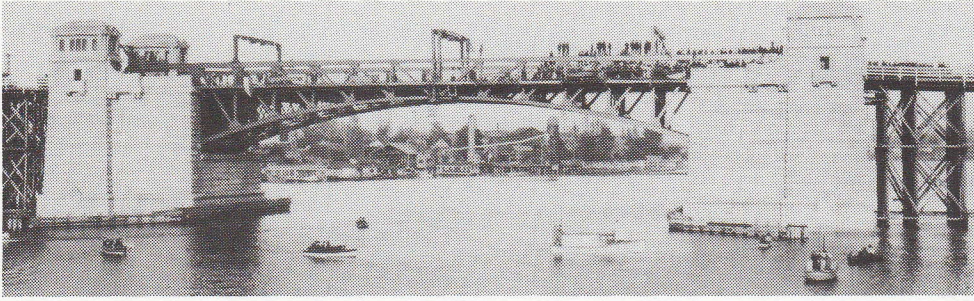
The Nelson-Steinbrueck house is painted a bright yellow, and has a dramatic wrap-around porch reminiscent of a ship's prow, and a mast-like tower. The late Victor Steinbrueck was responsible for saving the Pike Place Market and designing several of Seattle's favorite parks and landmarks. The home has art by Steinbrueck, many period furnishings, and the traditional painted floors.

The Fisher-Howell house was saved by its owners from demolition. It is notable for its cobweb detail at the roof peaks, fishscale shingle siding, ceramic doorknobs, and bronze hinges and doorplates. A hidden second fireplace was discovered last year and is now being restored. Also notable for its landscaping, the house has been featured in Metropolitan Home.

George Suyama Architectural Studio. This 1983 office building could have encompassed three times the square footage in one building covering the entire lot. Instead, Suyama chose to lightly remodel the attractive old brick restaurant building on the site, and design a new brick building to blend in with it and with nearby homes and apartment buildings. Between the old and the new building is a sunny courtyard, shaded by a large oak tree that was accommodated by the design; it is a favorite neighborhood gathering place. Winner of the Seattle-King County Board of Realtors Environmental Award.



Related Event. April 16, 7 p.m., at the Seward School Library, 2515 Boylston Ave. E. "A Chronicle of Eastlake Style" -- Architect Susan Boyle and interior designer Anne Fisher present their widely acclaimed slide show and commentary on Eastlake history, featuring many of the stops on our April 28 tour. Tour tickets will be on sale.



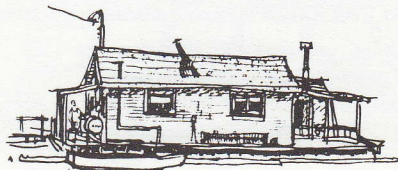
University Bridge. Completed in 1919 by the Seattle Engineering Department just after the Fremont and Ballard bridges, this is one of the busiest drawbridges in the country. The bridge's internal workings were recently modernized. As only a very limited number of people can be accommodated for touring the control tower and beneath the bridge, it will be necessary to reserve a place before the day of the tour by calling 328-0733. On the day of the tour, inquiries may be directed to the hospitality house (322-2499) about any remaining slots in the bridge tour. No children under 6 can be permitted on this bridge tour.

Ross Laboratories. This high technology firm specializes in the design and manufacture of sonar systems for commercial fishery applications, and hydrographic surveys for the mapping of rivers, harbors, oceans, and other bodies of water. On display will be maps in unprecedented detail of the bottom contours of Lake Union, Lake Washington, and Puget Sound.

Golden Dolphin. Ross Laboratories' 75 foot research vessel is equipped with highly sophisticated sonar devices for testing and demonstrating the company's products.



Lake Union Drydock Co. This 12 acre complex is one of the largest industrial sites near downtown, and is probably the oldest continuously operating marine business in the city. The yard was once a leading shipbuilder, producing Coast Guard cutters, tuna clippers, many pleasure yachts, and even some war canoes and whale boats. It also manufactured the first waterskis in the United States. The company now is a leader in ship repair, with a specialty in wooden boats, and has worked on such unusual craft as Navy minesweepers and the tall ship Wawona. No other company has as many floating drydocks (seven) that are certified by the U.S. Navy.



Two floating homes. Remodeled several times in the past half century, both of these houseboats have beautiful interiors and extraordinary views.

The Gey-McCulloch home has been featured in the New York Times and other publications. It is brightly colored inside and out, with wall paintings and specially designed furniture by resident artist/interior designer Mary Gey-McCulloch. The child's suite upstairs is especially colorful and spacious.

The MacMillan houseboat, which has been featured in the Seattle Times, is clothed inside and out with cedar siding, and topped with a copper roof. Two decks and a high ceiling give a feeling of great spaciousness. Every surface has modern and traditional art from the Northwest, Africa, Mexico, and the South Pacific. The home also has many large and unusual evergreens and cacti.

Classic Apartment. The Linda Vista is one of many elegant old apartment houses built during Eastlake's streetcar era. Like many buildings of the same period, it has a strong Spanish influence.

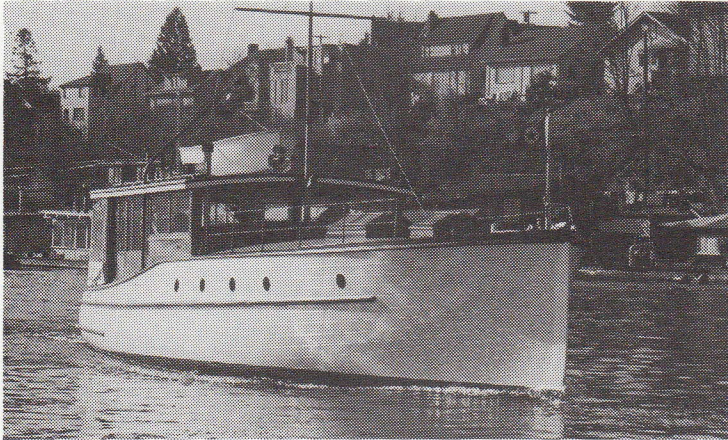
Marriott

Residence Inn

RESIDENCE INN BY MARRIOTT
SEATTLE - DOWNTOWN - LAKE UNION
800 FAIRVIEW NORTH
(206)624-6000

When clients come
to town.
Recommend they stay
in the neighborhood.

Traffic Systems Management Center. Operated by the state Department of Transportation, this facility is the nerve center for video monitoring of traffic conditions on state routes between Everett and Tacoma. Closed circuit monitors can aim and focus dozens of video cameras. Feeds are provided to media traffic reporters. Information on traffic conditions is used by the State Patrol and for regulating stop lights at on-ramps throughout the region.



Marian II. This stylish 42 foot raised-deck cruiser is one of the few remaining fully authentic Lake Union dreamboats, a craft that endeared our lake to boat-lovers everywhere. For this tour, the Marian II now returns to Lake Union Drydock for the first time since it was launched there in 1928. An award-winning model of the Marian II will be on display in a window at the Nordstrom downtown store in the weeks prior to the tour.

Zodiac. Moored on the Lake Union Drydock Company's south dock is this 100-foot schooner. With its graceful hull, masts and rigging, the Zodiac summons up memories of a time before construction of the Aurora Bridge made it impossible for even larger sailing ships to ply Lake Union's shores.

About the Eastlake Community Council

Proceeds from this tour benefit the programs of the Eastlake Community Council (ECC). A non-profit organization whose volunteer board and officers are elected by neighborhood residents, the Council was founded in 1971 to encourage a sense of community, and work to preserve Eastlake as a good place to live and work. Toward this end, ECC promotes schools, parks, and social services. It works to preserve historic structures and to assure that new buildings fit in with the neighborhood. Subscriptions to the Eastlake News are available by sending a \$25 check made out to the Eastlake Community Council to: 117 E. Louisa #1, Seattle, WA 98102. Donations to assist us in preserving the Eastlake way of life are also welcome and needed; in buying your ticket, please consider adding a donation. For questions about ECC or this tour, call 322-5463.

Limited Delivery Area

PAZZO'S

Hours 5 - 11 Every Day

DELIVERY ■ 329-6558

Detach Here

IN PIZZA WE TRU&T

Introducing **PAZZO'S**

11:30 am - 2 am

\$2

BUCK

329-6558

GOOD OFF ANY REGULAR MENU ENTREE
LUNCH or DINNER
one per person per visit

2307 Eastlake Ave E

Off-shore event. During the Eastlake tour, the annual spring cruise of the Center for Wooden Boats will be parading more than 40 classic wooden craft of very description just off our shores. The Center for Wooden Boats (1010 Valley St.) will remain open until 6 pm.

1823 EASTLAKE AVE. EAST, SEATTLE, WA 98102
325-7350

Santa Fe Style Mexican Food

AZTECA
MEXICAN RESTAURANT

Muchas Gracias!

2501 Fairview Ave E. Seattle
(on Lake Union) 324-4941

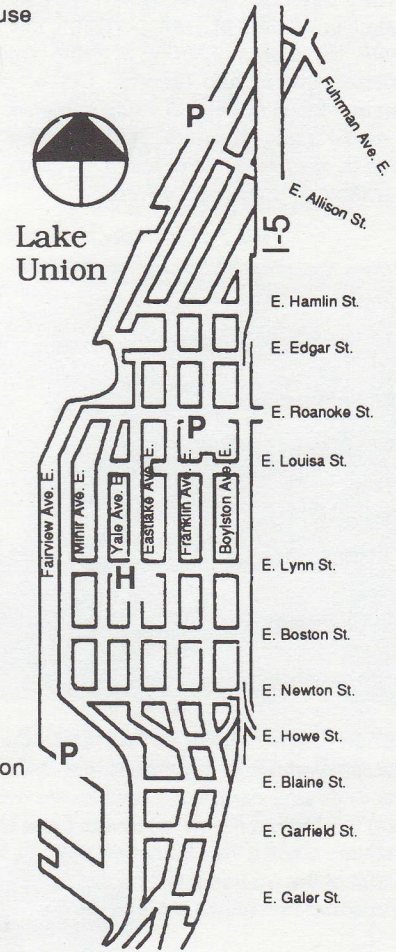
Open 7 days a week
Sun-Thr 11am - 11:30pm
Fri-Sat 11am - 12:30pm

Sundays are "Little Amigo Day"
(under 13 -- only 95¢)

Tickets: \$15, or \$10 for seniors. Those who show a Metro bus pass at the Hospitality House will receive a rebate of one dollar on the day of the tour.

Prior to Day of Tour. Advanced purchase of tickets is strongly recommended at the following outlets:

- Ballard** - Julia's Park Place, 5410 Ballard Ave.
- Bellevue** - City News (Bellevue Village at QFC)
- Capitol Hill** - Community Service Center, 506 19th E.
- Denny Regrade** - Campaign Connection, 2226 Third Ave.
- Eastlake:** - Terry Kelly's Chevron, 2727 Eastlake Ave. E.
Lake Union Mail, 117 E. Louisa
Julia's 14 Carrot, 2305 Eastlake Ave. E.
- Federal Way** - The Place for Gifts and Things, 32901 First Ave. S.
- Fremont** - Community Service Center, 708 N. 34th
- Issaquah** - 12th Avenue Cafe, 1235 12th Ave. NW
- Lake City** - Little City Hall, 12707 30th Ave. NE
- Lake Forest Park** - Sandi's Hallmark (Lake Forest Park Towne Center)
- Madison area** - Lilith, 2719 E. Madison
- Pike Place Market** - Cibol, 1501 Pike Place #521 (mezzanine level)
- Pioneer Square** - Elliott Bay Book Company, First S. and S. Main
- University District** - Cellophane Square, 1315 NE 42nd
Tarantula Jack's Championship Chili Parlor, 4543 University Way NE
- University Village** - University Village Natural Foods (by Security Pacific Bank)



Information on the Tour

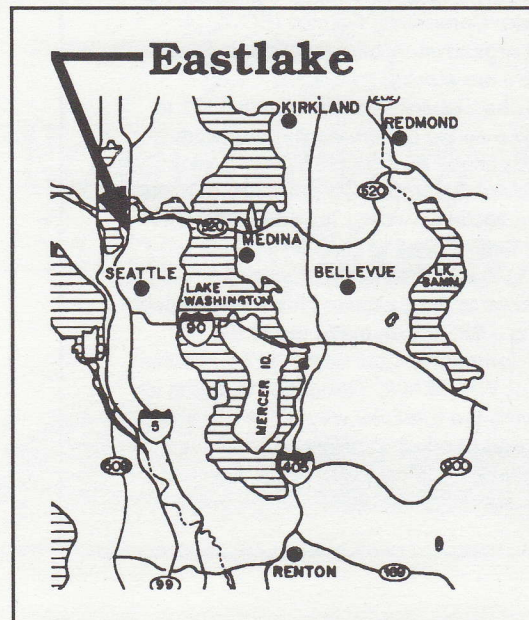
Hospitality House (2300 Yale Ave. E.). The hospitality house will be open on the day of the tour (Sunday, April 28, 12-5 p.m.). Available there will be refreshments made for you in the kitchens of Eastlake. Rest rooms, extra tickets, and a message board (322-2499) will also be provided.

Day of Tour. Tickets may be purchased on the day of the tour at the hospitality (H) house (2300 Yale Ave. E.) and at the parking (P) lots listed below:

- NOAA (1801 Fairview Ave. E.)
- Seward School (enter off E. Roanoke St.)
- Ross Laboratories (3138 Fairview Ave. E.)



How to get there. Eastlake is accessible via Metro bus routes 25, 70, 71, 72, 73, and 74, and is located on the Lake Union bicycle route. If you are driving from State Route 520 or Interstate 5, take the Roanoke St. exits and head west (downhill) toward Lake Union.



Eastlake Home, Business, and Boat Tour

Sunday, April 28, 1991 12-5pm

The tour sites are marked on this map. You may start the tour at any point, and visit as many of the sites as you wish, and in any order. Each site opens for touring at noon, and closes promptly at 5 p.m. The hospitality house at 2300 Yale Ave. E. will have refreshments, a rest room, extra tickets, Eastlake posters & T-shirts, and a message board (322-2499).

Background on the tour sites is available in the tour brochure (entitled "Take the Tour of Eastlake"), and hence is not repeated here. Copies of the brochure are available at various stops on the tour and at the hospitality house. In addition, background sheets on each site will be available on request.

University Bridge (1919). Operated by the Seattle Engineering Department. Reservations are necessary for this stop on the tour. Inquiries may be directed to the hospitality house (322-2499) or at the SE corner by Red Robin about any remaining slots in the bridge tour.

3138 Fairview Ave. E. Ross Laboratories and the firm's research vessel, the Golden Dolphin.

2900 Fairview Ave. E. P-Patch and proposed Fairview Park

2819 Franklin Ave. E. The Fisher-Howell home (1895).

2622 Franklin Ave. E. The Nelson-Steinbrueck home (1893).

811 E. Roanoke (just east of Interstate 5). Traffic Systems Management Center (operated by the state Department of Transportation).

65 E. Roanoke. The Berry townhouse (1985).

102 E. Louisa. The Arborway and Farmhouse (details on other side)

2300 Yale Ave. E. Hospitality house. Refreshments, rest room, and message board (322-2499).

121 E. Boston. George Suyama architectural studio (1983).

2037 Minor Ave. E. The Seller penthouse (1989).

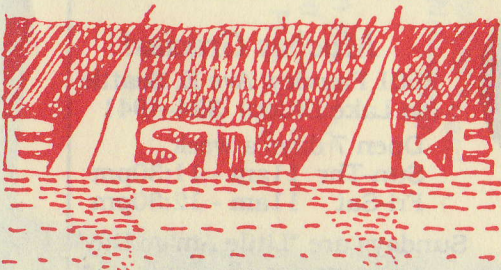
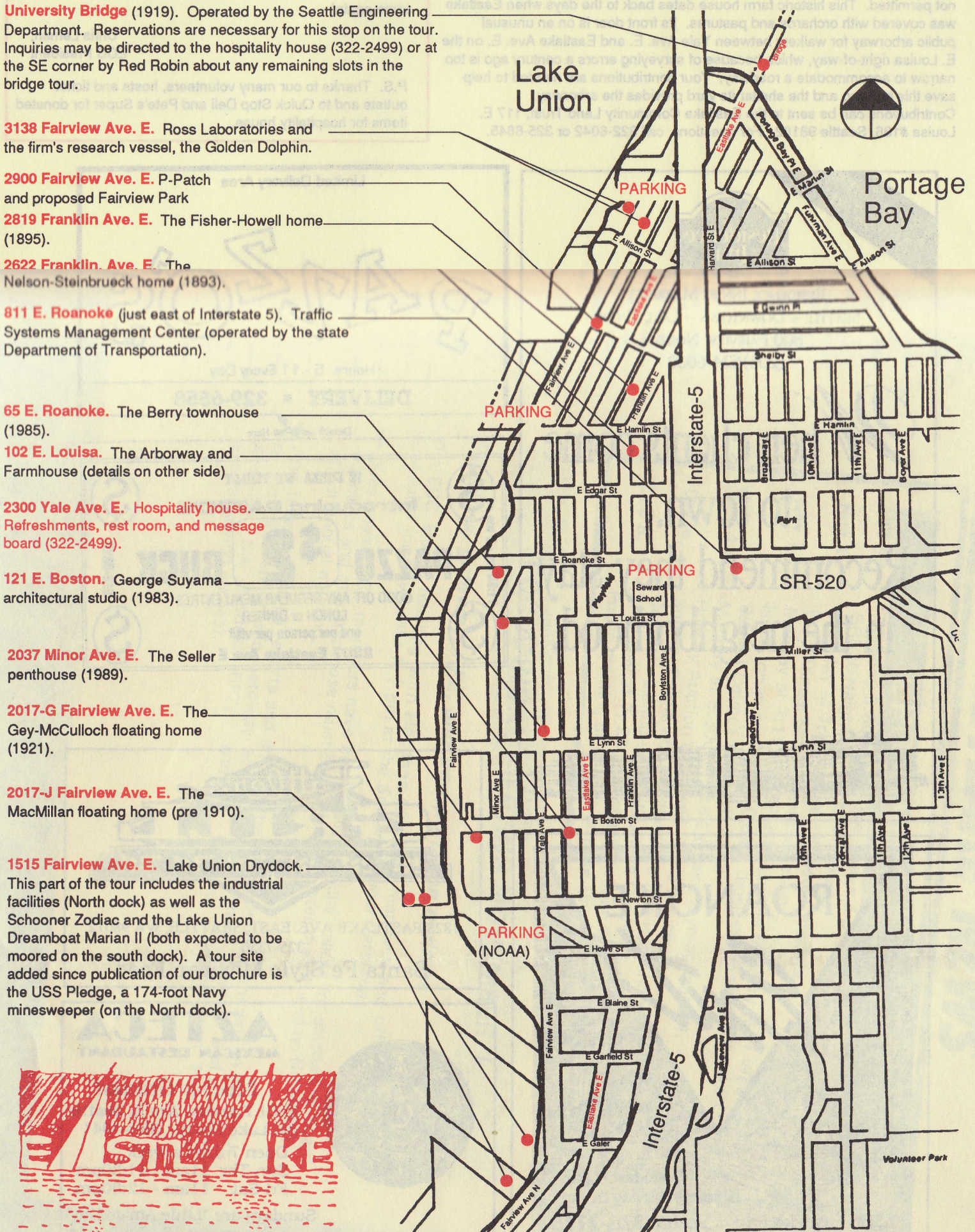
2017-G Fairview Ave. E. The Gey-McCulloch floating home (1921).

2017-J Fairview Ave. E. The MacMillan floating home (pre 1910).

1515 Fairview Ave. E. Lake Union Drydock. This part of the tour includes the industrial facilities (North dock) as well as the Schooner Zodiac and the Lake Union Dreamboat Marian II (both expected to be moored on the south dock). A tour site added since publication of our brochure is the USS Pledge, a 174-foot Navy minesweeper (on the North dock).

Ground rules At some of the smaller sites, it will be necessary to limit the number of people present at any one time (Docks and floating homes must remain afloat!). Please be careful, respectful, and appreciative of the property and the hospitality of those who have opened their homes, boats, or workplaces to us. No photos or smoking without specific permission. Unless the host directs otherwise, we are asking that those on a home tour remove their shoes indoors.

Tickets are \$15, \$10 for seniors. Available on the day of tour at most of the tour sites and at the parking locations designated here, as well as at Julia's 14 Carrot Restaurant (2305 Eastlake Ave E), Terry Kelly's Chevron (2727 Eastlake Ave E) and outside Lake Union Mail (117 E Louisa)



Along the Way:

The Eastlake P-Patch and site of proposed Fairview Park (2900 Fairview Ave. E.) About half of Eastlake's residents live in apartments, and many others live on houseboats; most of these people lack a yard in which to play or garden. Yet Eastlake has one of the city's smallest acreages of parkland in relation to its population. Operated by the City P-Patch Gardening Program, the Eastlake P-Patch attracts gardeners from throughout the city, and has a long waiting list. The P-Patch and its idyllic surroundings are now threatened by a proposed building that would change forever this sleepy part of Fairview Ave. E., one of Seattle's last country roads. The City is considering establishing a park at this site. Letters on behalf of the park can be sent to Holly Miller, Superintendent of the Department of Parks and Recreation, 600 Fourth Ave., Seattle 98104. To help, contact the Olmsted-Fairview Park Commission, 3105A Fairview Ave. E. Seattle 98102, or call 328-4798. Donations are welcome and needed.

Arborway and threatened farm house (102 E. Louisa, roughly 2500 Yale Ave. E.). **NOTE:** not an official part of the tour; visits inside house or in yard not permitted. This historic farm house dates back to the days when Eastlake was covered with orchards and pastures. Its front door is on an unusual public arborway for walkers between Yale Ave. E. and Eastlake Ave. E. on the E. Louisa right-of-way, which because of surveying errors a century ago is too narrow to accommodate a roadway. Your contributions are needed to help save this building and the shelter its yard provides the arborway. Contributions can be sent to the Eastlake Community Land Trust, 117 E. Louisa #186, Seattle 98102. For questions, call 322-6042 or 325-6645.

Help Preserve Eastlake

Welcome! On this day we invite you into our homes and workplaces to taste the Eastlake way of life. Ours is a vital but precarious balance of homes, businesses, boats, parks, and public facilities. Noise, pollution, and hazards are all increasing with traffic and parking pressures. Development has been haphazard, not the result of any plan. Old structures that lend our neighborhood its character are threatened with demolition. Parks are inadequate for the growing demand. Eastlake has always been a diverse community, and it is fighting to remain so. Please join us in helping to preserve some of what makes this place so special. Subscribe to the Eastlake News, \$25 c/o the Eastlake Community Council, 117 E. Louisa #1, Seattle, WA 98102; donations may also be received at that address. Thank you for visiting our neighborhood. And do come again!

Chris Leman,
ECC President


P.S. Thanks to our many volunteers, hosts and ticket outlets and to Quick Stop Deli and Pete's Super for donated items for hospitality house.

Opening April 22nd



RESIDENCE INN BY MARRIOTT
SEATTLE - DOWNTOWN - LAKE UNION
800 FAIRVIEW NORTH
(206)624-6000

When clients come to town. Recommend they stay in the neighborhood.



Limited Delivery Area



Hours 5 - 11 Every Day
DELIVERY ■ 329-6558

Detach Here

IN PIZZA WE TRUST

Introducing PAZZO'S

PAZZO \$2 BUCK

GOOD OFF ANY REGULAR MENU ENTREE LUNCH or DINNER
one per person per visit
2307 Eastlake Ave E

11:30 am - 2 am

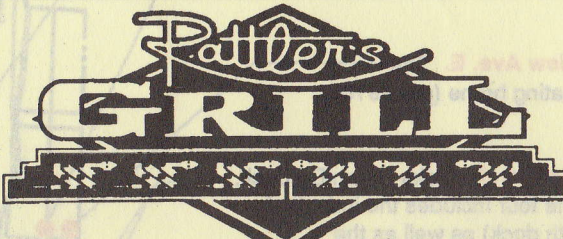
329-6558

ROANOKE



Breakfast • Lunch
Dinner • Sunday Brunch

2366 Eastlake East - Seattle 328-2775



1823 EASTLAKE AVE. EAST, SEATTLE, WA 98012
325-7350
Santa Fe Style Mexican Food



AZTECA
MEXICAN RESTAURANT

Muchas Gracias!

2501 Fairview Ave E. Seattle (on Lake Union) 324-4941
Open 7 days a week
Sun-Thr 11am - 11:30pm
Fri-Sat 11am - 12:30pm
Sundays are "Little Amigo Day" (under 13 -- only 95¢)