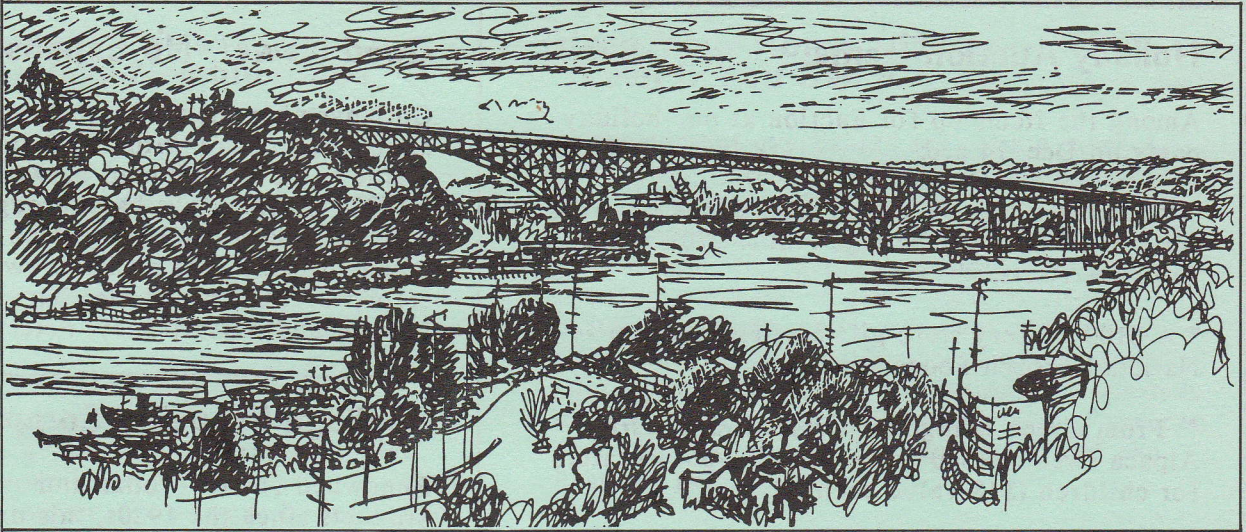


FREE-Take One

Eastlake  
Community  
Council

117 E. Louisa St.  
Box #1  
Seattle, WA 98102



## **EASTLAKE NEWS**

# Holiday Merriment

Join us on Thursday, Dec. 14, at 6pm for our celebration of the holiday season: Our fifth annual Eastlake party and auction to be held at 2717 Boylston E. Once again local businesses have made generous donations for the auction--see page 2 for the auction items received by presstime. The ECC will provide the beverages for the evening. Food will take the form of a potluck, and we ask you to bring a small appetizer or dessert. Take this opportunity to share the holiday cheer!

### **Calendar of Upcoming Events**

Dec. 7 (Thurs.), Final City Council hearing on new multi-family zoning controls, Council Chambers, 11th floor, Municipal Building, 4th Ave., 7pm.

Dec. 11 (Mon.), Olmsted-Fairview Park Commission meeting, 2847 Franklin E., 7pm.

Dec. 12 (Tues.), Land Use/Neighborhood Planning Committee meeting, 7pm, probably at NOAA meeting room. Call 324-1716 for details.

Dec. 14 (Thurs.), ECC Holiday Party and Auction, 2717 Boylston E., 6pm.

Jan. 9 (Tues.), Community meeting on the proposed widening of Lynn St., with Seattle Engineering Dept. representatives. Seward/Colman School Library, 7pm.

Jan. 23 (Tues.), ECC General Meeting, Seward/Colman School Library, 7pm.

**DECEMBER 1989**

Eastlake News is distributed free to residents of the Eastlake Community and Members of the Council

Newsletter Editor:  
Martin Cobb

## Holiday Auction Items

Among the items up for auction at our holiday party on Dec. 14 are:

- \* Round trip, dinner and Indian dance program for two at Tillicum Village (value \$70), from Tillicum Tours.
- \* A \$100 grocery store gift certificate from National Frozen Foods Inc.
- \* From Green Mango Imports: An adult-size Alpaca sweater (\$60 value) and 2 wool sweaters for children (\$18 value each).
- \* A boat haul-out and inspection by American Marine Contractors (value up to \$175).
- \* A set of 4 glass Christmas tree ornaments from I&I Glass Designers.
- \* 2 certificates from Casa Lupita (\$40 each).
- \* Wheel alignment and tire balance from Scott Sherman's Automotive (\$60 value).
- \* From the Museum of History and Industry and its director James R. Warren: A 1-year family membership in the museum (value \$35) and Warren's book *The Day Seattle Burned* (\$12.95).
- \* Pet sitting by the Critter Sitter.
- \* From Julia's, dinner for two (up to \$30 value).
- \* \$100 worth of mechanical labor on a foreign auto or an aluminum cylinder head, from Keith Magnuson's Ralli-Round.
- \* A blue queensize duck feather and down comforter (\$80 value), donated by PEMCO.
- \* Gift certificates to Egghead Software, donated by Walker, Richer and Quinn.
- \* A brown leather travel bag (\$100 value) and leather fanny packs, donated by The Baker Co.
- \* A \$20 gift certificate from the Red Robin.
- \* A EE U.S. Savings Bond (current value \$50) from SeaFirst Bank.
- \* 200 mixed daffodil and narcissus bulbs (\$64 value), donated by Thomas Berger Associates.
- \* 4 certificates for Sunday brunch from the Lake Union Cafe (each valued at \$15.95).

## Good News! No Expansion of I-5

On November 21, the state Transportation Dept. announced it had withdrawn its proposal to add a lane to I-5 northbound between Olive Way and SR520--which would have brought more pollution, noise, and congestion to our neighborhood. The decision owes much to the efforts of ECC board members--especially Chris Leman--and our attorney, Peter Eglick.

## Coolidge Propeller Company, R.I.P.

Renowned for its bronze and stainless steel products since the 1920s, this distinguished Eastlake business is closing down as its owners move operations to Alabama. We wish all the best to the company and its employees; we will miss you. The company has donated a large propeller to the ECC for a streetside monument. If you would like to help make this monument a reality, call Chris Leman at 322-5463.

## Jan. 9 Meeting on Lynn St. Widening

With the community concerns voiced at our September general meeting in mind, representatives from the Seattle Engineering Dept. will hold another meeting Jan. 9 to share information on the proposed widening of Lynn Street between Boylston and Eastlake. Seward/Colman School Library, 7pm.

## Olmsted-Fairview Park Commission

The Commission has developed a schedule of fundraising events to contribute to public purchase of a park at 2900 Fairview. The first event will be a cruise. For information on tickets, call Marietta Foubert (632-7504) or Kim Lokan (324-1158). To get involved in the Commission's activities, contact Linda Nelson at 329-6067. The next Commission meeting will be Monday, Dec. 11, 7 p.m. at 2847 Franklin E.

## BIBELOTS & BOOKS

*Rare and Used  
Illustrated Books  
Children's Books  
Mysteries & Classics*

*American Pottery:  
Fiesta, Harlequin  
Roseville, Weller  
Rookwood Etc.*

112 East Lynn St., Seattle, WA 98102  
12-5:30 Tues.-Sat. & By Appointment  
329-6676

## New Development Crisis Threatens Eastlake Neighborhood

The Eastlake neighborhood is being inundated by a wave of proposals for new development, the most extensive we have seen over the past couple of years. The planned developments are especially intense in the north and south ends of the neighborhood, precipitated in large part by growth in the south Lake Union area.

Neither the north or south end has a well defined land-use character or established architectural features, but both present golden opportunities for well designed new development. However, the current hodge-podge of proposals, if approved, could forever prevent Eastlake from achieving cohesive development with strong neighborhood characteristics for these areas. Without comprehensive review of the proposals, Eastlake will continue to see parking and traffic problems escalate unchecked, and the neighborhood's character changed for the worse.

The ECC and Roanoke Park/Portage Bay Community Councils have already met to initiate a plan to address the many development applications that will be submitted to the City in the near future. We have consulted with our attorney, Peter Eglick, and have requested a meeting with Dennis McLerran, Director of the City's Department of Construction and Land Use, to get commitments regarding DCLU's review of the proposals. The ECC and Roanoke Park agree that neighborhood planning now is essential if we are to avoid piecemeal review and development of these vital areas.

Plan to attend the 7pm December 12 meeting, probably at the NOAA conference room, to help plan Eastlake's, and your own, future. Call 322-4041 or 324-1716 for more information.

## Keep Your Home a Home-- Even If You Sell It

In the current overheated real estate market, many people who own single-family homes or small apartment buildings are receiving inquiries from speculators who want to assemble several lots, with plans to demolish the current structures and put in bulky new multi-lot buildings. While waiting for nearby purchase opportunities, they will lease, rent, or vacate your homes, allowing the buildings and gardens to deteriorate. There are several things you can do to prevent this gradual destruction of the Eastlake neighborhood.

*\* Make full use of available help to work on your home.* Elderly and handicapped people often sell their homes even when help is available for them to stay there. The Mayor's Office for Senior Citizens (684-0500) can help you find reliable maintenance people and even pay them; it can also help you reduce the costs of utilities. There's also the Meals on Wheels program (448-3110). The County Assessor's office (296-3920) can help low-income elderly reduce their property taxes through an exemption.

*\* Don't sell your house without putting it on the open market.* Deal with a reputable realtor who understands your wishes, not with someone whose business it is to buy up houses and replace them with bigger structures. Eastlake is increasingly popular for families with children, who would love to buy your house if they knew it was available. Some houses are even more valuable as single-family residences than as construction sites. Note also that some houses can be easily and sensitively converted to duplexes or triplexes to provide additional income for the live-in owner.

*\* Look for a buyer who will appreciate your house as much as you do.* You have a right to know who is buying your house and what they plan to do with it. If a friend or family member is helping you sell the house, make it clear to them that you want the house to remain.

*\* Take legal steps to preserve your home.* You can have an attorney include a covenant in the deed restricting the lot to single-family residential purposes only, or to preclude expansion of the existing structure. It is also possible to sell or will your home to a non-profit, preservation-oriented organization that would promise not to remove it.

State Contr. Lic. #DANDYCC123DC



Dandy Custom Craftsmen Inc.  
258 East Edgar Street Seattle, Washington  
323-6973

Renovation & Remodeling Experts  
Call us! We're in the Neighborhood



## Eastlake Thank Yous

It's time again for the pleasant task of thanking all those who've helped keep the Eastlake Community Council thriving this past year.

Chris Leman has been an energetic and effective ECC president, giving up enormous amounts of free time on many issues affecting Eastlake and neighboring communities. Vice-president Lynn Poser has taken on a large number of responsibilities and can always be relied upon to come through. We're indebted to both of them.

Carol Eychaner continues to be a mainstay of the ECC, especially on land-use projects and with her work on broader city-wide neighborhood issues; she spearheaded the successful effort to secure funding for the new Hamlin street-end park; and she has been an efficient treasurer this past year.

Mark Blatter has shouldered the central responsibility for the land-use projects ever increasing in Eastlake, and has done a great job with these unglamorous and time-consuming activities.

Martin Cobb has continued to edit and produce the *Eastlake News*, still one of the better community newsletters in the city.

Jules James has had to cut back on his ECC activities due to the time required for Lake Union Mail and his articles for *The Lake Union Review*, but still found time for coordinating our neighborhood survey and other activities.

Janet Lapeyrouse has proved an important addition to the ECC board in a number of capacities. Other "new faces" who have already proved valuable are Eleanor Boba, Carolyn Bonamy, Mary Kay Gillespie, Anna Kenney, Stan Orłowski, Robert Rudine, and Janet Yoder.

Thanks also to board members Dick Arnold and Clarice Coker, and to past board members Susan Boyle, Lisa Farin, Anne Fisher, and Lynn Howell, for helping out with various activities.

Thanks to all our newsletter distributors: Most of the above-mentioned, plus James Bishop, Fred Farin, Debbie and P.A. Gillespie, G. Howard Harris, Shel Izen, Sally Paulsen, Eileen Ramerman, and Mike Sullivan.

Special thanks to our attorney Peter Eglick, the best lawyer in town and very generous with his pro bono time.

Julia Miller and the staff at Julia's 14 Carrot Cafe generously donated the profits from an evening at the restaurant to benefit the ECC. Thanks also to the artists who participated in the group show at Julia's: Ron Adams, Karen Berry, Dale Chihuly, Cooper Edens Drager, Christopher Knight, Michael Renz, Robert Rudine, and Robert Sperry. A special thank you to Josephine Utley for presenting a Windsor Utley painting, from her private collection, for inclusion in the show.

Wayne and Jim Ross provided us with a lovely afternoon's cruise on Lake Union and Lake Washington on the *Golden Dolphin*.

The Hamlin Shores residents and Bill Keasler helped with the proposal for the new Hamlin street-end park.

Thanks to the Roanoke Exit for donating a cake to the Seward School Open House, and to NOAA for use of their meeting space.

Belated thanks to Rosamund Larsen for providing us with important information on Eastlake real-estate trends and history, and to Jeff Gervin at Thomas Berger Associates, for his assistance in reviewing landscape plans.

And thanks to our advertisers...our auction donors...our raffle donors...those who gave presentations at our general meetings...special thanks to G&H Printing for printing our newsletters...to Community Service Center manager Carla Main for her support and interest...to all those we've unintentionally left out...and thanks again to everyone.

---

**The Eyeworks**  
FASHION OPTICS  
Designer Eyewear for All Occasions

- PRESCRIPTIONS FILLED PROMPTLY
- LENSES DUPLICATED
- CUSTOM TINTING & FITTING

INSURANCE PLANS WELCOME  
700 Broadway East  
Capital Hill

**328.4386**

## Air Assault Looms

The Federal Aviation Administration wants to change flight patterns north of Sea-Tac airport, beginning Feb. 1. The proposed rerouting moves 40 percent of Sea-Tac's flights from over Puget Sound and Elliott Bay to overland during clear weather. Eastlake and adjacent neighborhoods will bear a major burden of the increased noise, as above us will fly both the incoming routes from back East (flying south over Interstate 5 after turning in Northeast Seattle); and those from the Southwest except California (flying west over State Route 520 and then turning south over Interstate 5).

The arrivals alone will total 120 jets a day and 65 commuter planes a day, with future increases likely. Taking off, an estimated 6 to 12 jets and 30 commuter planes will fly over Eastlake, and many more will fly near us as they head east between the two floating bridges.

These changes were adopted without any environmental analysis, and in defiance of ongoing negotiations between Sea-Tac and Seattle neighborhood groups. They suspend the current Noise Abatement Procedures, under which plane traffic is routed over Elliott Bay and Lake Washington. Our congressional delegation is pressing to prevent or moderate the changes. To assist them in their efforts, you can write to Reps. Jim McDermott and John Miller, House Office Building, Wash., D.C. 20515; and to Sens. Slade Gorton and Brock Adams, U.S. Senate, Wash., D.C. 20510. Local phones are McDermott, 442-7170; Miller, 672-4224; Adams, 442-5545; and Gorton, 442-0350.

## Pet Sitting Service

From the Critter Sitter. Gift certificates now available. Call Jean Slocum, 324-3173.

## Seniors Healthcare Survey

Thanks to all the Eastlake seniors who recently participated in the Eastlake Senior Healthcare Study. So far we've heard from more than 50 respondents, 80% of whom are 71 or older, and 75% of whom have lived in the neighborhood at least 16 years. Here are the results:

*Health.* 90% of respondents consider their health fair to excellent. 87.5% do some form of regular exercise; walking is the most frequent form, and 79% walk more than 3 days a week.

*Social.* 87.5% of respondents feel hopeful about the future, and 85% plan to remain living in Eastlake. 20% currently participate in a senior center; 90% responded "yes" or "maybe" to the suggestion of a community center in Eastlake.

52.5% are not aware of the support systems available to help continue independent living. 17.5% described themselves as "lonely"; and most of these respondents are in poor health or have difficulty with the activities of daily living. More happily, 82.5% of all respondents consider their financial status adequate or better.

If we missed you in this survey, let us know -- more studies are planned. Also, if you'd like to participate in a community health/social committee, we're in the process of forming one. In both cases, call Carolyn Bonamy at 323-5810.



## Membership Application

YES!!! I want to help take care of Eastlake. My dues are enclosed for membership in the Eastlake Community Council (1 year membership).

This is a  NEW  RENEWAL Membership.

NAME \_\_\_\_\_ PHONE \_\_\_\_\_

ADDRESS \_\_\_\_\_

- DUES:  Household (\$15)  
 Sr. Citizen (\$10)  
 Business (\$40)

Mail to: ECC Membership  
117 E. Louisa St., Box #1  
Seattle, Washington 98102

Make check or money order payable to:  
Eastlake Community Council

## Neighborhood Notes

**Land Use Votes.** Eastlake voters gave some of the city's highest margins to two recent initiatives that had been endorsed by the Eastlake Community Council: The Citizens Alternative Plan (CAP) to control downtown growth; and the Open Space Bond Issue to save parkland throughout the county. The passage of these initiatives is some compensation for the discouraging defeat last month of the "slow growth" neighborhood candidates for City Council. The new Council will likely roll back the gains that recently have been made by Seattle's neighborhoods. Watch for the Council votes on the new multi-family zoning as the first indication of things to come.

**Eastlake Land Trust.** Now in the process of formation, this organization will acquire lands and structures in the Eastlake neighborhood to preserve affordable housing, needed services (e.g. a laundromat), and open spaces. To donate time or money to this effort, call 325-6645.

**Eastlake welcomes transplant candidates and their families.** Recently opened at 2727 Franklin is Dewitt House, which will house people who are waiting for a lung or heart transplant at the UW Medical Center. We are proud that Eastlake is able to shelter these folks and their families from around the country during this hopeful but trying period in their lives. As most of these guests are from out of town, they would welcome invitations to dinner and other acts of hospitality. To find out what you can do, contact Sandi Kruse at UWMC, 543-8065.

**Spare a Tree.** To have your name removed from various mail lists, call Direct Marketing of Puget Sound, 251-9136.

**Lake Union Oil Spills.** To report a spill, call the 24-hour number of the state Ecology Dept., 1-800-262-5990, or locally, 867-7000.

**Raffle Winners.** The drawing for the ECC art raffle was held Oct. 17. The prizes went to current and past Eastlake-area residents. Lori Christopher won Dale Chihuly's lithograph; Phyllis Boyker won Ron Adams' photographic panorama; and Clarice Coker won Beth Means' patchwork quilt. Many thanks to the donors to the raffle and to all who bought tickets in support of the ECC.

## More Eastlake Survey Results

You'll remember that in September, in the *Eastlake News* and *The Lake Union Review*, some of most interesting results of our 1989 Eastlake Neighborhood Survey were published. Here are some more of the findings, gleaned from the final tabulations of the survey's organizer Jules James.

228 Eastlakers responded to the survey. The oldest was 85 and the youngest 18; average age was 43, with 54% from the 30 to 50 age group. 22% are native Seattleites and another 24% from elsewhere in the Pacific Northwest. Surprisingly (Emmett Watson take note!), only 5% are from California.

58% of the respondents own the place they live in Eastlake, with renters the remaining 42%. As expected, most condo owners and renters have lived just a few years in Eastlake; houseboat owners have generally more longevity; while half the house owners have lived here at least 16 years (though only 20% of the respondents are house owners--a sign of the times for Eastlake).

67% of Eastlakers who work outside the home travel to work by car, as opposed to by bus (23%), bike or carpool (3% each), or on foot (4%). These patterns have to change if we're going to solve our region's ever-worsening traffic, parking, and air pollution problems!

On the plus side, Eastlakers are avid recyclers--86% of us. The newspaper we read most before recycling is the *Seattle Times* (74% as opposed to 41% P-I readers); 79% are regular readers of the *Eastlake News* and 72% *The Lake Union Review*; 28% regularly read *The Weekly*, 13% *The Wall Street Journal* and only 6% *USA Today*.

Look for more results in future newsletters.

## BEAUTYWORKS

Styling for Men and Women

**1/2 off**

Introductory style/cut

2701 Eastlake East, Seattle, WA 98102

329-9007