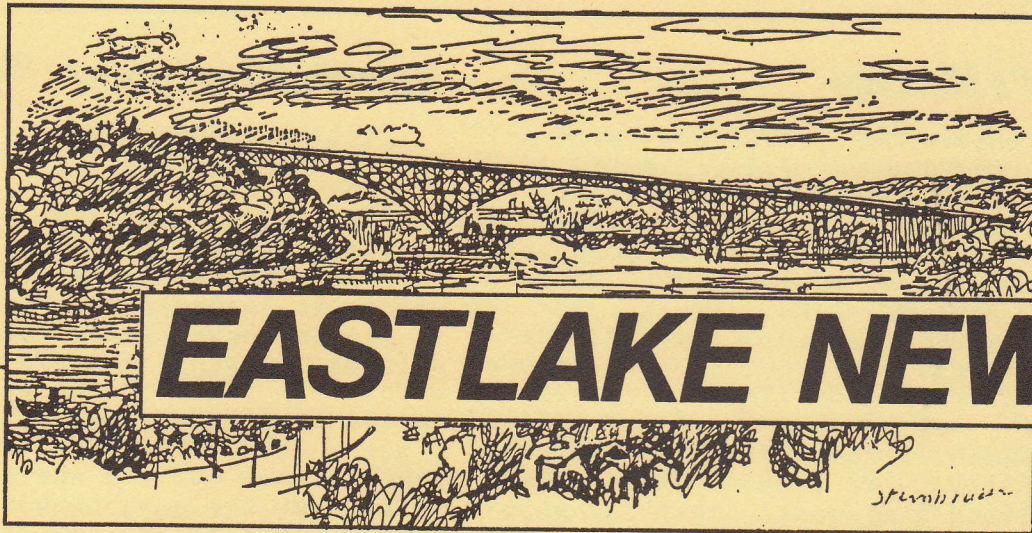


November 1986



# EASTLAKE NEWS

## November General Meeting November 18



The ECC November general meeting will be held in the meeting room of the Hungry Turtle Restaurant (located at the foot of Roanoke St. on Lake Union) on tuesday, November 18th at 7 PM. All are welcome to attend.

David Zeigen, Executive Director of the Seattle Mental Health Institute, will be discussing the semi-independent living house program which places clients in "normal" residential settings in the city.

ALSO: We are attempting to line up a representative from City Light to discuss the various weatherization programs offered by City Light to tenants, landlords and home owners.

## \*Holiday Merriment

Eastlakers: Come one, come all to our 2nd annual celebration of holiday merriment in lieu of the December meeting. More details of this spectacular event at our November 18th meeting. Every Eastlaker is invited to come and enjoy the holiday spirit.



### OFFICERS

Jules James	329-5945
President	
Clarice Coker	325-3845
Secretary	
Fred McCulloch	329-7729
Treasurer	

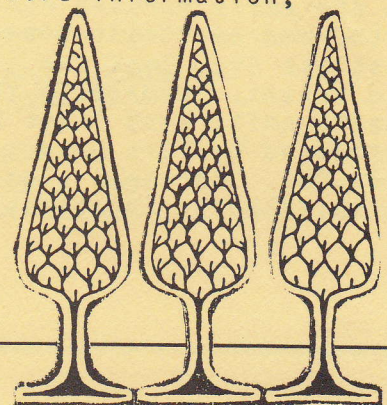
## Eastlake Business Association

The Eastlake Business Association is presently raising money toward the purchase of trees for the Eastlake Street Tree Planting Program. The initial "Greening of Eastlake" is planned for the "core" of the business district (on Eastlake between Boston to the south and Roanoke to the north).

Two types of trees have been specified for the Eastlake Neighborhood: one is a type of maple, globe shaped at maturity and the other is a more narrow growing Hornbeam for locations where there is not room for tree limb spread. Forty trees are proposed for the "core". The estimated cost is approximately \$50.00 per tree.

Businesses and individuals are invited to contribute toward this project. Contributions should be received by November 30th to allow time for delivery and planting of trees scheduled between December and January.

Tax-deductible contributions for the tree planting program maybe made payable to the "Eastlake Tree Fund" account. Please contact Diane Symms c/o Roanoke Restaurant for more information, 328-2775.



## **President's Message**

Two white board comment periods ended recently. Eastlake residents had no letters on file. Nothing supporting, nothing opposing. One project was the demolition of our three mobile homes and the construction of an eight unit condo project at 2501 Eastlake. The second project involved the demolition of four duplexes and the construction of a two story retail complex at 2048 Fairview.

We need comment letters from residents in the DCLU files. The letters don't need to be profound statements, just say what you feel. We need to have comment letters on file. DCLU equates the number of letters with neighborhood sentiment.

The ECC is well-respected in land-use situations. But the lack of comment letters has created a difficult situation. Perhaps we feel too overwhelmed after nearly 40 white boards in two years. Or perhaps we assume past action and success translates into future success without action. Comment letters helped Loni Talbot's and Frank Chesley's campaign against the proposed billboard at 2707 Eastlake.

If you want us to fight, please give us the weapons.

## **Membership News**

New and renewal memberships for the months of September and October include Kathleen Shea, William Burke, H. Martin & Mary Rasmussen, Gail Simon, Toosse Maaskant, Catherine Wilkie, John & Carol Hilton, Combined Equities Corp./John Peranzi, R. Travis Wilson, Susan Page, Janis Loesche, Carlisle King, Lois Hobart, Lucile Geibel, Stanley Andreason, Beulah Empson/Vivian Miller, and Janis Oakes. Thank you for your support.

## **Local Fire**

In the early morning hours of September 27th, an apartment house fire at 1917 Eastlake Ave. took the life of a 24 year old tenant. Damage to the two story, twenty unit, wood frame building was estimated by Fire Dept. Officials at \$130,000. Careless cigarette smoking was established as the cause of the fire.

## **Neighborhood Notes**

### **THE TRAFFIC CIRCLES**

As promised at the October general meeting, we've done a little research into the review procedure for the traffic circle at Franklin and Hamlin. Sometime in early 1987, the Engineering Dept. will mail survey cards to all residents within one block of the circle and follow-up traffic counts will be taken.

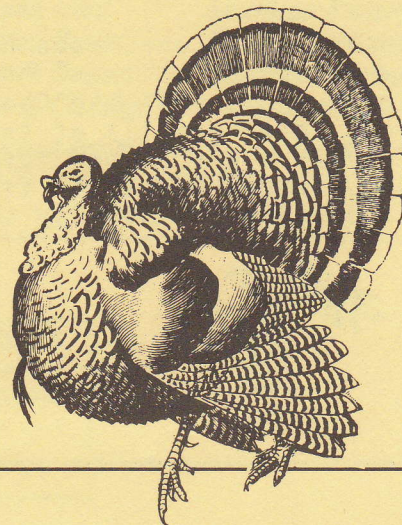
You may have noticed the traffic counters throughout the neighborhood. More traffic circles and similar "traffic diverters" are now being considered by the City at this very moment. To assist the City in their evaluations of the traffic and parking in our neighborhood, the ECC is actively soliciting letters--particularly those letters which address a specific intersection or residential block.

### **AUCTION ITEMS NEEDED**

The ECC is actively looking for donations of auction items for our annual holiday event. A great way for Eastlake businesses to get some free publicity in the newsletter as well as at our traditionally well-attended event. Businesses and individuals are welcome to contribute. Contact Clarice Coker at 325-3845.

### **THE HISTORY OF EASTLAKE CONTINUES....,**

Any persons interested in doing independent history research on Eastlake, or in interviewing Eastlake residents for historical research are welcome to contact Anne Fisher for resource information. She can be reached at 328-1400 during the daytime.



# Land Use Update

2702 Eastlake (Billboard. MUP #8601668) DCLU issued a decision on October 30th after receiving 18 comment letters and a petition with 86 signatures in opposition to the proposal. DCLU has conditioned the billboard down from 44 feet to 25 feet above grade. The appeal deadline is November 14th. The coordinators are Frank Chesley and Loni Talbot.

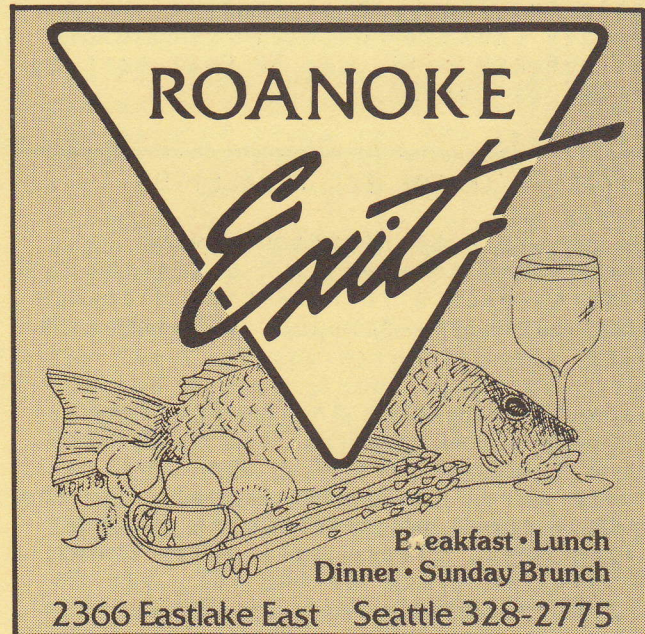
2207 Boylston (3 story, six unit dwelling over parking level. MUP #8605977). A new white board. The comment period has not been established.

3100 Eastlake + 3101 Fairview (4 story office building and 2 story office building, 148 total parking spaces. MUP #8504827 + #8504916) DCLU decision issued, appeal deadline November 17th. Beth Means, coordinator.

2210 Fairview (4 unit condo. MUP #850672) The DCLU decision was appealed by Eastlake resident Greg Blount in September. Mr. Blount's appeal hearing was set for mid-October, but then cancelled when it was discovered that the wrong appeal deadline had been printed on the DCLU decision. Mr. Blount and nine Eastlakers were prepared to testify however, they were informed of the cancellation upon arriving at the Hearing Examiner's Office! Mr. Blount has now filed suit in Superior Court.

2048 Fairview (32 unit condo. MUP #8602921). The appeal of the Floating Homes Association and the ECC was heard October 13th, the ruling was issued October 28th. The Hearing Examiner ruling is now being reviewed for possible appeal to the City Council. Jules James and Rob Widmeyer, coordinators.

2240 Eastlake. The Southland Corporation (7-11 Stores) has applied for a Class E + F liquor license (wine and beer carryout). Petitions opposing the issuance of this license are available for signing at the Lynn Street Deli Mart, The Eastlake Deli, Nick and Sully's, The Quick Stop Deli and Pete's Market. Comment letters-- for or against-- can be mailed to the Washington State Liquor Control Board, Olympia 98504. The comment period ends approximately November 21st. Larry Thurman at Quick Stop and Pam Arnhold at Lynn Street Deli, coordinators.



YES!!! I want to help take care of Eastlake. My dues are enclosed for membership in the Eastlake Community Council (1 year membership). This is a  NEW  RENEWAL Membership.

NAME \_\_\_\_\_ ADDRESS \_\_\_\_\_

PHONE (day) \_\_\_\_\_ (eve) \_\_\_\_\_

DUES: Household (\$10.00) \_\_\_\_\_

Sr. Citizen (\$5.00) \_\_\_\_\_

Business (\$35.00) \_\_\_\_\_

TOTAL ENCLOSED \_\_\_\_\_

Make check or money order payable to:  
Eastlake Community Council

Mail to: E.C.C./ Fred Farin  
2210 Franklin E. #401  
Seattle, WA 98102

## Fundraising Update

Fundraising for the Eastlake Community Council Legal Defense Fund has been quite encouraging. Since September, more than 34 households and businesses have contributed over \$1,200.

We would like to thank the following individuals and others who have contributed to the fund: R. Presler, H. & S. Schneider, Berrisford/Moll, J.C. Chambers, S. Dunwoody, D. Goodman, H. & A. Hoppe, J. Johnson, H. Kaylor, J. Kelly, C.W. Korbonits, S. McIntyre, M. Needham, N. Reyburn, M. Steinbrueck, E. Studley, G. Suyama, L. Geibel, and C. Wilke.

Contributions are still needed. Please make your Tax-deductible contributions payable to; The Central Seattle Community Council Federation, Eastlake Legal Defense Fund, c/o 58 East Boston, Seattle, WA 98102.

---

### ADVERTISING IN THE ECC NEWSLETTER

It is possible to distribute your business card to over 3,00 potential customers--each within walking distance of your business--for just 1/2 cents per reader!

The advertising rate in The Eastlake News for a horizontal 2" X 3 3/8" ad (just a little trim off a standard business card) is \$15 an issue. For the full fact sheet on advertising in The Eastlake News, please call Jules James (329-5945) or write to the ECC, c/o 58 East Boston, 98102.

## BEAUTYWORKS

For Men and Women

HAIRCUTS, PERMS, HIGHLIGHTING,  
TINTS, SHAMPOO SETS.  
TUE-SAT. 329-9007

STEVE FRODSHAM SUSAN TYERMAN  
STYLEST

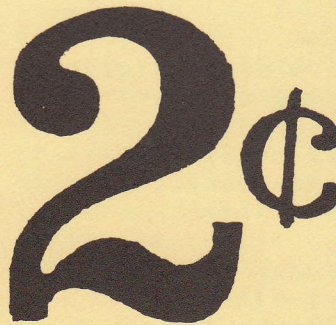
2701 Eastlake East  
Seattle, WA 98102

The Corner For Fine Printing



**G&H PRINTING**

**329-9888** Kevin Upton



8 1/2 x 11-20# white bond  
Kodak & Xerox  
**COPIES 2¢ EACH**  
with this ad  
from auto-feed originals  
ad must be presented  
when order is placed  
offer expires 12-31-86  
EASTLAKE STORE ONLY  
**COPY MART**  
2920 EASTLAKE EAST

*You Don't Have To Leave Your  
Neighborhood For Quality  
Typesetting*

## Call TYPEHOUSE

1100 Digital Typefaces  
5000 Display Typefaces  
Disk Conversion • Paste-up • Camera  
**1329 ALOHA 623-5128**

## BIBELIOTS & BOOKS

*Rare and Used  
Illustrated Books  
Children's Books  
Mysteries & Classics*

*American Pottery:  
Fiesta, Harlequin  
Roseville, Weller  
Rookwood Etc.*

112 East Lynn St., Seattle, WA 98102  
12-5:30 Tues.-Sat. & By Appointment  
329-6676

Eastlake News is published 12 times a year by the Eastlake Community Council. It is distributed free to residents of the Eastlake community and business members of the Council.

Newsletter Editor - Lisa Farin  
2210 Franklin E. 325-3069